

WAAS CH <b>77933</b> <b>W36A</b>	APP CRS <b>358°</b>	Rwy Idg <b>8623</b> TDZE <b>497</b> Apt Elev <b>508</b>
--	------------------------	---

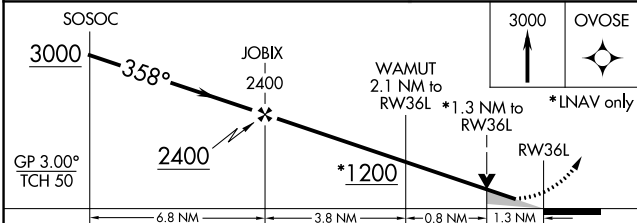
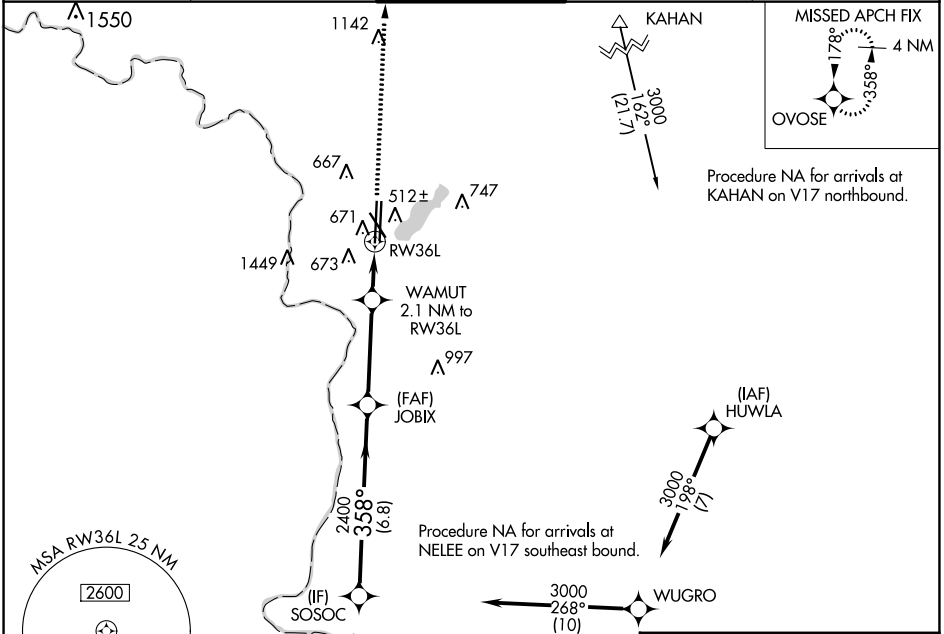
# RNAV (GPS) RWY 36L

LAREDO INTL (L.R.D)

**▽** For uncompensated Baro-VNAV systems, LNAV/VNAV NA below 1°C (34°F) or above 54°C (130°F). Circling NA west of Rwy 14 and 36L. DME/DME RNP-0.3 NA.

**▲** MISSED APPROACH: Climb to 3000 direct OVOSE and hold.

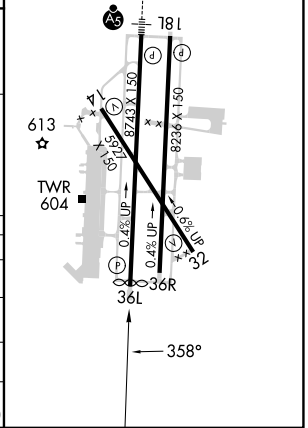
ATIS <b>125.775</b>	HOUSTON CENTER <b>127.8 307.2</b>	LAREDO TOWER ★ <b>120.1(CTAF) 0 257.9</b>	GND CON <b>121.8</b>	UNICOM <b>122.95</b>
------------------------	--------------------------------------	--	-------------------------	-------------------------



CATEGORY	A	B	C	D	E
LPV DA	697- <sup>3</sup> / <sub>4</sub>		200 (200- <sup>3</sup> / <sub>4</sub> )		
LNAV/VNAV DA	844-1		347 (400-1)		
LNAV MDA	940-1 443 (500-1)		940-1 <sup>3</sup> / <sub>8</sub> 443 (500-1 <sup>3</sup> / <sub>8</sub> )		
<b>C</b> CIRCLING	940-1 432 (500-1)	980-1 472 (500-1)	1100-1 <sup>1</sup> / <sub>2</sub> 592 (600-1 <sup>1</sup> / <sub>2</sub> )	1200-2 <sup>1</sup> / <sub>4</sub> 692 (700-2 <sup>1</sup> / <sub>4</sub> )	1200-2 <sup>1</sup> / <sub>2</sub> 692 (700-2 <sup>1</sup> / <sub>2</sub> )

ELEV 508	<b>D</b> TDZE 497
----------	-------------------

MIRL Rwy 14-32  
HIRL Rwy 18R-36L and 18L-38R



SC-3, 31 OCT 2024 to 28 NOV 2024

SC-3, 31 OCT 2024 to 28 NOV 2024