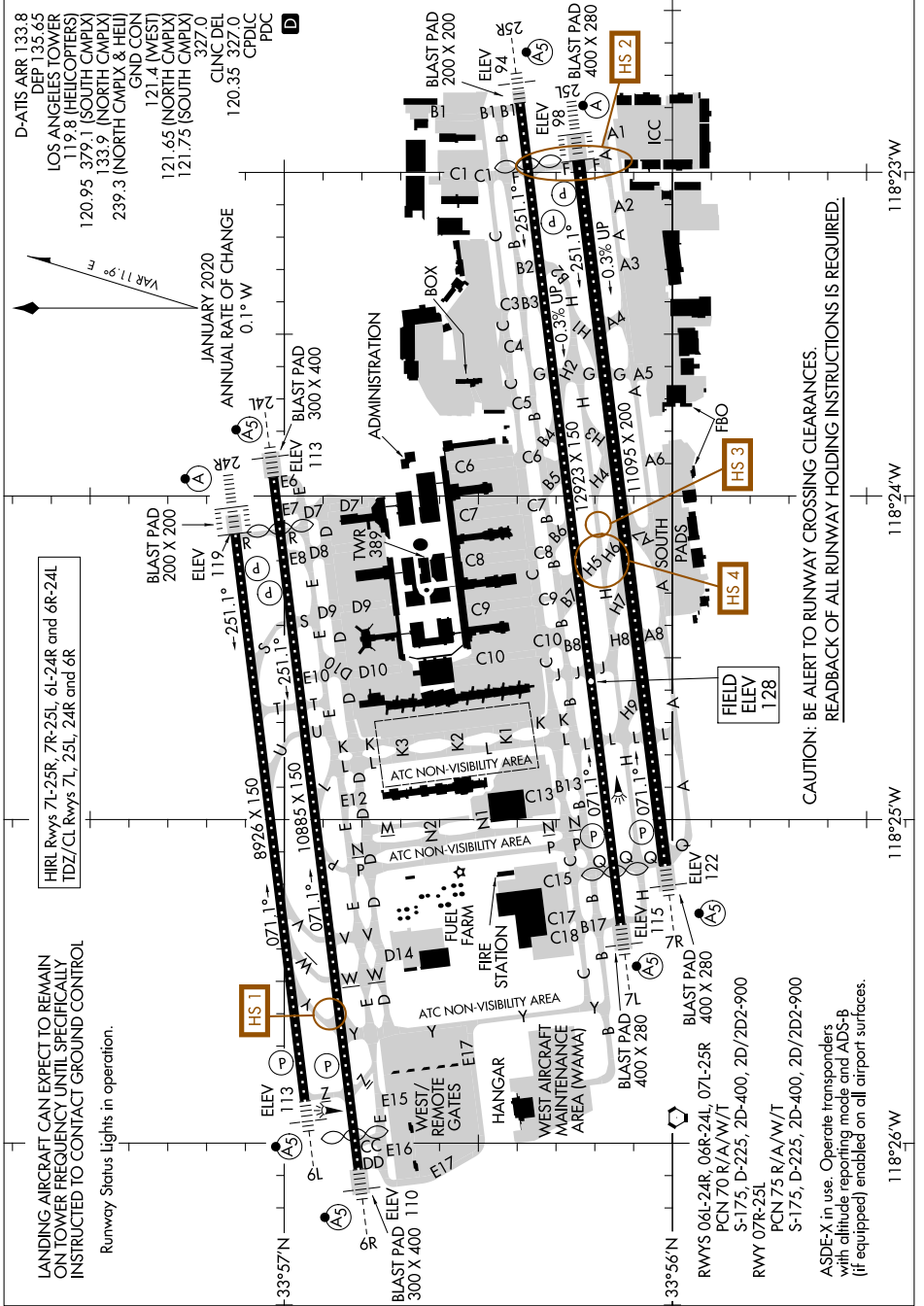


# AIRPORT DIAGRAM

AL-237 (FAA)

LOS ANGELES INTL (LAX)  
LOS ANGELES, CALIFORNIA

SW-3, 31 OCT 2024 to 28 NOV 2024



D-ATIS ARR 133.8  
 DEP 133.65  
 LOS ANGELES TOWER  
 119.8 (HELICOPTERS)  
 120.95 (SOUTH CMPLX)  
 133.9 (NORTH CMPLX)  
 239.3 (NORTH CMPLX & HELI)  
 GND CON  
 121.4 (WEST)  
 121.65 (NORTH CMPLX)  
 121.75 (SOUTH CMPLX)  
 327.0  
 CLNC DEL  
 120.35 327.0  
 CPDLC  
 PDC  
**D**

HRL Rwy 7L-25R, 7R-25L, 6L-24R and 6R-24L  
 TDZ/CL Rwy 7L, 25L, 24R and 6R

LANDING AIRCRAFT CAN EXPECT TO REMAIN  
 ON TOWER FREQUENCY UNTIL SPECIFICALLY  
 INSTRUCTED TO CONTACT GROUND CONTROL  
 Runway Status Lights in operation.

CAUTION: BE ALERT TO RUNWAY CROSSING CLEARANCES.  
 READBACK OF ALL RUNWAY HOLDING INSTRUCTIONS IS REQUIRED.

RWYS 06L-24R, 06R-24L, 07L-25R, 400 X 280  
 PCN 70 R/A/W/T  
 S-175, D-225, 2D-400, 2D/2D2-900  
 RWY 07R-25L  
 PCN 75 R/A/W/T  
 S-175, D-225, 2D-400, 2D/2D2-900

ASDE-X in use. Operate transponders  
 with altitude reporting mode and ADS-B  
 (if equipped) enabled on all airport surfaces.

SW-3, 31 OCT 2024 to 28 NOV 2024