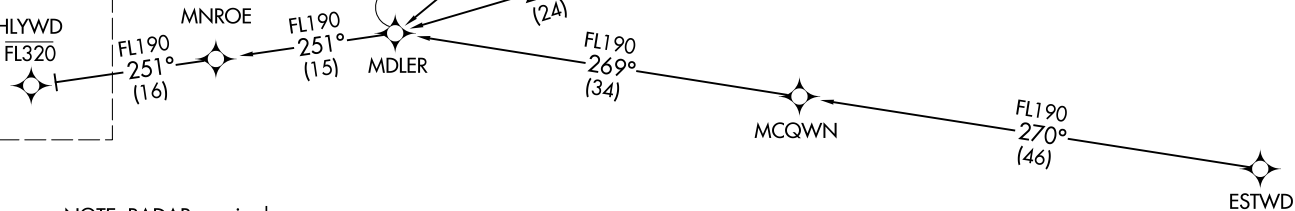


HLYWD ONE ARRIVAL (RNAV) Transition Routes  
(HLYWD.HLYWD1) 02MAR17

SOCAL APP CON  
124.05 353.775  
D-ATIS ARR  
133.8  
LOS ANGELES TOWER  
(N) 133.9 239.3  
(S) 120.95 379.1



See following page for arrival route.  
HLYWD  
FL320



- NOTE: RADAR required.
- NOTE: RNAV 1.
- NOTE: DME/DME/IRU or GPS required.
- NOTE: Turbojet aircraft only.
- NOTE: Los Angeles landing west traffic.
- NOTE: Expect runway 25L unless otherwise assigned by ATC.
- NOTE: Expect local area altimeter reaching FL230.
- NOTE: MDLER transition ATC only, do not file.

NOTE: Chart not to scale.

(CONTINUED ON FOLLOWING PAGE)

- ESTWD TRANSITION (ESTWD.HLYWD1)
- FNND A TRANSITION (FNND A.HLYWD1)
- GABBL TRANSITION (GABBL.HLYWD1)
- MDLER TRANSITION (MDLER.HLYWD1)

(HLYWD.HLYWD1) 17117  
HLYWD ONE ARRIVAL (RNAV) Transition Routes

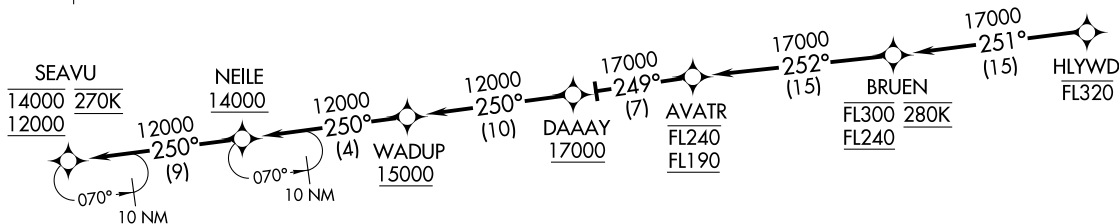
AL-237 (FAA)

LOS ANGELES INTL (LAX)  
LOS ANGELES, CALIFORNIA

LOS ANGELES, CALIFORNIA  
LOS ANGELES INTL (LAX)

HLYWD ONE ARRIVAL (RNAV) Arrival Routes  
(HLYWD, HLYWD1) 02MAR17

SOCAL APP CON  
124.05 353.775  
D-ATIS ARR  
133.8  
LOS ANGELES TOWER  
(N) 133.9 239.3  
(S) 120.95 379.1



(HLYWD, HLYWD1) 17117  
HLYWD ONE ARRIVAL (RNAV) Arrival Routes  
AL-237 (FAA)

LOS ANGELES INTL (LAX)  
LOS ANGELES, CALIFORNIA

LOS ANGELES, CALIFORNIA  
LOS ANGELES INTL (LAX)

ARRIVAL ROUTE DESCRIPTION

From HLYWD on track 251° to cross BRUEN between FL240 and FL300 and at 280K, then on track 252° to cross AVATR between FL190 and FL240, then on track 249° to cross DAAAY at or above 17000, then on track 250° to cross WADUP at or above 15000, then on track 250° to cross NEILE at or above 14000, then on track 250° to cross SEAVU between 12000 and 14000 and at 270K. Expect ILS or RNAV (RNP) RWY 25L approach.

LOST COMMUNICATIONS: In the event of lost communication prior to runway assignment proceed on ILS or LOC RWY 25L.

- NOTE: RADAR required.
- NOTE: RNAV 1.
- NOTE: DME/DME/IRU or GPS required.
- NOTE: Turbojet aircraft only.
- NOTE: Los Angeles landing west traffic.
- NOTE: Expect runway 25L unless otherwise assigned by ATC.
- NOTE: Expect local area altimeter reaching FL230.

NOTE: Chart not to scale.