

LOC/DME I-LAX 109.9 Chan 36	APP CRS 251°	Rwy ldg 11095 TDZE 104 Apt Elev 128
--	------------------------	--

ILS RWY 25L (CAT II & III)

LOS ANGELES INTL (LAX)

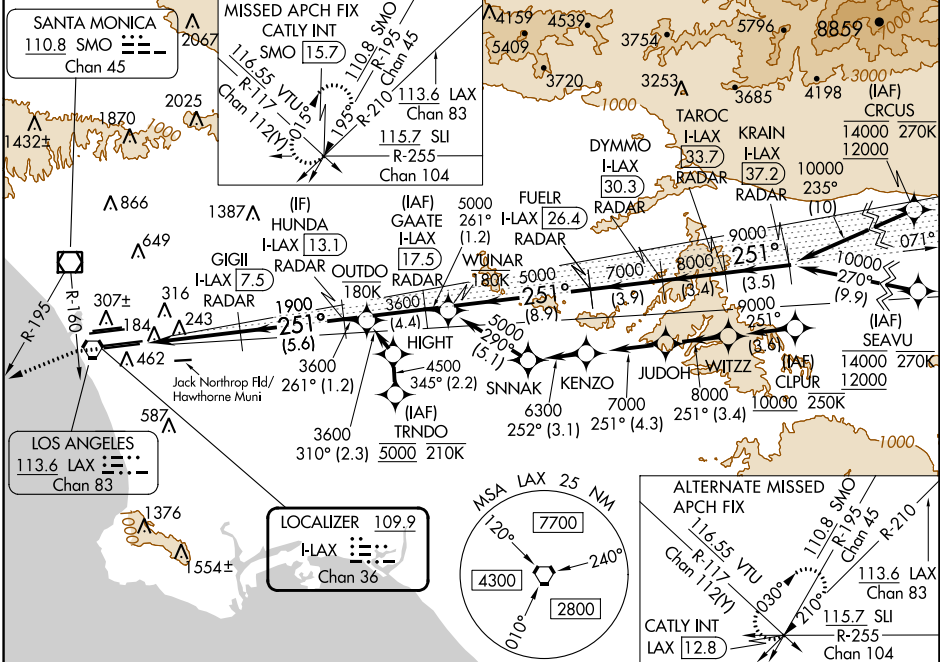
RNP APCH - GPS. From CLIPUR or CRCUS or SEAVU or TRNDO.
DME or RADAR required.

Simultaneous approach authorized.
Simultaneous approach authorized with HHR.



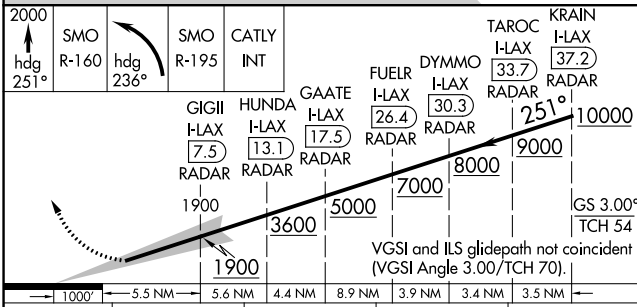
MISSSED APPROACH: Climb to 2000 on heading 251° until crossing the SMO R-160 then left turn on heading 236° and on the SMO R-195 to CATLY INT/SMO 15.7 DME and hold.

D-ATIS ARR 133.8 DEP 135.65	SOCAL APP CON 124.3 363.2 <small>(APCH FM WEST) (225°-044°)</small>	124.9 269.0 <small>(090°-224°)</small>	LOS ANGELES TOWER N 133.9 239.3 S 120.95 379.1	GND CON N 121.65 327.0 S 121.75 327.0 W 121.4 327.0	CLNC DEL 120.35 327.0	CPDLC
---	--	--	--	---	---	-------



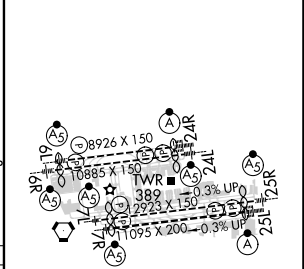
SW-3, 31 OCT 2024 to 28 NOV 2024

SW-3, 31 OCT 2024 to 28 NOV 2024



CATEGORY	A	B	C	D
S-ILS 25L	CAT II RA 107/12 100 DA 204			
S-ILS 25L	CAT III RVR 06			

ELEV 128	D	TDZE 104
----------	----------	----------



CATEGORY II & III ILS - SPECIAL AIRCREW & AIRCRAFT CERTIFICATION REQUIRED

TDZ/CL Rwy's 6R, 7L, 24R, and 25L
HIRL all Rwy's