

LOC/DME I-OSS <b>108.5</b> Chan <b>22</b>	APP CRS <b>251°</b>	Rwy Idg <b>8926 9483</b> TDZE <b>122 123</b> Apt Elev <b>128 128</b>
---	------------------------	---

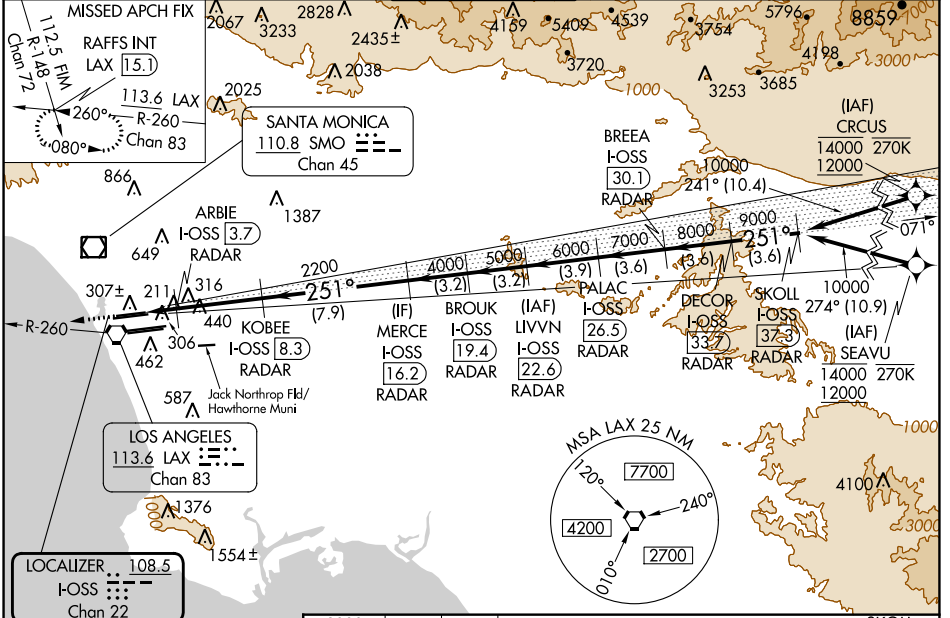
# ILS or LOC RWY 24R

## LOS ANGELES INTL (LAX)

From CRCLUS, SEAVU: RNAV 1-GPS required. DME or RADAR required.

<b>ALSIF-2</b> Rwy 24R 	<b>MALSR</b> Rwy 24L 	<b>MISSED APPROACH:</b> Climb to 2000 on heading 251° and LAX VORTAC R-260 to RAFFS INT/LAX 15.1 DME and hold.
-------------------------------	-----------------------------	--

D-ATIS ARR <b>133.8</b> DEP <b>135.65</b>	SOCAL APP CON <b>124.3 363.2 124.9 269.0</b> [APCH FM WEST] [090°-224°] <b>124.5 235.975 128.5 360.7</b> [225°-044°] [045°-089°]	<b>LOS ANGELES TOWER</b> <b>N 133.9 239.3</b> <b>S 120.95 379.1</b>	<b>GND CON</b> <b>N 121.65 327.0</b> <b>S 121.75 327.0</b> <b>W 121.4 327.0</b>	<b>CLNC DEL</b> <b>120.35 327.0</b>	CPDLC
---	--	---	--	--	-------



SW-3, 31 OCT 2024 to 28 NOV 2024

SW-3, 31 OCT 2024 to 28 NOV 2024

ELEV <b>128</b>	<b>TDZE 24R 122</b>	<b>TDZE 24L 123</b>			
TDZ/CL Rwy 6L, 7L, 24R, and 25L HIRL all Rwy's FAF to MAP 6.4 NM					
Knots	60	90	120	150	180
Min:Sec	6:24	4:16	3:12	2:34	2:08

<b>2000</b> 	<b>LAX R-260</b> <b>RAFFS INT</b>	<b>VGSi and ILS glidepath not coincident</b> (VGSi Angle 3.00/TCH 73).	<b>SKOLL I-OSS 37.3</b> <b>DECOR I-OSS 37.3</b> <b>BREA I-OSS 30.1</b> <b>PALAC I-OSS 26.5</b> <b>LIVVN I-OSS 22.6</b> <b>MERC I-OSS 19.4</b> <b>ARBIE I-OSS 16.2</b> <b>KOBEE I-OSS 13.7</b> <b>SKOLL I-OSS 10.9</b> <b>SEAVU I-OSS 10.9</b> <b>CRCLUS I-OSS 10.4</b>
CATEGORY <b>A</b>	CATEGORY <b>B</b>	CATEGORY <b>C</b>	CATEGORY <b>D</b>
S-ILS 24R	322/18 200 (200-½)		
S-LOC 24R	480/24 358 (400-½)	480/30 358 (400-¾)	
SIDESTEP 24L	500/55 377 (400-1)		500-1½ 377 (400-1½)