

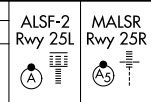
LOC/DME I-LAX	APP CRS	Rwy Idg	25L	25R
109.9	251°	11095	11134	
Chan 36		TDZE	104	104
		Apt Elev	128	128

ILS or LOC RWY 25L

LOS ANGELES INTL (LAX)

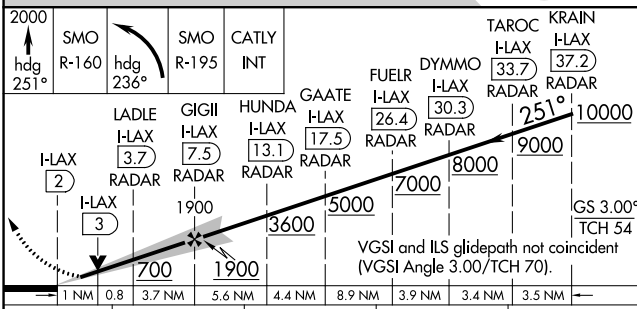
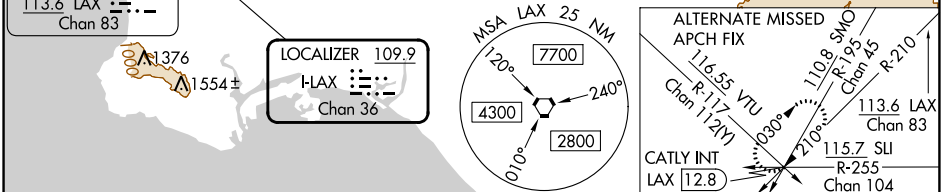
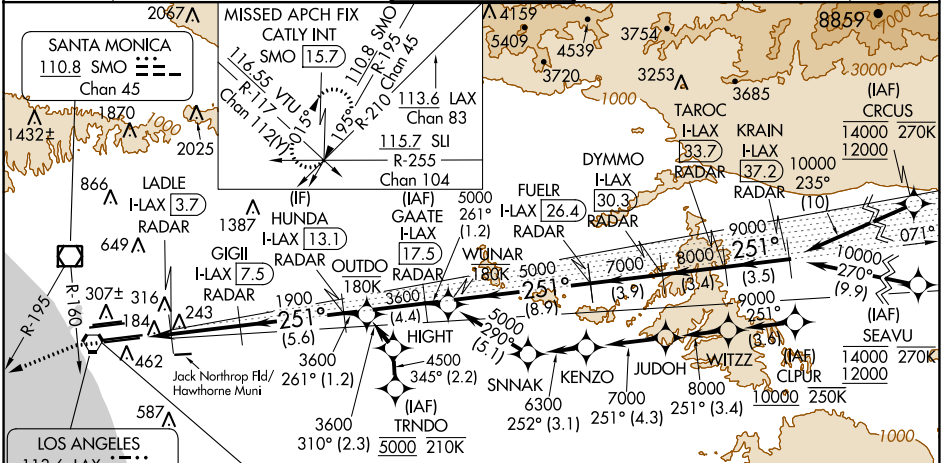
RNP APCH - GPS. From CLIPUR or CRCUS or SEAVU or TRNDO. DME or RADAR required.

Simultaneous approach authorized. Simultaneous approach authorized with HHR.

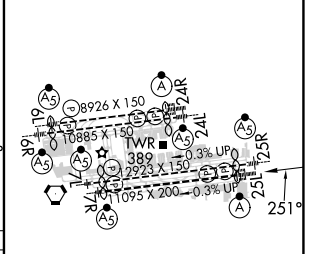


MISSED APPROACH: Climb to 2000 on heading 251° until crossing the SMO R-160, then left turn on heading 236° and on the SMO R-195 to CATLY INT/ SMO 15.7 DME and hold.

D-ATIS	SOCAL APP CON	LOS ANGELES TOWER	GND CON	CLNC DEL	CPDLC
ARR 133.8	124.3 363.2 (APCH FM WEST)	124.9 269.0 (090°-224°)	N 121.65 327.0 S 121.75 327.0 W 121.4 327.0	120.35 327.0	
DEP 135.65	124.5 235.975 (225°-044°)	128.5 360.7 (045°-089°)			



ELEV 128	TDZE 25L 104	TDZE 25R 104
----------	--------------	--------------



CATEGORY	A	B	C	D
S-ILS 25L	304/18 200 (200-1/2)			
S-LOC 25L	480/24	376 (400-1/2)	480/35	376 (400-3/4)
SIDESTEP 25R	480/55 376 (400-1)		480-1 1/2 376 (400-1 1/2)	

TDZ/CL Rwy's 6R, 7L, 24R, and 25L	HRL all Rwy's				
FAF to MAP 5.5 NM					
Knots	60	90	120	150	180
Min:Sec	5:30	3:40	2:45	2:12	1:50

SW-3, 31 OCT 2024 to 28 NOV 2024

SW-3, 31 OCT 2024 to 28 NOV 2024