

LOC/DME I-MKZ	APP CRS	Rwy Idg	7R	7L
109.9	071°		11095	11259
Chan 36		TDZE	128	128
		Apt Elev	128	128

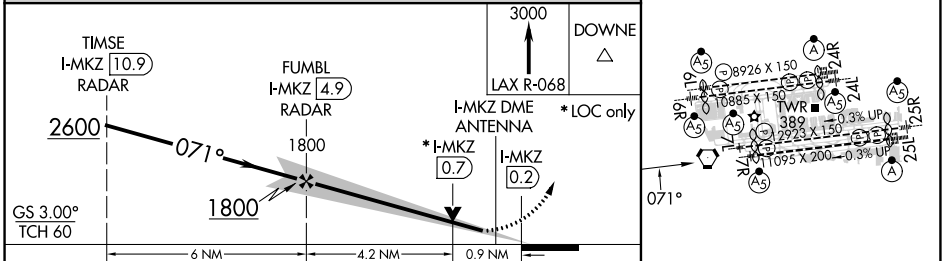
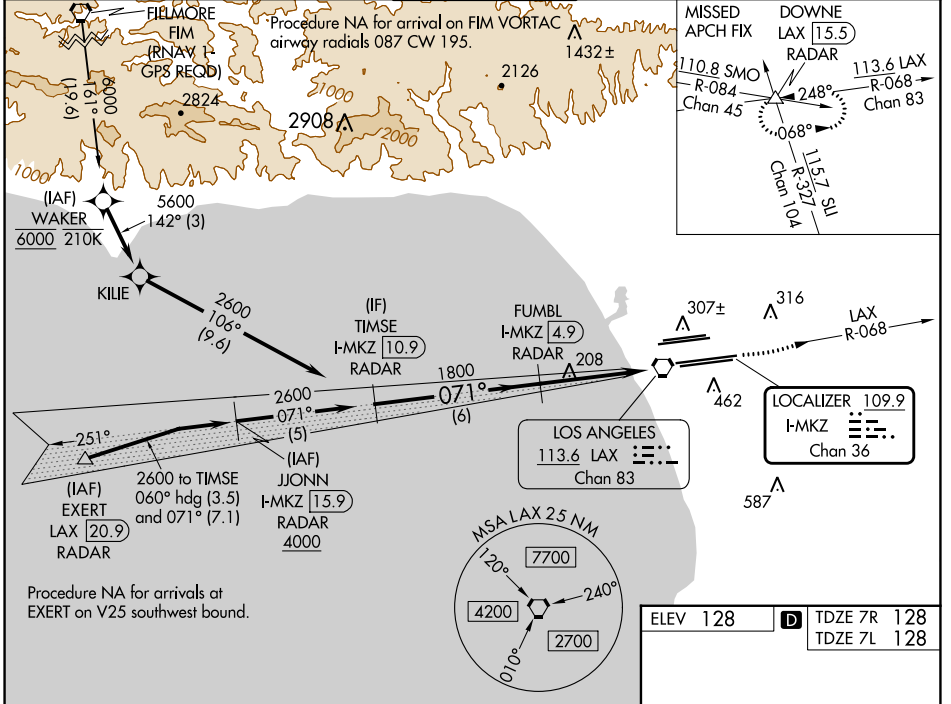
ILS or LOC RWY 7R

LOS ANGELES INTL (LAX)

Simultaneous approach authorized. DME or RADAR required.
 Inop table does not apply to Sidestep Rwy 7L Cats A and B.
 # RVR 1800 authorized with use of FD or AP or HUD to DA.

MALS Rwy 7R	MALS Rwy 7L	MISSED APPROACH: Climb to 3000 on LAX VORTAC R-068 to DOWNE INT/ LAX 15.5 DME/RADAR and hold.
-------------	-------------	---

D-ATIS ARR 133.8 DEP 135.65	SOCAL APP CON 124.3 363.2 (APCH FM WEST) 124.5 235.975 (225°-044°)	124.9 269.0 (090°-224°) 128.5 360.7 (045°-089°)	LOS ANGELES TOWER N 133.9 239.3 S 120.95 379.1	GND CON N 121.65 327.0 S 121.75 327.0 W 121.4 327.0	CLNC DEL 120.35 327.0	CPDLC
---	--	--	--	---	---	-------



GS 3.00° TCH 60	3000	DOWNE
	LAX R-068	
	I-MKZ DME ANTENNA	* LOC only
	* I-MKZ 0.7	I-MKZ 0.2

SW-3, 31 OCT 2024 to 28 NOV 2024

SW-3, 31 OCT 2024 to 28 NOV 2024