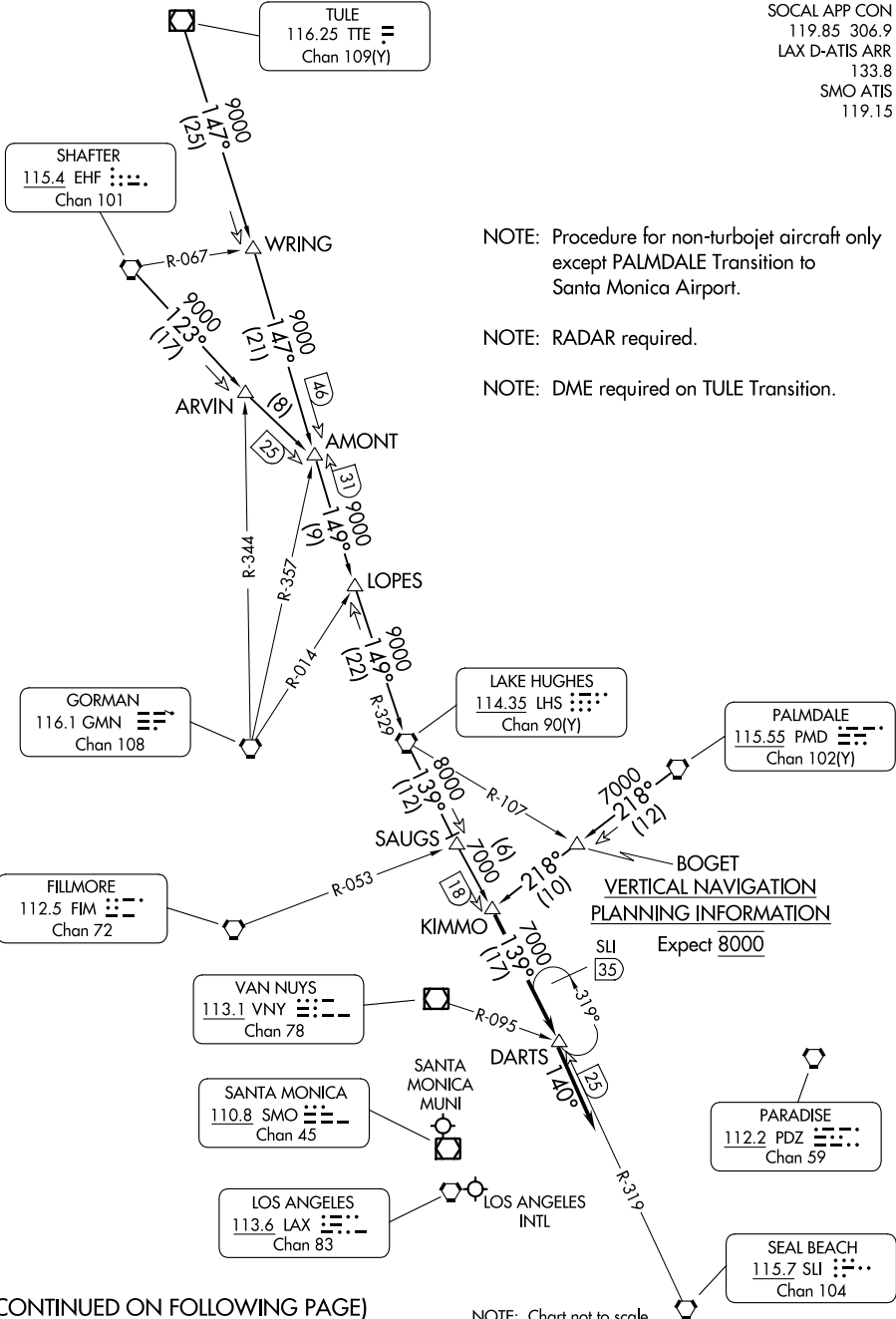


KIMMO THREE ARRIVAL

AL-237 (FAA)

LOS ANGELES, CALIFORNIA

SOCAL APP CON
 119.85 306.9
 LAX D-ATIS ARR
 133.8
 SMO ATIS
 119.15



NOTE: Procedure for non-turbojet aircraft only except PALMDALE Transition to Santa Monica Airport.

NOTE: RADAR required.

NOTE: DME required on TULE Transition.

VERTICAL NAVIGATION PLANNING INFORMATION

Expect 8000

NOTE: Chart not to scale.

SW-3, 31 OCT 2024 to 28 NOV 2024

SW-3, 31 OCT 2024 to 28 NOV 2024

(CONTINUED ON FOLLOWING PAGE)

KIMMO THREE ARRIVAL

LOS ANGELES, CALIFORNIA

ARRIVAL ROUTE DESCRIPTION

LAKE HUGHES TRANSITION (LHS.KIMMO3): From over LHS VORTAC on LHS R-139 to KIMMO INT. Thence. . . .

PALMDALE TRANSITION (PMD.KIMMO3): From over PMD VORTAC on PMD R-218 to KIMMO INT. Thence. . . .

SHAFTER TRANSITION (EHF.KIMMO3): From over EHF VORTAC on EHF R-123 and LHS R-329 to LHS VORTAC, then on LHS R-139 to KIMMO INT. Thence. . . .

TULE TRANSITION (TTE.KIMMO3): From over TTE VOR/DME on TTE R-147 and LHS R-329 to LHS VORTAC, then on LHS R-139 to KIMMO INT. Thence. . . .

. . . .From over KIMMO INT on LHS R-139 and SLI R-319 to DARTS INT/SLI 25 DME.

LANDING LOS ANGELES INTL: Depart DARTS INT heading 140°, expect RADAR vectors to final approach course.

LANDING SANTA MONICA MUNI: Depart DARTS INT heading 140°, expect RADAR vectors to final approach course.

SW-3, 31 OCT 2024 to 28 NOV 2024

SW-3, 31 OCT 2024 to 28 NOV 2024