

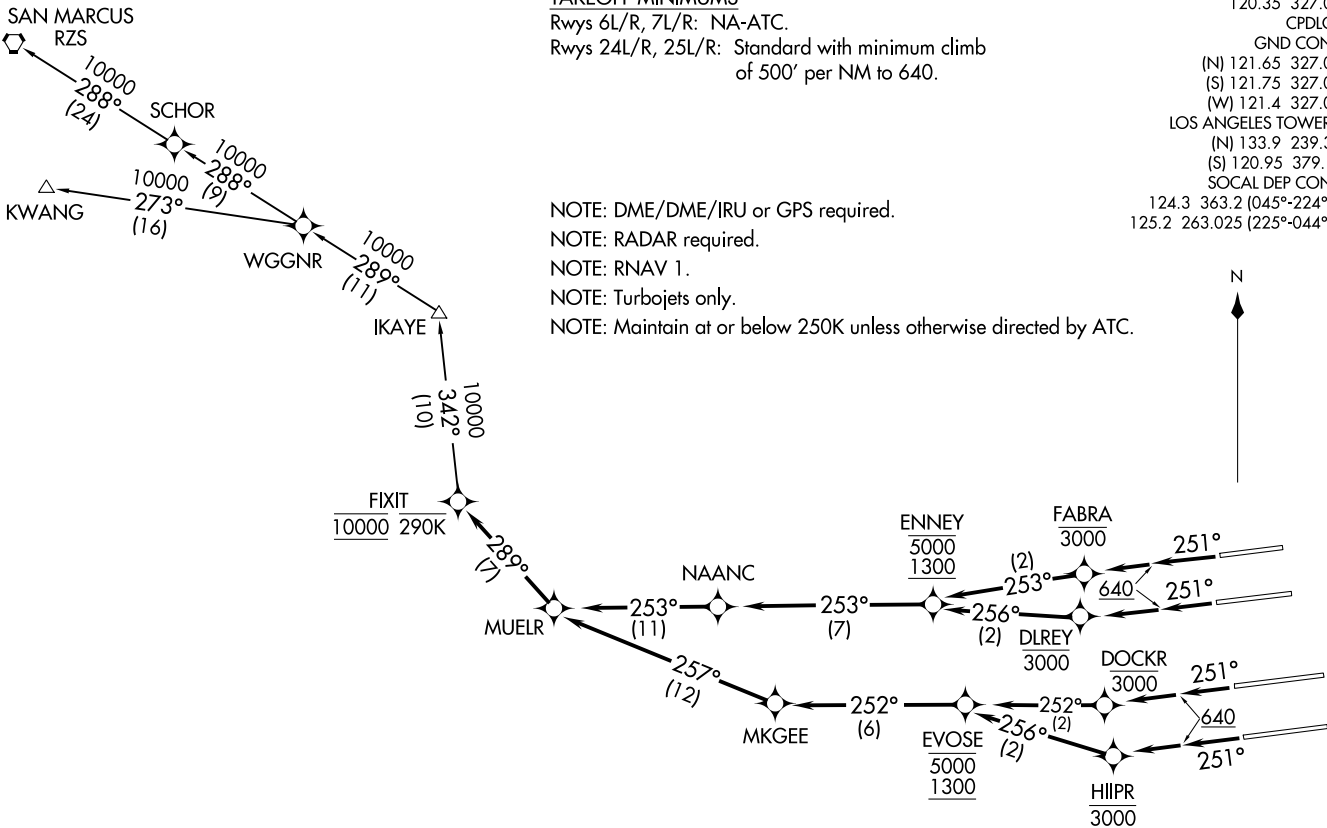
MUCLR FOUR DEPARTURE (RNAV)  
(MUELR4.FIXT) 17AUG17

(MUELR4.FIXT) 17229  
MUCLR FOUR DEPARTURE (RNAV)

AL-237 (FAA)

LOS ANGELES INTL (LAX)  
LOS ANGELES, CALIFORNIA

**TOP ALTITUDE:  
10000**



NOTE: Chart not to scale.

**TAKEOFF MINIMUMS**  
 Rwy's 6L/R, 7L/R: NA-ATC.  
 Rwy's 24L/R, 25L/R: Standard with minimum climb  
 of 500' per NM to 640.

NOTE: DME/DME/IRU or GPS required.  
 NOTE: RADAR required.  
 NOTE: RNAV 1.  
 NOTE: Turbojets only.  
 NOTE: Maintain at or below 250K unless otherwise directed by ATC.

D-ATIS DEP 135.65  
 CLNC DEL 120.35 327.0  
 CPDLC  
 GND CON (N) 121.65 327.0  
 (S) 121.75 327.0  
 (W) 121.4 327.0  
 LOS ANGELES TOWER (N) 133.9 239.3  
 (S) 120.95 379.1  
 SOCIAL DEP CON 124.3 363.2 (045°-224°)  
 125.2 263.025 (225°-044°)

(NARRATIVE ON FOLLOWING PAGE)

LOS ANGELES, CALIFORNIA  
LOS ANGELES INTL (LAX)



DEPARTURE ROUTE DESCRIPTION

TAKEOFF RUNWAY 24L: Climb on heading 251° to 640, then climb direct to cross DLREY at or below 3000, then on track 256° to cross ENNEY at or above 1300 and at or below 5000, then on depicted route to cross FIXIT at 10000, thence. . . .

TAKEOFF RUNWAY 24R: Climb on heading 251° to 640, then climb direct to cross FABRA at or below 3000, then on track 253° to cross ENNEY at or above 1300 and at or below 5000, then on depicted route to cross FIXIT at 10000, thence. . . .

TAKEOFF RUNWAY 25L: Climb on heading 251° to 640, then climb direct to cross HIIPR at or below 3000, then on track 256° to cross EVOSE at or above 1300 and at or below 5000, then on depicted route to cross FIXIT at 10000, thence. . . .

TAKEOFF RUNWAY 25R: Climb on heading 251° to 640, then climb direct to cross DOCKR at or below 3000, then on track 252° to cross EVOSE at or above 1300 and at or below 5000, then on depicted route to cross FIXIT at 10000, thence. . . .

. . . . on (transition). Maintain 10000. Expect filed altitude five minutes after departure.

KWANG TRANSITION (MUEL4.KWANG)

SAN MARCUS TRANSITION (MUEL4.RZS)

SW-3, 31 OCT 2024 to 28 NOV 2024

SW-3, 31 OCT 2024 to 28 NOV 2024