

APP CRS 251°	Rwy Idg 9483
	TDZE 123
	Apt Elev 128


RNAV (RNP) Z RWY 24L

LOS ANGELES INTL (LAX)

RNP AR APCH.

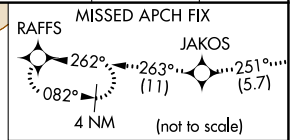
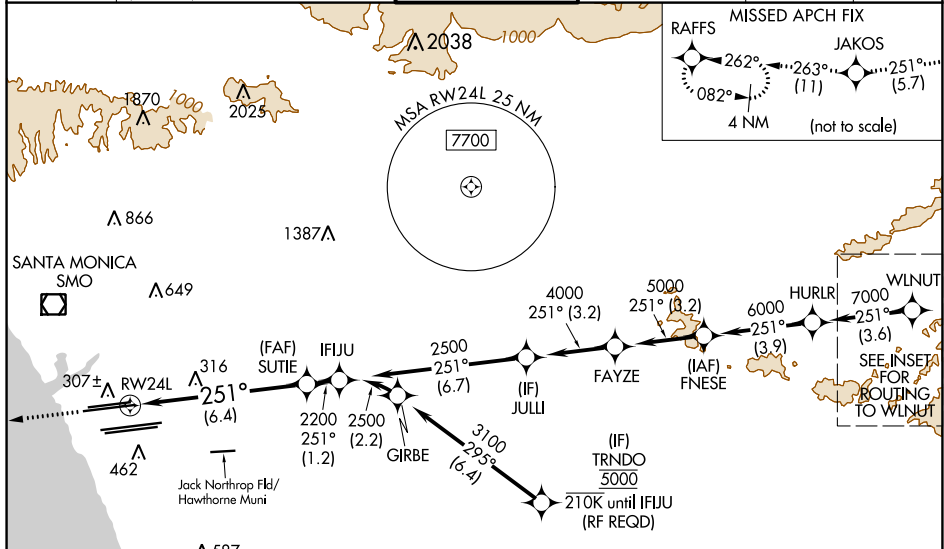
Simultaneous approach authorized. Simultaneous approach authorized with HHR.
 For uncompensated Baro-VNAV systems, procedure NA below 5°C or above 54°C. For inop ALS, increase RNP 0.15 all Cats visibility to 1 3/8 SM.

MALSR

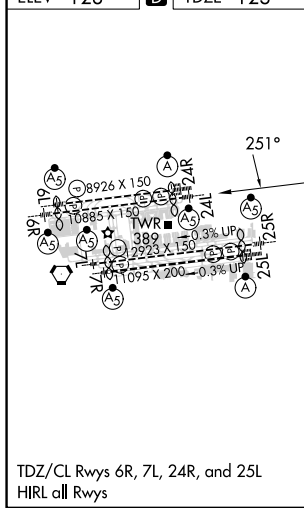
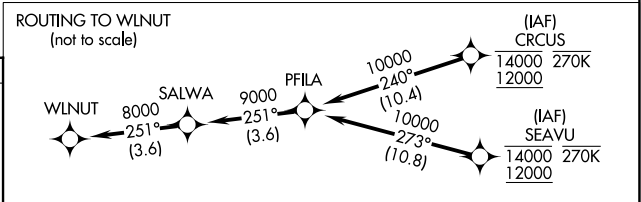


MISSED APPROACH: Climb to 2000 on track 251° to JAKOS and track 263° to RAFFS and hold.

D-ATIS ARR 133.8 DEP 135.65	SOCAL APP CON 124.3 363.2 (APCH FM WEST) (225°-044°)	124.9 269.0 (090°-224°)	LOS ANGELES TOWER N 133.9 239.3 S 120.95 379.1	GND CON N 121.65 327.0 S 121.75 327.0 W 121.4 327.0	CLNC DEL 120.35 327.0	CPDLC
---	--	-----------------------------------	--	---	---	-------



ELEV 128	D	TDZE 123
-----------------	----------	-----------------



2000	JAKOS	fr 263°	RAFFS	See planview for multiple IF locations.
tr 251°				
VGSi and RNAV glidepath not coincident (VGSi Angle 3.00/TCH 79).				
	SUTIE	IFJUU		
	2200	2500		
	RWY 24L			
				GP 3.00° TCH 59

CATEGORY	A	B	C	D
RNP 0.15 DA		545/35	422 (500-%)	
RNP 0.30 DA		592/45	469 (500-%)	

AUTHORIZATION REQUIRED

SW-3, 31 OCT 2024 to 28 NOV 2024

SW-3, 31 OCT 2024 to 28 NOV 2024