

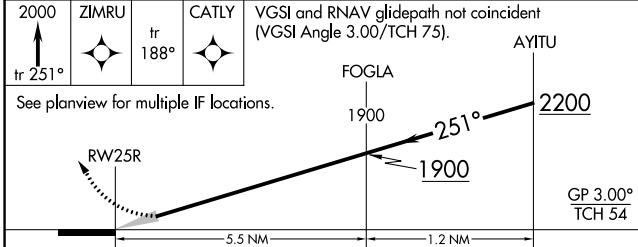
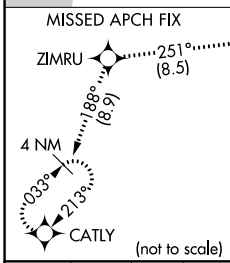
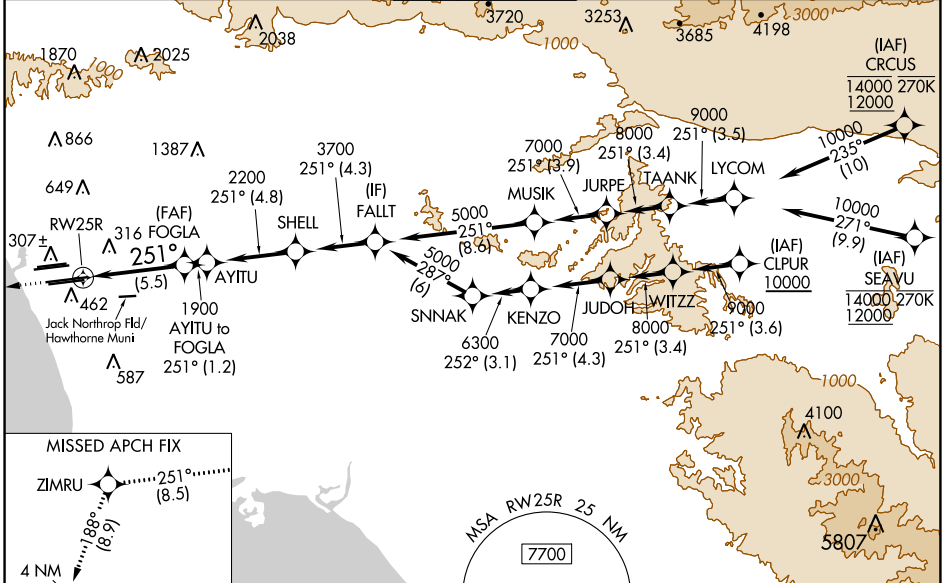
APP CRS	Rwy Idg	11134
251°	TDZE	104
	Apt Elev	128

RNAV (RNP) Z RWY 25R

LOS ANGELES INTL (LAX)

<p>For uncompensated Baro-VNAV systems, procedure NA below 5°C (41°F) or above 54°C (130°F). Simultaneous approach authorized. Simultaneous approach authorized with HHR. GPS required. For inop ALS, increase RNP 0.11 all Cats visibility to RVR 6000.</p>	MALSR	MISSED APPROACH: Climb to 2000 on track 251° to ZIMRU and track 188° to CATLY and hold.

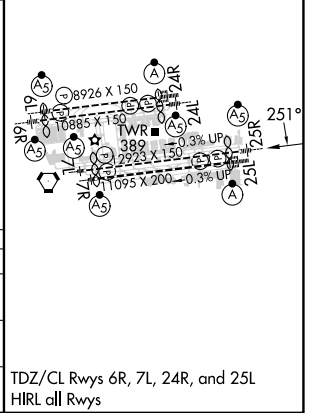
D-ATIS	SOCAL APP CON		LOS ANGELES TOWER		GND CON		CLNC DEL	CPDLC
ARR 133.8	124.3	363.2	124.9	269.0	N 121.65	327.0	120.35	
DEF 135.65	(APCH FM WEST)		(090°-224°)		S 121.75	327.0	327.0	
	(225°-044°)		(045°-089°)		W 121.4	327.0		



CATEGORY	A	B	C	D
RNP 0.11 DA		453/40	349 (400-¾)	
RNP 0.30 DA		544/50	440 (500-1)	

AUTHORIZATION REQUIRED

ELEV 128	TDZE 104
----------	----------



SW-3, 31 OCT 2024 to 28 NOV 2024

SW-3, 31 OCT 2024 to 28 NOV 2024