

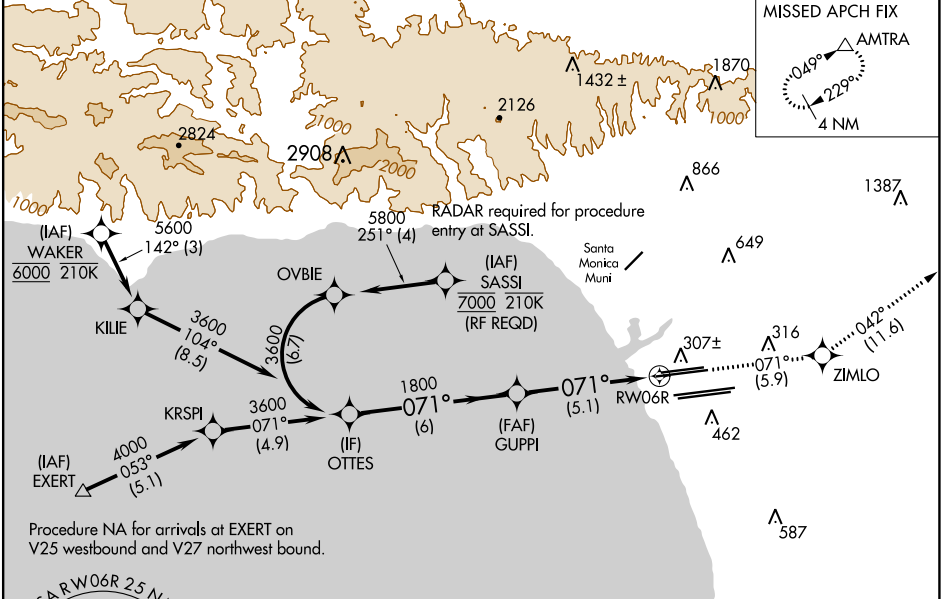
APP CRS	Rwy Idg	9748
071°	TDZE	116
	Apt Elev	128

RNAV (RNP) Z RWY 6R

LOS ANGELES INTL (LAX)

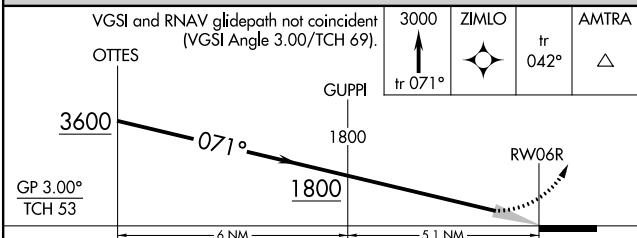
<p>For uncompensated Baro-VNAV systems, procedure NA below 5°C (41°F) or above 54°C (130°F). GPS required. Simultaneous approach authorized. For inop ALS, increase RNP 0.30 all Cats visibility to RVR 6000.</p>	<p>MALSR</p>	<p>MISSED APPROACH: Climb to 3000 on track 071° to ZIMLO and on track 042° to AMTRA and hold.</p>

D-ATIS	<p>SOCL APP CON</p> <p>124.3 363.2 124.9 269.0</p> <p>(APCH FM WEST) (090°-224°)</p> <p>124.5 235.975 128.5 360.7</p> <p>(225°-044°) (045°-089°)</p>	<p>LOS ANGELES TOWER</p> <p>N 133.9 239.3</p> <p>S 120.95 379.1</p>	<p>GND CON</p> <p>N 121.65 327.0</p> <p>S 121.75 327.0</p> <p>W 121.4 327.0</p>	<p>CLNC DEL</p> <p>120.35</p> <p>327.0</p>	<p>CPDLC</p>
--------	--	---	--	--	--------------



SW-3, 31 OCT 2024 to 28 NOV 2024

SW-3, 31 OCT 2024 to 28 NOV 2024



CATEGORY	A	B	C	D
RNP 0.30	DA	471/40	355 (400-¾)	

AUTHORIZATION REQUIRED

ELEV 128	D TDZE 116
----------	-------------------

TDZ/CL Rwy 6R, 7L, 24R, and 25L
HIRL all Rwy's