

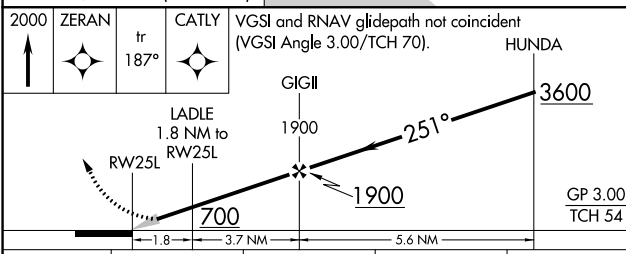
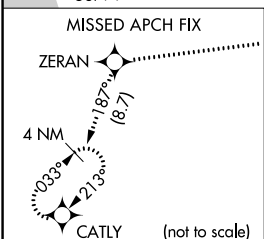
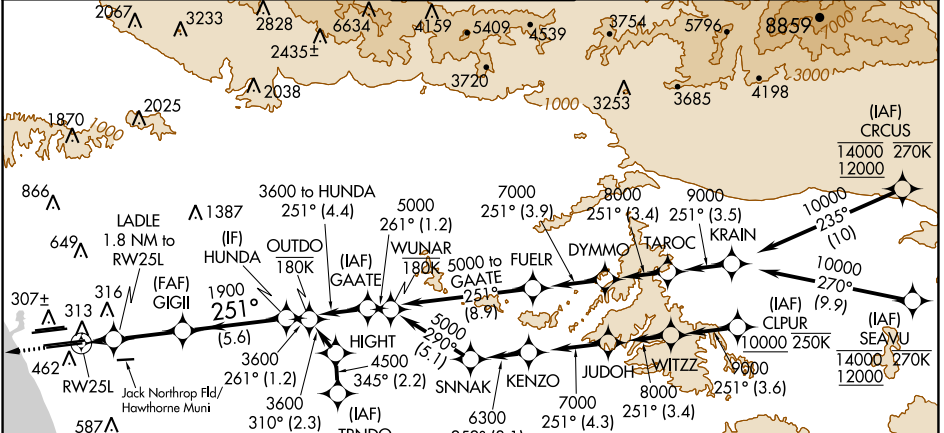
WAAS CH 53507 W25A	APP CRS 251°	Rwy Idg 11095 TDZE 104 Apt Elev 128
----------------------------------------	------------------------	----------------------------------------------------------------

RNAV (GPS) Y RWY 25L

LOS ANGELES INTL (LAX)

RNP APCH - GPS.	ALSF-2	MISSED APPROACH: Climb to 2000 direct ZERAN and on track 187° to CATLY and hold.
<p>▼ For uncompensated Baro-VNAV systems, LNAV/VNAV NA below 5°C or above 54°C. Simultaneous approach authorized. Simultaneous approach authorized with HHR 25. For inop ALS, increase LNAV/VNAV all Cats visibility to RVR 5500, LNAV Cat C/D visibility to 1 3/8 SM. LNAV procedure NA during simultaneous operations. Use of FD or AP required during simultaneous operations.</p>		

D-ATIS ARR 133.8 DEP 135.65	SOCAL APP CON 124.3 363.2 [APCH FM WEST] 124.5 235.975 [225°-044°]	124.9 269.0 (090°-224°) 128.5 360.7 [045°-089°]	LOS ANGELES TOWER N 133.9 239.3 S 120.95 379.1	GND CON N 121.65 327.0 S 121.75 327.0 W 121.4 327.0	CLNC DEL 120.35 327.0	CPDLC
-------------------------------------------------	----------------------------------------------------------------------------------------------	------------------------------------------------------------------------	--------------------------------------------------------------------	-----------------------------------------------------------------------------------	-------------------------------------------	-------



CATEGORY	A	B	C	D
LPV DA		304/18	200 (200-1/2)	
LNAV/VNAV DA		479/35	375 (400-3/4)	
LNAV MDA	580/24	476 (500-1/2)	580/50	476 (500-1)

ELEV 128 **D** TDZE 104

Obstacle chart for RWY 25L showing various obstacles with their MSL altitudes and distances from the runway. Key obstacles include 8926 X 150, 10885 X 150, 388, 2223 X 150, 1095 X 200, 242R, 24L, 25K, and 25L. The chart also shows the runway centerline and the 251-degree heading.

SW-3, 31 OCT 2024 to 28 NOV 2024

SW-3, 31 OCT 2024 to 28 NOV 2024