

(WNN DY3.WNN DY) 19003

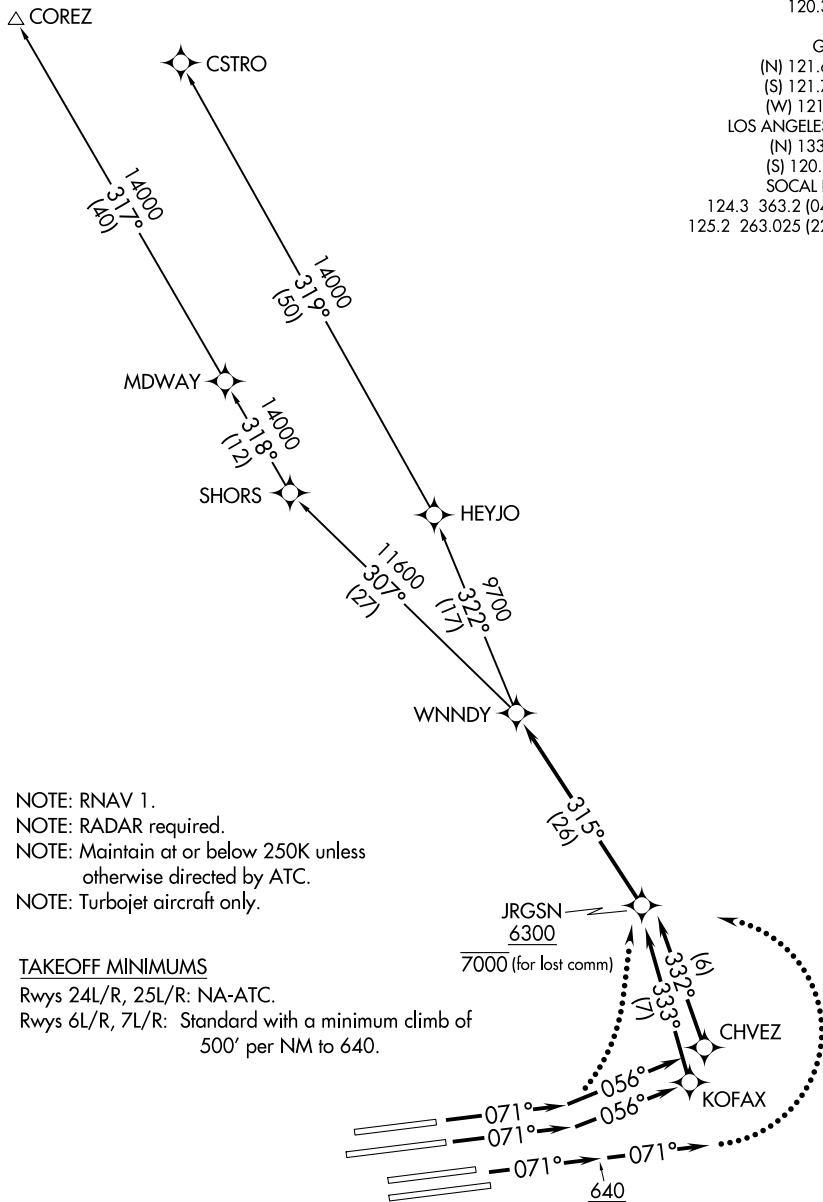
WNN DY THREE DEPARTURE (RNAV)

AL-237 (FAA)

LOS ANGELES INTL (LAX)
LOS ANGELES, CALIFORNIA

**TOP ALTITUDE:
FL230**

D-ATIS DEP 135.65
 CLNC DEL 120.35 327.0
 CPDLC
 GND CON (N) 121.65 327.0
 (S) 121.75 327.0
 (W) 121.4 327.0
 LOS ANGELES TOWER (N) 133.9 239.3
 (S) 120.95 379.1
 SOCAL DEP CON 124.3 363.2 (045°-224°)
 125.2 263.025 (225°-044°)



- NOTE: RNAV 1.
- NOTE: RADAR required.
- NOTE: Maintain at or below 250K unless otherwise directed by ATC.
- NOTE: Turbojet aircraft only.

TAKEOFF MINIMUMS

Rwys 24L/R, 25L/R: NA-ATC.
 Rwys 6L/R, 7L/R: Standard with a minimum climb of 500' per NM to 640.

(NARRATIVE ON FOLLOWING PAGE)

NOTE: Chart not to scale.

WNN DY THREE DEPARTURE (RNAV)

LOS ANGELES, CALIFORNIA
LOS ANGELES INTL (LAX)

(WNN DY3.WNN DY) 03JAN19

SW-3, 31 OCT 2024 to 28 NOV 2024

SW-3, 31 OCT 2024 to 28 NOV 2024



DEPARTURE ROUTE DESCRIPTION

TAKEOFF RUNWAY 6L: Climb heading 071° to intercept course 056° to CHVEZ, then on track 332° to cross JRGSN at or above 6300, then on track 315° to WNNDY, thence. . . .

TAKEOFF RUNWAY 6R: Climb heading 071° to intercept course 056° to KOFAX, then on track 333° to cross JRGSN at or above 6300, then on track 315° to WNNDY, thence. . . .

TAKEOFF RUNWAYS 7L/R: Climb heading 071° to 640, then on heading 071° or as assigned by ATC, for vectors to cross JRGSN at or above 6300, then on track 315° to WNNDY, thence. . . .

. . . .on (transition) maintain FL230. Expect filed altitude 5 minutes after departure.

LOST COMMUNICATIONS

If not in contact with departure control within 5 minutes after departure, turn left and proceed direct JRGSN WP, cross JRGSN at or below 7000. Climb to FL230 or filed altitude whichever is lower, and when able proceed direct filed or assigned route/fix/transition. Aircraft filing FL240 or above, climb to filed altitude ten minutes after departure.

COREZ TRANSITION (WNNDY3.COREZ)

CSTRO TRANSITION (WNNDY3.CSTRO)

SW-3, 31 OCT 2024 to 28 NOV 2024

SW-3, 31 OCT 2024 to 28 NOV 2024