

ZILLI FIVE DEPARTURE (RNAV) (ZILLI5 ZILLI) 23FEB23

LOS ANGELES, CALIFORNIA
LOS ANGELES INTL (LAX)

D-ATIS DEP
135.65
CLNC DEL
120.35 327.0
CPDLC
GND CON
(N) 121.65 327.0
(S) 121.75 327.0
(W) 121.4 327.0
LOS ANGELES TOWER
(N) 133.9 239.3
(S) 120.95 379.1
SOCAL DEP CON
124.3 363.2 (045°-224°)
125.2 263.025 (225°-044°)

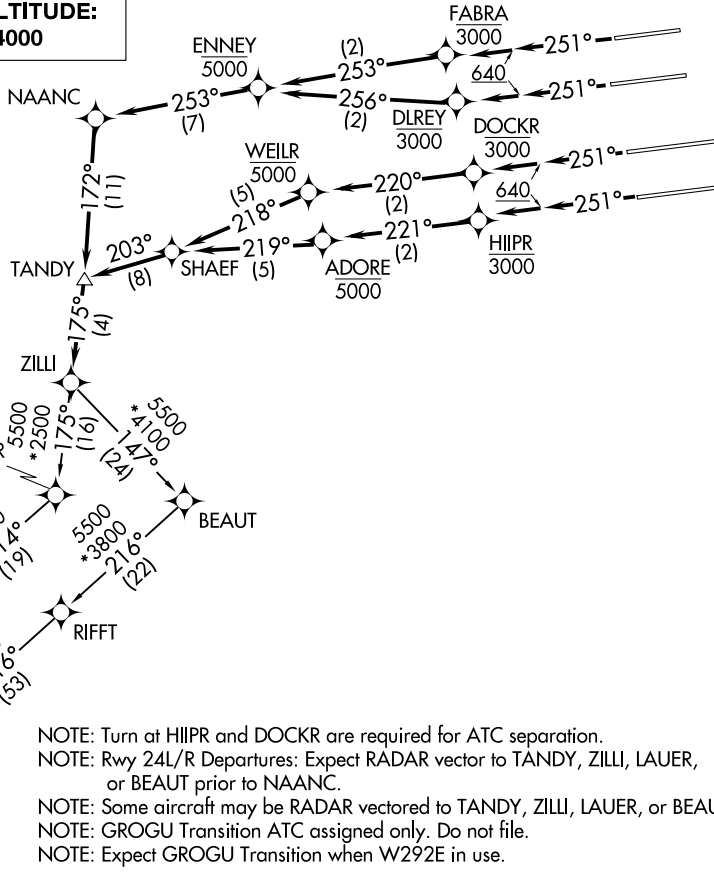
RNAV 1- GPS.
RADAR required.

TOP ALTITUDE:
14000



TAKEOFF MINIMUMS

Rwys 6L/R, 7L/R: NA-ATC.
Rwys 24L/R, 25L/R: Standard with minimum climb of 500' per NM to 640.



(NARRATIVE ON FOLLOWING PAGE)

NOTE: Chart not to scale.

ZILLI5 ZILLI) 23054
ZILLI FIVE DEPARTURE (RNAV)

AL-237 (FAA)

LOS ANGELES INTL (LAX)
LOS ANGELES, CALIFORNIA



DEPARTURE ROUTE DESCRIPTION

TAKEOFF RUNWAY 24L: Climb on heading 251° to 640, then climb direct to cross DLREY at or below 3000, then on track 256° to cross ENNEY at or below 5000, then on depicted route to ZILLI, thence

TAKEOFF RUNWAY 24R: Climb on heading 251° to 640, then climb direct to cross FABRA at or below 3000, then on track 253° to cross ENNEY at or below 5000, then on depicted route to ZILLI, thence

TAKEOFF RUNWAY 25L: Climb on heading 251° to 640, then climb direct to cross HIIIPR at or below 3000, then on track 221° to cross ADORE at or below 5000, then on depicted route to ZILLI, thence

TAKEOFF RUNWAY 25R: Climb on heading 251° to 640, then climb direct to cross DOCKR at or below 3000, then on track 220° to cross WEILR at or below 5000, then on depicted route to ZILLI, thence

. . . . on (transition). Maintain 14000, expect filed altitude five minutes after departure.

FICKY TRANSITION (ZILLI5.FICKY)

GROGU TRANSITION (ZILLI5.GROGU)

SW-3, 31 OCT 2024 to 28 NOV 2024

SW-3, 31 OCT 2024 to 28 NOV 2024