

(HIDEY1.HIDEY) 24193

AL-239 (FAA)

LOUISVILLE MUHAMMAD ALI INTL (SDF)

LOUISVILLE, KENTUCKY

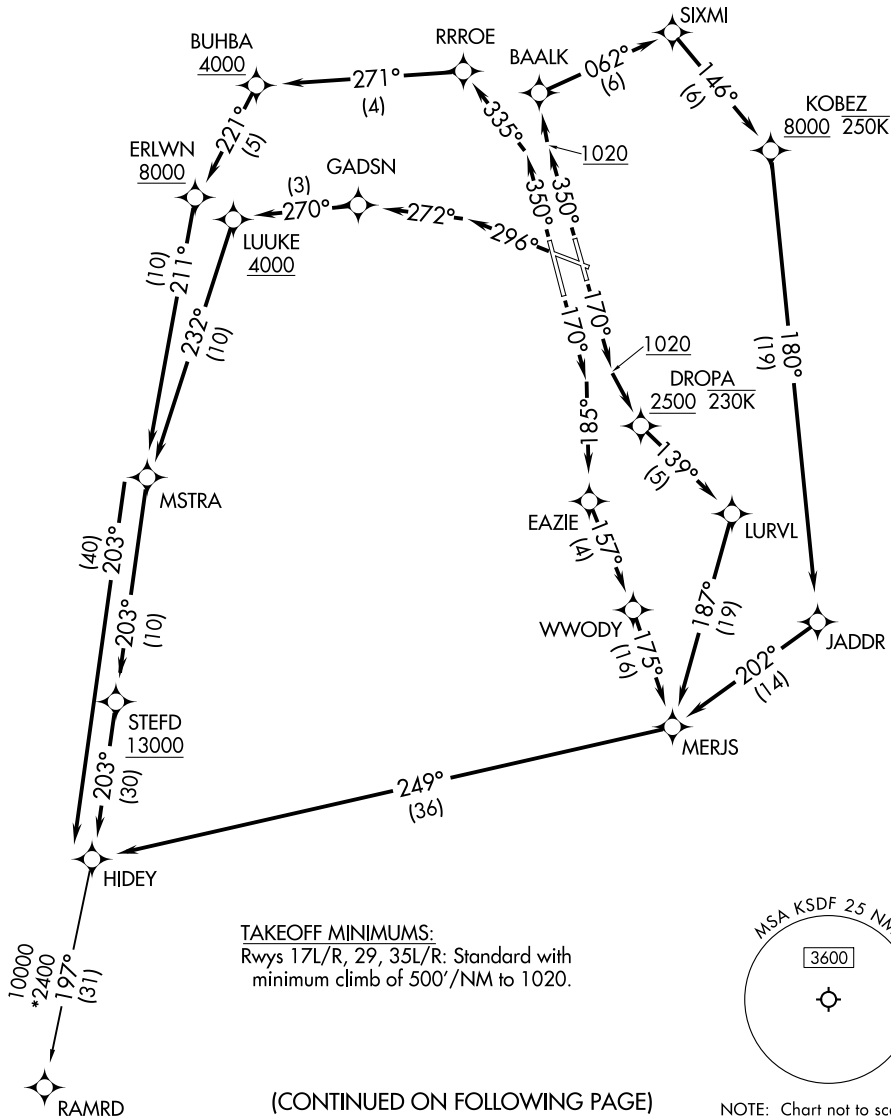
HIDEY ONE DEPARTURE (RNAV)

LOUISVILLE DEP CON
 132.075 327.0
 D-ATIS 118.725
 CLNC DEL
 126.1 275.8
 CPDLC
 GND CON
 121.7 348.6
 LOUISVILLE TOWER
 124.2 257.8

RNAV 1 - DME/DME/IRU or GPS.

RADAR required for non-GPS equipped aircraft.

**TOP ALTITUDE:
13000**



SE-1, 31 OCT 2024 to 28 NOV 2024

SE-1, 31 OCT 2024 to 28 NOV 2024

HIDEY ONE DEPARTURE (RNAV)

(HIDEY1.HIDEY) 11JUL24

LOUISVILLE, KENTUCKY
LOUISVILLE MUHAMMAD ALI INTL (SDF)

(CONTINUED ON FOLLOWING PAGE)

HIDEY ONE DEPARTURE (RNAV)



DEPARTURE ROUTE DESCRIPTION

TAKEOFF RUNWAY 17L: Climb on heading 170° to 1020, then direct to cross DROPA at or above 2500 and at or below 230K, then on track 139° to LURVL, then on track 187° to MERJS, then on track 249° to HIDEY, thence

TAKEOFF RUNWAY 17R: Climb on heading 170° to intercept course 185° to EAZIE, then on track 157° to WWODY, then on track 175° to MERJS, then on track 249° to HIDEY, thence

TAKEOFF RUNWAY 29: Climb on heading 296° to intercept course 272° to GADSN, then on track 270° to cross LUUKE at or above 4000, then on track 232° to MSTRA, then on track 203° to cross STEFD at or above 13000, then on track 203° to HIDEY, thence

TAKEOFF RUNWAY 35L: Climb on heading 350° to intercept course 335° to RRROE, then on track 271° to cross BUHBA at or above 4000, then on track 221° to cross ERLWN at or above 8000, then on track 211° to MSTRA, then on track 203° to HIDEY, thence

TAKEOFF RUNWAY 35R: Climb on heading 350° to 1020, then direct BAALK, then on track 062° to SIXMI, then on track 146° to cross KOBEBZ at or above 8000 and at or below 250K, then on track 180° to JADDR, then on track 202° to MERJS, then on track 249° to HIDEY, thence

. . . . then on transition. Maintain 13000, expect filed altitude 10 minutes after departure.

RAMRD TRANSITION (HIDEY1.RAMRD)

SE-1, 31 OCT 2024 to 28 NOV 2024

SE-1, 31 OCT 2024 to 28 NOV 2024