

LOC/DME I-JJM 110.55 Chan 42 (Y)	APP CRS 350°	Rwy Idg TDZE Apt Elev	7800 479 501
--	------------------------	-----------------------------	---

ILS RWY 35R (SA CAT I)

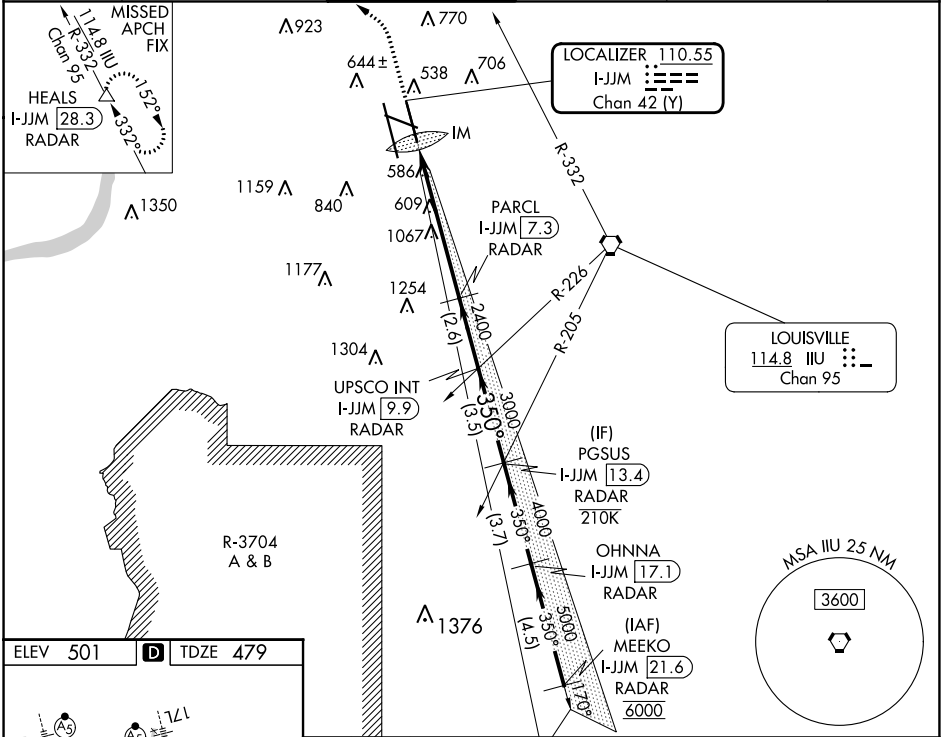
LOUISVILLE MUHAMMAD ALI INTL (SDF')

Simultaneous approach authorized. Requires specific OPSPEC, MSPEC, or LOA approval.

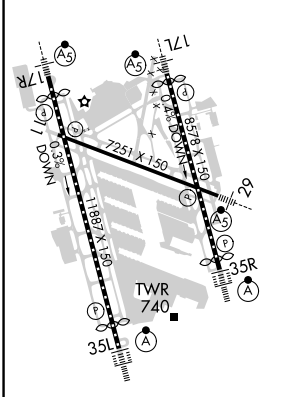


MISSED APPROACH: Climb to 2500 then climbing left turn to 4000 on heading 350° and on IIL VORTAC R-332 to HEALS/28.3 DME/RADAR and hold.

D-ATIS 118.725	LOUISVILLE APP CON 132.075 327.0	LOUISVILLE TOWER 124.2 257.8	GND CON 121.7 348.6	CLNC DEL 126.1 275.8	CPDLC
--------------------------	--	--	-------------------------------	--------------------------------	-------



ELEV 501	D	TDZE 479
-----------------	----------	-----------------



2500	4000	hdg 350°	IIL R-332	HEALS	VGSI and ILS glidepath not coincident (VGSI Angle 3.00/TCH 72).	PGSUS I-JJM [13.4] RADAR
					PARCL I-JJM [7.3] RADAR	UPSCO INT I-JJM [9.9] RADAR
					2400	3000
					2400	3000
					5.9 NM	2.6 NM
					3.5 NM	
						GS 3.00° TCH 60
CATEGORY	A	B	C	D		
S-ILS 35R	RA 162/14 150 DA 629					

SA CATEGORY I ILS- SPECIAL AIRCREW & AIRCRAFT CERTIFICATION REQUIRED

SE-1, 31 OCT 2024 to 28 NOV 2024

SE-1, 31 OCT 2024 to 28 NOV 2024