

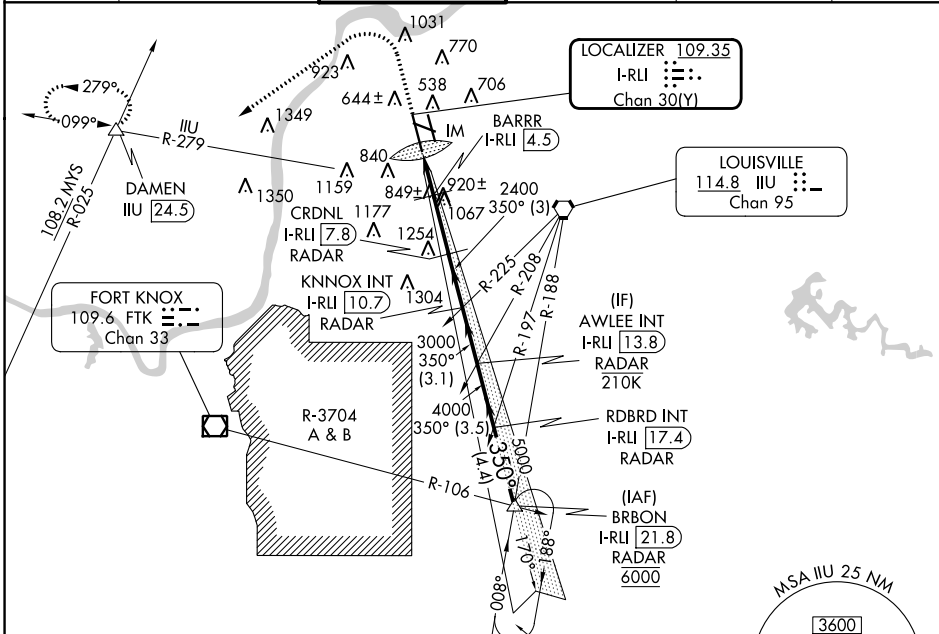
LOC/DME I-RLI 109.35	APP CRS 350°	Rwy Idg TDZE Apt Elev	10000 464 501
Chan 30 (Y)			

ILS or LOC RWY 35L

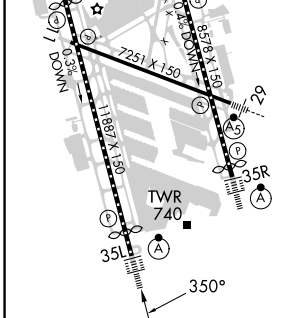
LOUISVILLE MUHAMMAD ALI INTL (SDF)

DME required for LOC only. RADAR required.		ALSF-2 	MISSED APPROACH: Climb to 1000 then climbing left turn to 4000 on heading 240° and IJU VORTAC R-279 to DAMEN INT/ IJU 24.5 DME and hold.
<p>▼ Simultaneous approach authorized. Circling Rwy 11 NA at night.</p> <p>▲ For inop ALS, increase S-LOC 35L Cat C/D visibility to 1 3/4 SM.</p>			

D-ATIS 118.725	LOUISVILLE APP CON 132.075 327.0	LOUISVILLE TOWER 124.2 257.8	GND CON 121.7 348.6	CLNC DEL 126.1 275.8	CPDLC
--------------------------	--	--	-------------------------------	--------------------------------	-------



ELEV 501	D TDZE 464
TDZ/CL Rwy 17L, 17R, 35L, and 35R HIRL all Rwy	



1000	4000	DAMEN	VGSI and ILS glidepath not coincident (VGSI Angle 3.00/TCH 75).	AWLEE INT
↑	hdg 240°	IJU R-279		I-RLI 13.8
				RADAR

0.1	1.7	0.9 NM	3.3 NM	3 NM	3.1 NM	D
CATEGORY		A	B	C	D	
S-ILS 35L		664/18 200 (200-1/2)				
S-LOC 35L		1100/24	636 (600-1/2)	1100-1 3/4	636 (600-1 3/8)	
CIRCLING		1100-1 599 (600-1)	1140-1 639 (700-1)	1160-1 3/4 659 (700-1 3/4)	1400-3 899 (900-3)	

FAF to MAP 5.9 NM					
Knots	60	90	120	150	180
Min:Sec	5:54	3:56	2:57	2:22	1:58

SE-1, 31 OCT 2024 to 28 NOV 2024

SE-1, 31 OCT 2024 to 28 NOV 2024