

LOUISVILLE, KENTUCKY

AL-239 (FAA)

24305

APP CRS	Rwy Idg	<b>7800</b>
<b>170°</b>	TDZE	<b>499</b>
	Apt Elev	<b>501</b>

# RNAV (RNP) Z RWY 17L

LOUISVILLE MUHAMMAD ALI INTL (SDF)

RNP AR APCH - GPS.

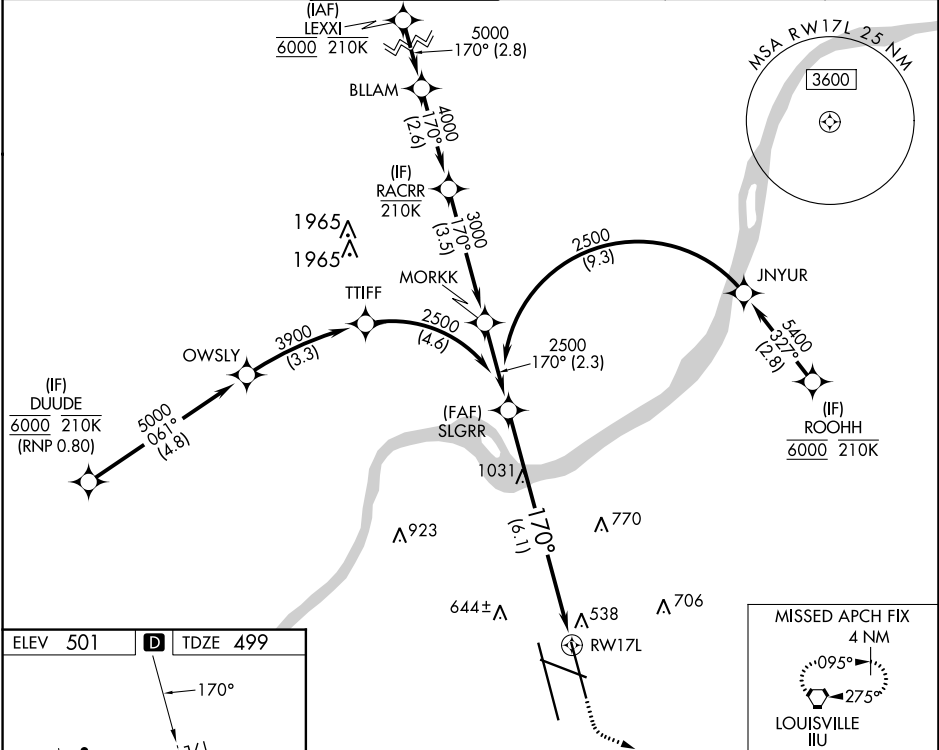
**▼** For uncompensated Baro-VNAV systems, procedure NA below -13°C or above 54°C. Simultaneous approach authorized.

MALSR



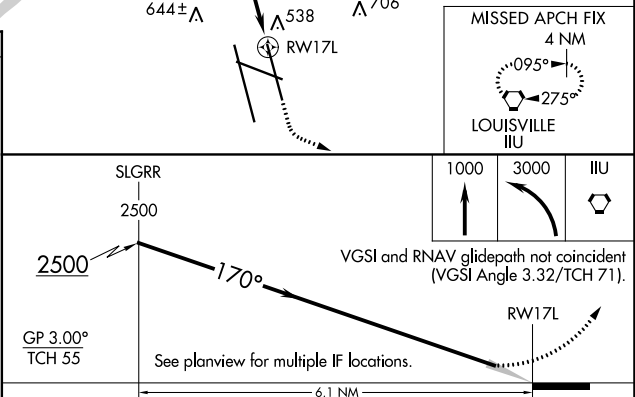
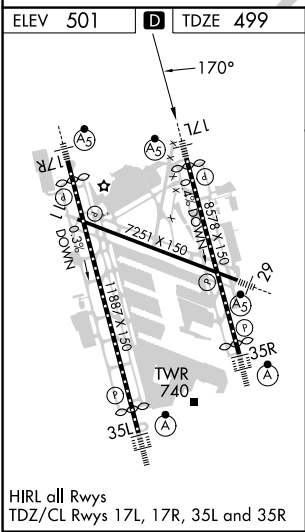
**MISSED APPROACH:** Climb to 1000 then climbing left turn to 3000 direct IIL VORTAC and hold, continue climb-in-hold to 3000.

D-ATIS <b>118.725</b>	LOUISVILLE APP CON <b>132.075 327.0</b>	LOUISVILLE TOWER <b>124.2 257.8</b>	GND CON <b>121.7 348.6</b>	CLNC DEL <b>126.1 275.8</b>	CPDLC
--------------------------	--	--	-------------------------------	--------------------------------	-------



SE-1, 31 OCT 2024 to 28 NOV 2024

SE-1, 31 OCT 2024 to 28 NOV 2024



CATEGORY	A	B	C	D
RNP 0.30 DA		936/40	437 (500-¾)	

## AUTHORIZATION REQUIRED

LOUISVILLE, KENTUCKY  
Amdt 1A 31OCT24

LOUISVILLE MUHAMMAD ALI INTL (SDF)  
38°10'N-85°44'W  
**RNAV (RNP) Z RWY 17L**