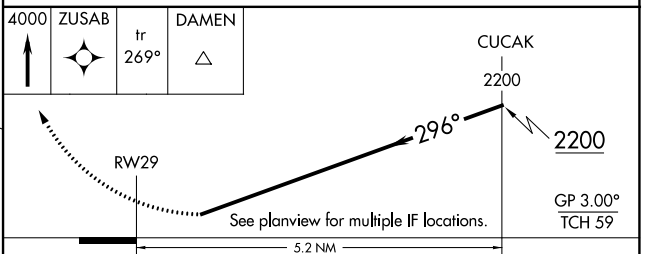
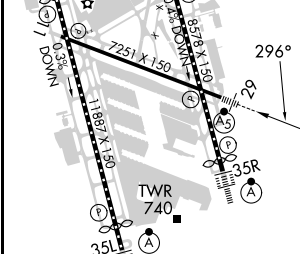
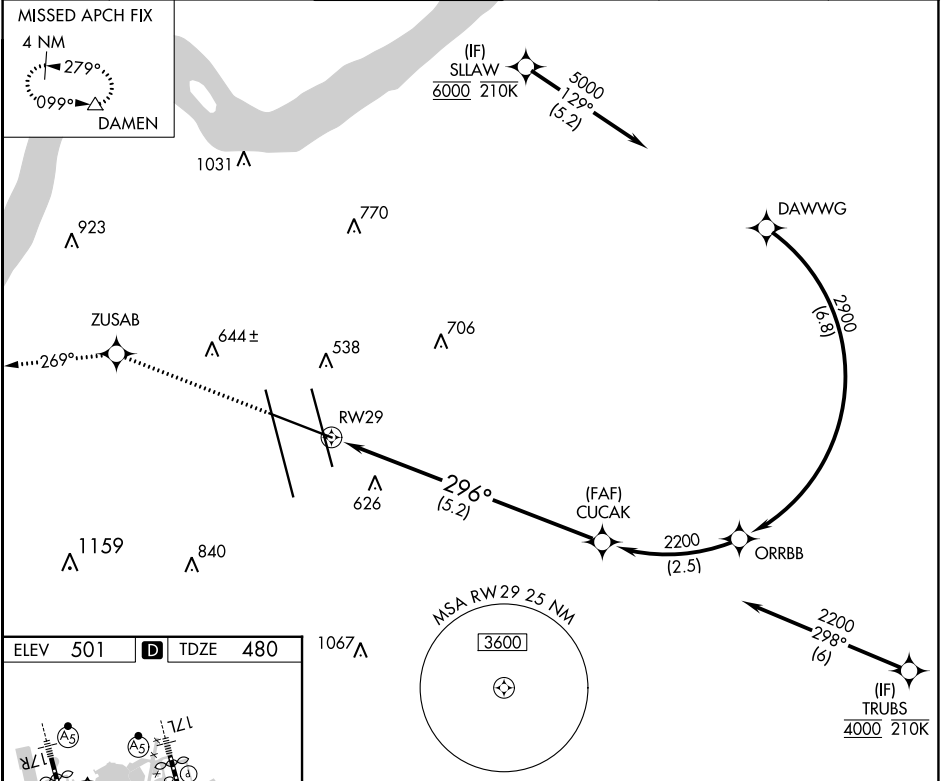


APP CRS	Rwy Idg	<b>7250</b>
<b>296°</b>	TDZE	<b>480</b>
	Apt Elev	<b>501</b>

# RNAV (RNP) Z RWY 29

LOUISVILLE MUHAMMAD ALI INTL (SDF)

RNP AR APCH - GPS.			MALSR	MISSED APPROACH: Climb to 4000 direct ZUSAB and on track 269° to DAMEN and hold.	
▼ For uncompensated Baro-VNAV systems, procedure NA below -13°C or above 54°C.					
D-ATIS	LOUISVILLE APP CON	LOUISVILLE TOWER	GND CON	CLNC DEL	CPDLC
<b>118.725</b>	<b>132.075 327.0</b>	<b>124.2 257.8</b>	<b>121.7 348.6</b>	<b>126.1 275.8</b>	



CATEGORY	A	B	C	D
RNP 0.30 DA	908/40 428 (500-¾)			

HIRL all Rwys  
TDZ/CL Rwys 17L, 17R, 35L and 35R

**AUTHORIZATION REQUIRED**

SE-1, 31 OCT 2024 to 28 NOV 2024

SE-1, 31 OCT 2024 to 28 NOV 2024