

APP CRS <b>350°</b>	Rwy Idg <b>10000</b> TDZE <b>464</b> Apt Elev <b>501</b>
------------------------	--

# RNAV (RNP) Z RWY 35L

LOUISVILLE MUHAMMAD ALI INTL (SDF)

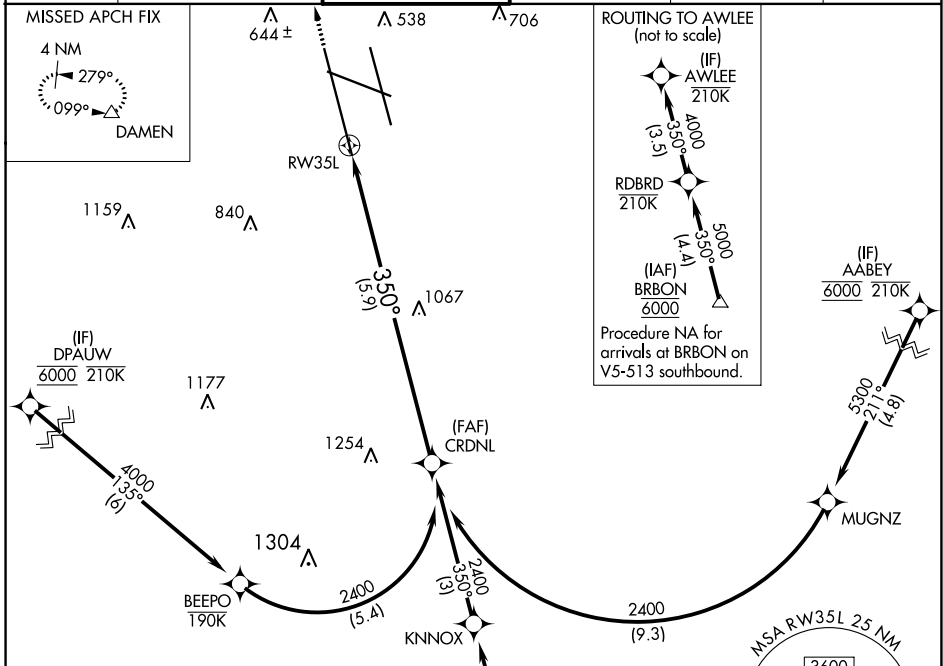
RNP AR APCH - GPS.

For uncompensated Baro-VNAV systems, procedure NA below -10°C or above 54°C. Simultaneous approach authorized. For inop ALS, increase RNP 0.11 all Cats visibility to RVR 4500.



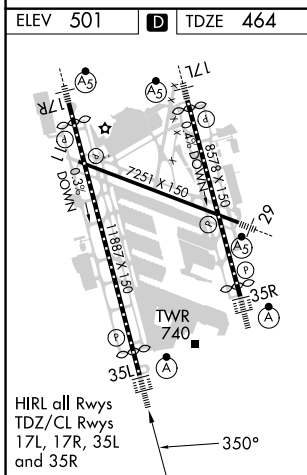
MISSED APPROACH: Climb to 1000 then climbing left turn to 4000 direct DAMEN and hold.

D-ATIS <b>118.725</b>	LOUISVILLE APP CON <b>132.075 327.0</b>	LOUISVILLE TOWER <b>124.2 257.8</b>	GND CON <b>121.7 348.6</b>	CLNC DEL <b>126.1 275.8</b>	CPDLC
--------------------------	--	--	-------------------------------	--------------------------------	-------



SE-1, 31 OCT 2024 to 28 NOV 2024

SE-1, 31 OCT 2024 to 28 NOV 2024



R-3704 A & B

(IF) AWLEE 210K SEE INSET FOR ROUTING TO AWLEE

1000 4000 DAMEN VGSi and RNAV glidepath not coincident (VGSi Angle 3.00/TCH 75).

CRDNL 2400

RW35L 350° 2400

See planview for multiple IF locations.

5.9 NM GP 3.00° TCH 59

CATEGORY	A	B	C	D
RNP 0.11 DA		769/24	305 (300-½)	
RNP 0.30 DA		897/40	433 (400-¾)	

**AUTHORIZATION REQUIRED**