

APP CRS	Rwy Idg	7800
350°	TDZE	479
	Apt Elev	501

RNAV (RNP) Z RWY 35R

LOUISVILLE MUHAMMAD ALI INTL (SDF)

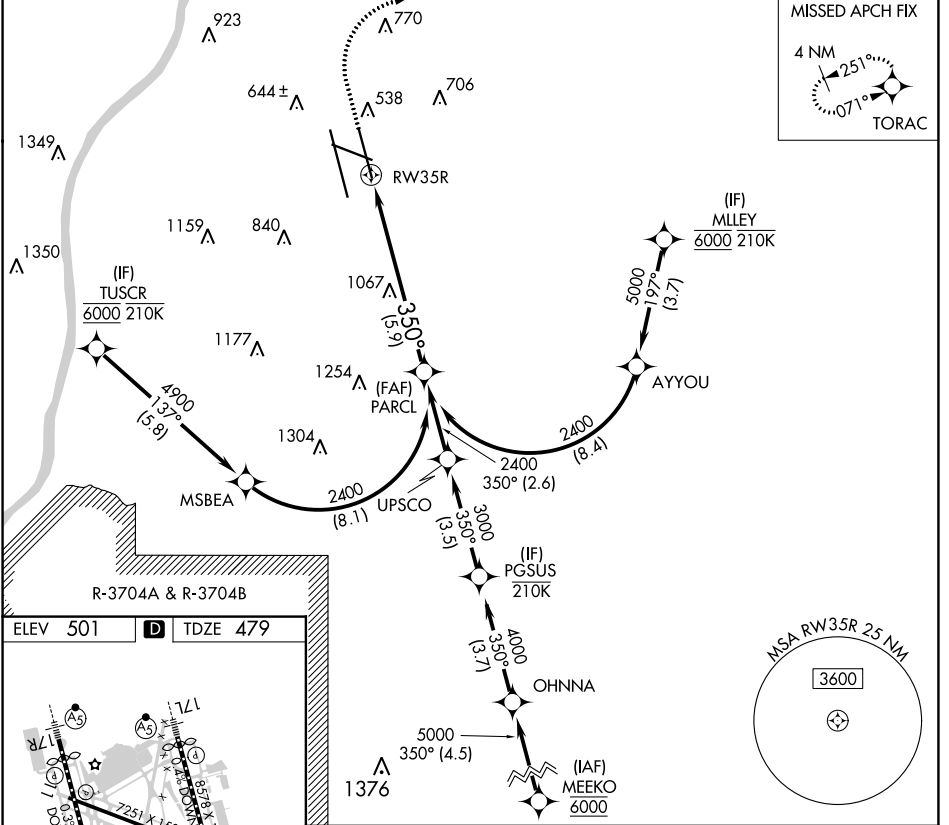
RNP AR APCH - GPS.

▼ For uncompensated Baro-VNAV systems, procedure NA below -13°C or above 54°C. For inop ALS, increase RNP 0.12 all Cats visibility to RVR 4500. Simultaneous approach authorized.

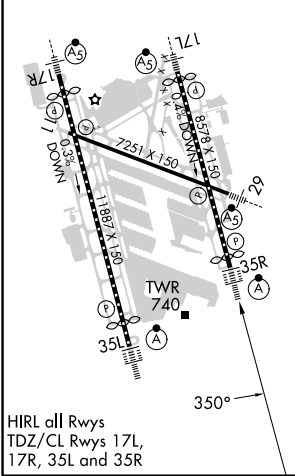
ALSF-2

MISSED APPROACH: Climb to 1600 then climbing right turn to 4000 direct TORAC and hold.

D-ATIS	LOUISVILLE APP CON	LOUISVILLE TOWER	GND CON	CLNC DEL	CPDLC
118.725	132.075 327.0	124.2 257.8	121.7 348.6	126.1 275.8	



ELEV	501	D	TDZE	479
------	------------	----------	------	------------



HIRL all Rwys
TDZ/CL Rwys 17L,
17R, 35L and 35R

1600	4000	TORAC	VGSI and RNAV glidepath not coincident (VGSI Angle 3.00/TCH 72). See planview for multiple IF locations.	PARCL
				2400
RW35R			350°	2400
			5.9 NM	GP 3.00° TCH 60
CATEGORY	A	B	C	D
RNP 0.12 DA		792/24	313 (300-1/2)	
RNP 0.30 DA		892/40	413 (400-3/4)	

AUTHORIZATION REQUIRED

SE-1, 31 OCT 2024 to 28 NOV 2024

SE-1, 31 OCT 2024 to 28 NOV 2024