

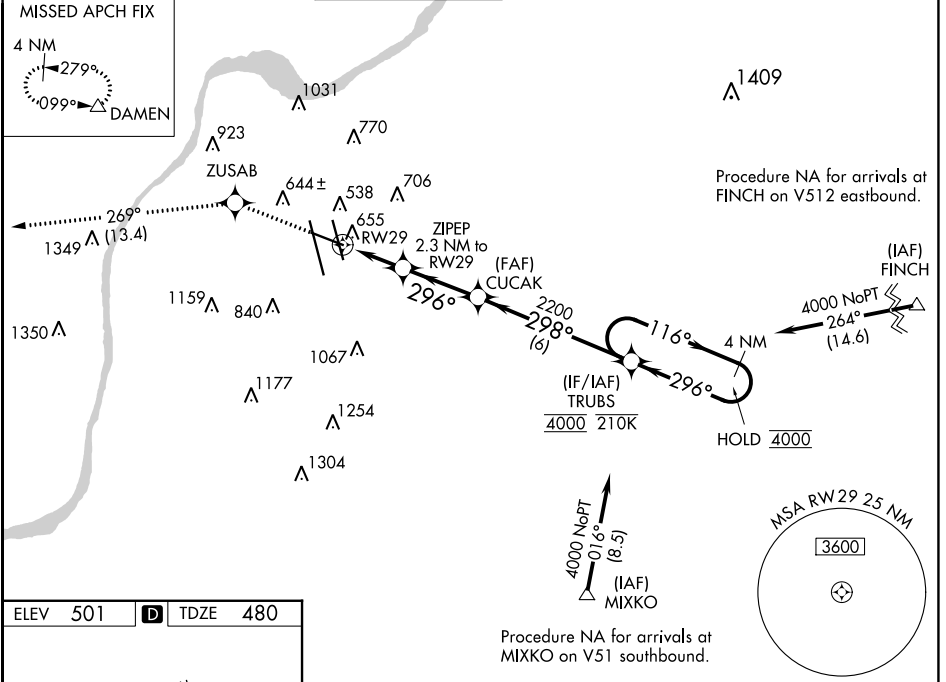
WAAS CH 93643 W29A	APP CRS 296°	Rwy Idg 7250 TDZE 480 Apt Elev 501
--	------------------------	---

RNAV (GPS) Y RWY 29

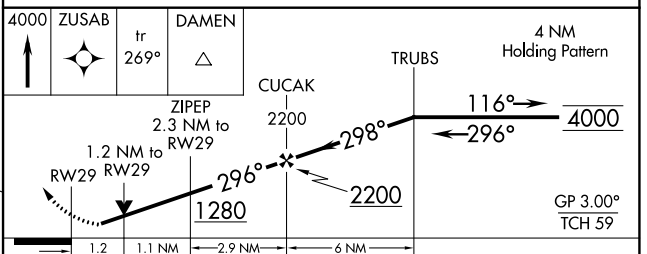
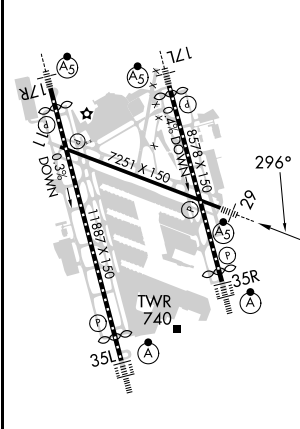
LOUISVILLE MUHAMMAD ALI INTL (SDF)

RNP APCH - GPS.		MALSRS	MISSED APPROACH: Climb to 4000 direct ZUSAB and on track 269° to DAMEN and hold.
<p>▼ Rwy 29 helicopter visibility reduction below RVR 4000 NA. Circling Rwy 11 NA at night. For uncompensated Baro-VNAV systems, LNAV/VNAV NA below -13°C or above 54°C. For inop ALS, increase LPV all Cats visibility to RVR 4500 and LNAV Cats A/B visibility to RVR 5500.</p>			

D-ATIS 118.725	LOUISVILLE APP CON 132.075 327.0	LOUISVILLE TOWER 124.2 257.8	GND CON 121.7 348.6	CLNC DEL 126.1 275.8	CPDLC
--------------------------	--	--	-------------------------------	--------------------------------	-------



ELEV 501	D	TDZE 480
----------	----------	----------



CATEGORY	A	B	C	D
LPV DA		761/40	281 (300-¾)	
LNAV/VNAV DA		920/40	440 (500-¾)	
LNAV MDA		920/40	440 (500-¾)	
C CIRCLING	1040-1 539 (600-1)	1140-1 639 (700-1)	1160-1¾ 659 (700-1¾)	1400-3 899 (900-3)

HIRL all Rwys
TDZ/CL Rwys 17L, 17R, 35L and 35R

SE-1, 31 OCT 2024 to 28 NOV 2024

SE-1, 31 OCT 2024 to 28 NOV 2024