

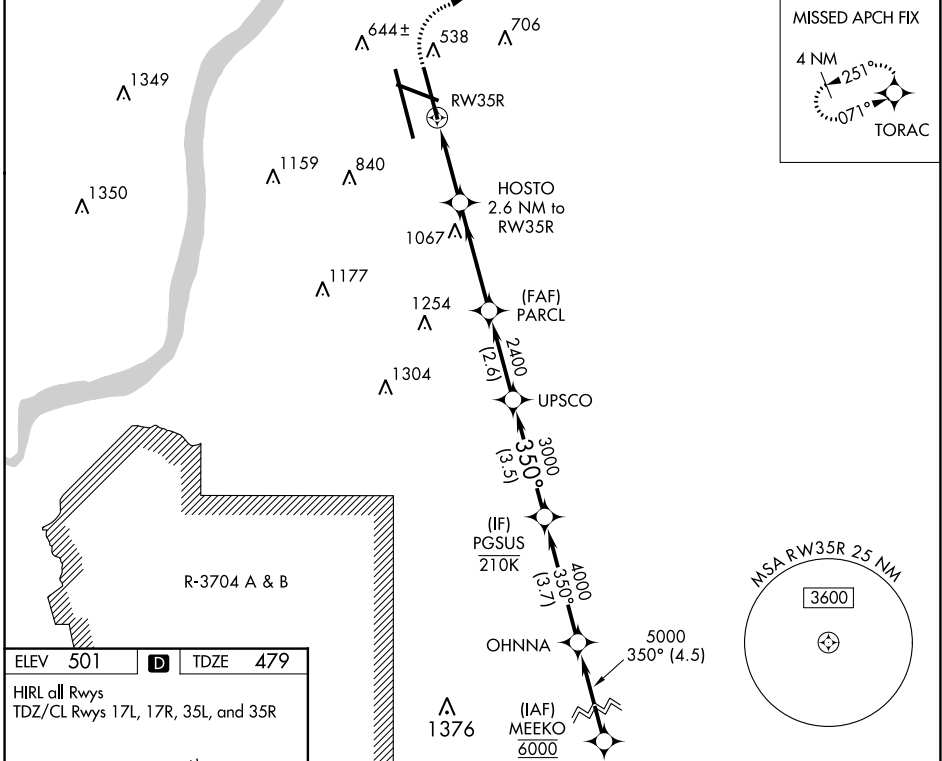
WAAS CH <b>70709</b> <b>W35D</b>	APP CRS <b>350°</b>	Rwy ldg TDZE Apt Elev	<b>7800</b> <b>479</b> <b>501</b>
--	------------------------	-----------------------------	---

# RNAV (GPS) Y RWY 35R

LOUISVILLE MUHAMMAD ALI INTL (SDF)

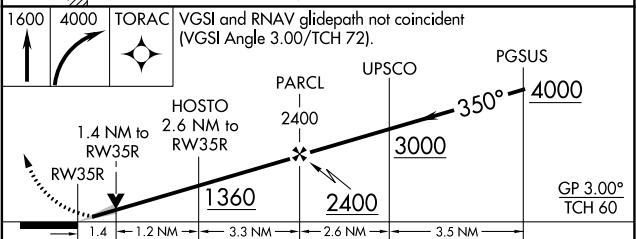
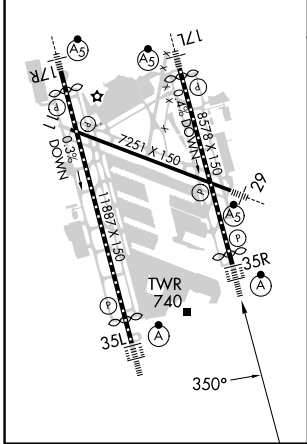
RNP APCH - GPS.		ALSF-2 MISSED APPROACH: Climb to 1600 then climbing right turn to 4000 direct TORAC and hold.	
Simultaneous approach authorized. LNAV procedure NA during simultaneous operations. Use of FD or AP required during simultaneous operations. Circling Rwy 11 NA at night. For uncompensated Baro-VNAV systems, LNAV/VNAV NA below -13°C or above 54°C.			

D-ATIS <b>118.725</b>	LOUISVILLE APP CON <b>132.075 327.0</b>	LOUISVILLE TOWER <b>124.2 257.8</b>	GND CON <b>121.7 348.6</b>	CLNC DEL <b>126.1 275.8</b>	CPDLC
--------------------------	--	--	-------------------------------	--------------------------------	-------



ELEV <b>501</b>	<b>D</b>	TDZE <b>479</b>
-----------------	----------	-----------------

HIRL all Rwys  
TDZ/CL Rwys 17L, 17R, 35L, and 35R



CATEGORY	A	B	C	D
LPV DA		679/18	200 (200-1/2)	
LNAV/VNAV DA		901/40	422 (400-3/4)	
LNAV MDA	1000/24	521 (500-1/2)	1000/55	521 (500-1)
<b>C</b> CIRCLING	1040-1 539 (600-1)	1140-1 639 (700-1)	1160-1 3/4 659 (700-1 3/4)	1400-3 899 (900-3)

SE-1, 31 OCT 2024 to 28 NOV 2024

SE-1, 31 OCT 2024 to 28 NOV 2024