

(MFR1.LMT) 24305

AL-251 (FAA)

ROGUE VALLEY INTL/MEDFORD (MFR)
MEDFORD, OREGON

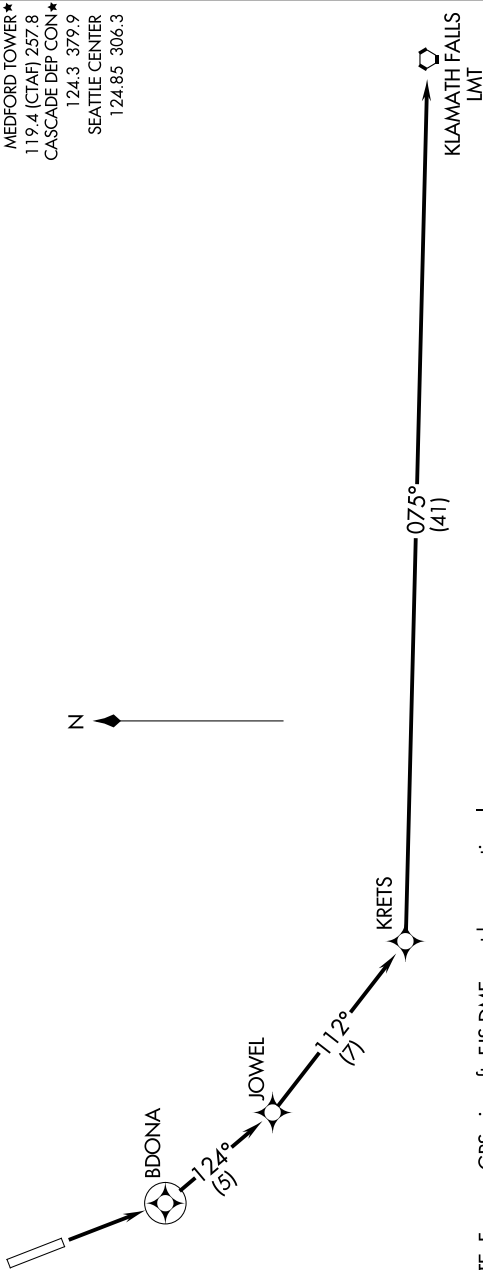
KLAMATH FALLS ONE DEPARTURE (RNAV)

NW-1, 31 OCT 2024 to 28 NOV 2024

RNAV 1 - DME/DME/IRU or GPS.
RADAR required for non-GPS equipped aircraft.

**TOP ALTITUDE:
ASSIGNED BY ATC**

ATIS 127.25
GND CON 121.8
MEDFORD TOWER* 119.4 (CTAF) 257.8
CASCADE DEP CON* 124.3 379.9
SEATTLE CENTER 124.85 306.3



NOTE: For non-GPS aircraft, F/S DME must be operational.

TAKEOFF MINIMUMS

Rwy 14: Standard with minimum climb of 425' per NM to 6400.

NOTE: Chart not to scale.

DEPARTURE ROUTE DESCRIPTION

TAKEOFF RUNWAY 14: Climb direct BDONA, then on track 124° to JOWEL, then on track 112° to KRETS, then on track 075° to LMT VORTAC. Expect RADAR vectors on course. Maintain assigned altitude. Expect filed altitude five minutes after departure.

KLAMATH FALLS ONE DEPARTURE (RNAV)

(MFR1.LMT) 29DEC22

MEDFORD, OREGON
ROGUE VALLEY INTL/MEDFORD (MFR)

NW-1, 31 OCT 2024 to 28 NOV 2024