

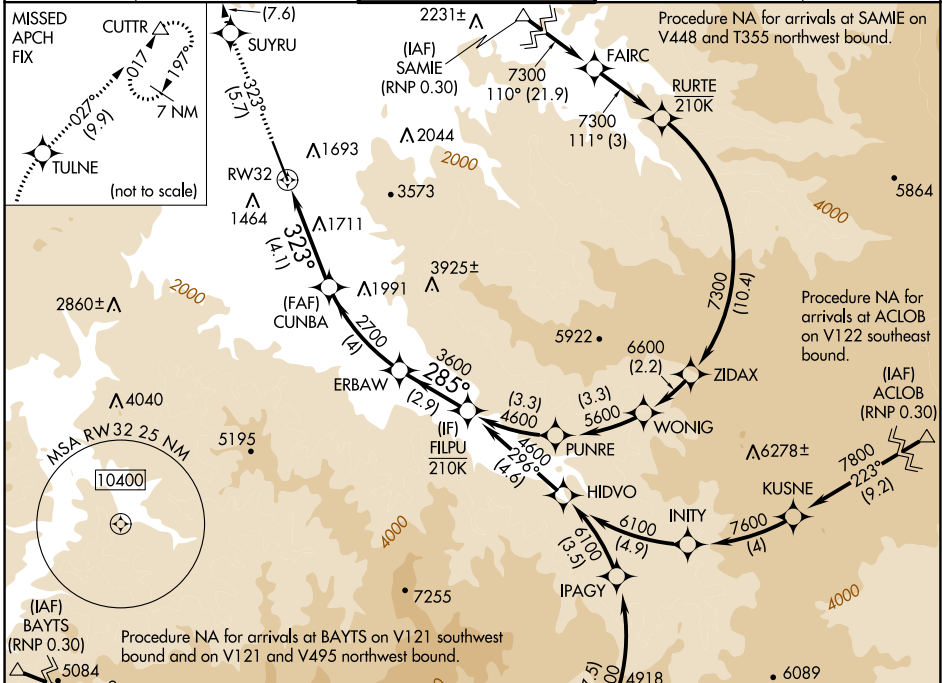
APP CRS	Rwy Idg	<b>8800</b>
<b>323°</b>	TDZE	<b>1335</b>
	Apt Elev	<b>1335</b>

# RNAV (RNP) Z RWY 32

ROGUE VALLEY INTL/MEDFORD (MFR)

RNP AR APCH-GPS.		MISSED APPROACH: Climb to 9000 on 323° to SUYRU, right turn to TULNE, then on track 027° to CUTTR and hold, continue climb-in-hold to 9000.	
For uncompensated Baro-VNAV systems, procedure NA below -6°C or above 54°C.			

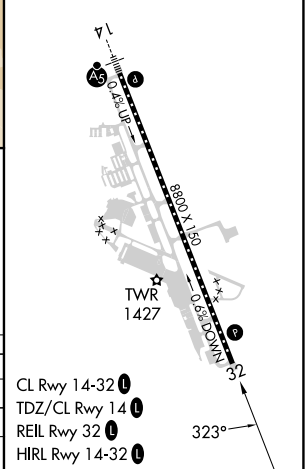
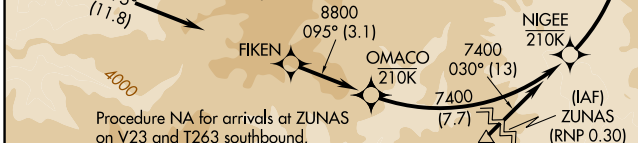
ATIS <b>127.25</b>	CASCADE APP CON * <b>124.3 379.9</b>	MEDFORD TOWER * <b>119.4 (CTAF) 0 257.8</b>	GND CON <b>121.8</b>	UNICOM <b>122.95</b>
-----------------------	---	--	-------------------------	-------------------------



NW-1, 31 OCT 2024 to 28 NOV 2024

NW-1, 31 OCT 2024 to 28 NOV 2024

ELEV 1335	TDZE 1335
-----------	-----------



9000	SUYRU	TULNE	CUTTR
↑ 323°			
		tr 027°	
	CUNBA	ERBAW	FILPU
	2700	3600	4600
		285°	
	RW32		GP 3.00°
			TCH 50

CATEGORY	A	B	C	D
RNP 0.10 DA	1683-1		348 (400-1)	
RNP 0.30 DA	1870-1½		535 (600-1½)	

**AUTHORIZATION REQUIRED**

- CL Rwy 14-32
- TDZ/CL Rwy 14
- REIL Rwy 32
- HIRL Rwy 14-32