

WAAS CH **45742** APP CRS **011°** Rwy Idg **9080**
 TDZE **704**
 W01A Apt Elev **728**

RNAV (GPS) RWY 1L
 GENERAL MITCHELL INTL (MKE)

RNP APCH - GPS

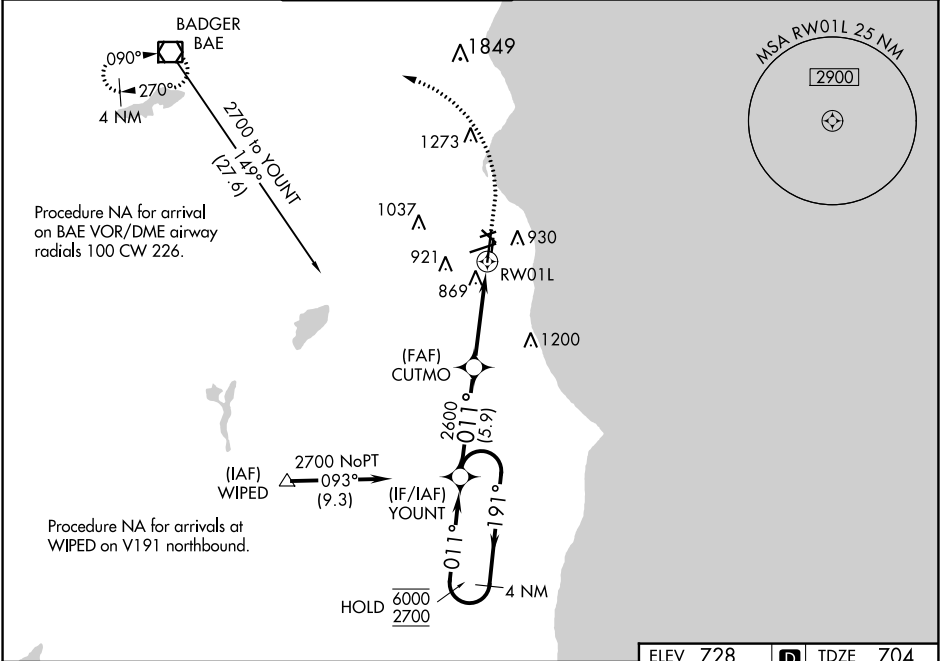
▼ For uncompensated Baro-VNAV systems, LNAV/VNAV NA below -19°C or above 54°C. For inop ALS increase LNAV/VNAV all Cats visibility to RVR 6000, increase LNAV Cat C/D visibility to RVR 6000.

ALSF-2

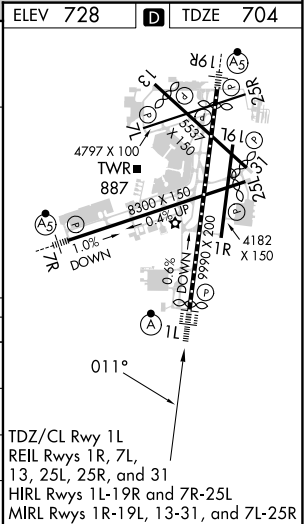


MISSED APPROACH: Climb to 1130 then climbing left turn to 2900 direct BAE VOR/DME and hold.

D-ATIS 126.4	MILWAUKEE APP CON 126.5 307.0	MILWAUKEE TOWER 124.575 269.05	GND CON 121.8 263.125	CLNC DEL 120.8	CPDLC
------------------------	---	--	---------------------------------	--------------------------	-------



VGSi and RNAV glidepath not coincident (VGSi Angle 3.00/TCH 72). 4 NM Holding Pattern YOUNT		1130	2900	BAE
6000 ← 191° 2700 011° →		CUTMO 2600 1.1 NM to RW01L RW01L		
GP 3.00° TCH 56		5.9 NM 4.7 NM 1.1 NM		
CATEGORY	A	B	C	D
LPV DA	904/18		200 (200-½)	
LNAV/VNAV DA	1120/40		416 (400-¾)	
LNAV MDA	1120/24	416 (400-½)	1120/40	416 (400-¾)
CIRCLING	1240-1	512 (600-1)	1240-1½ 512 (600-1½)	1360-2 632 (700-2)



EC-3, 31 OCT 2024 to 28 NOV 2024

EC-3, 31 OCT 2024 to 28 NOV 2024