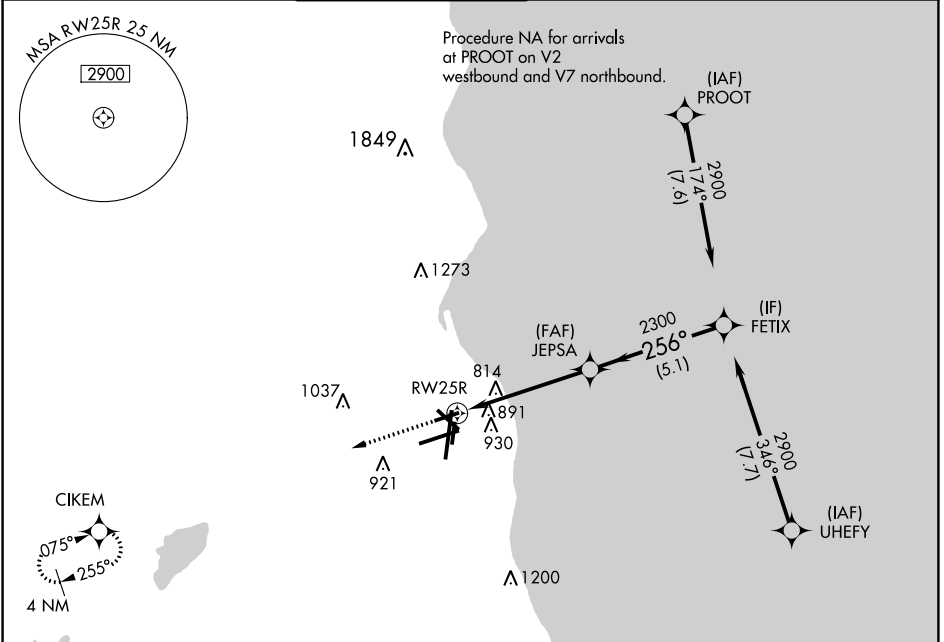


WAAS CH 77543 W25B	APP CRS 256°	Rwy ldg TDZE Apt Elev 4797 675 729
--	------------------------	--

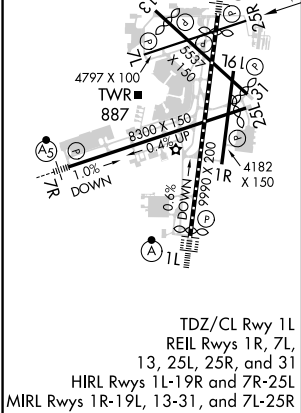
RNAV (GPS) RWY 25R

GENERAL MITCHELL INTL (MKE)

RNP APCH.		MISSED APPROACH: Climb to 2900 direct CIKEM and hold.			
▼ Rwy 25R helicopter visibility reduction below 3/4 SM NA.					
D-ATIS 126.4	MILWAUKEE APP CON 126.5 307.0	MILWAUKEE TOWER 124.575 269.05	GND CON 121.8 263.125	CLNC DEL 120.8	CPDLC



ELEV 729	D	TDZE 675
----------	----------	----------



	2900	CIKEM		
			JEPSA	FETIX
			2300	2900
			256°	
			1.1 NM	3.9 NM
			5.1 NM	
CATEGORY	A	B	C	D
LP MDA	1080-1	405 (400-1)	1080-1½	405 (400-1½)
LNAV MDA	1160-1	485 (500-1)	1160-1¾	485 (500-1¾)
C CIRCLING	1240-1	511 (600-1)	1240-1½	1360-2
			511 (600-1½)	631 (700-2)

EC-3, 31 OCT 2024 to 28 NOV 2024

EC-3, 31 OCT 2024 to 28 NOV 2024