

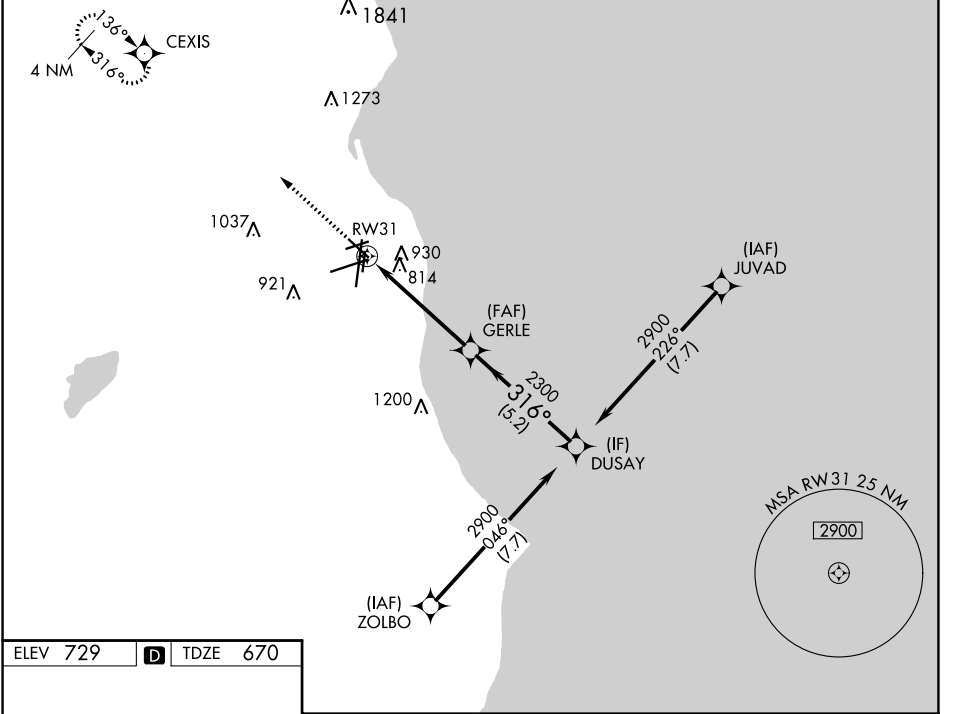
WAAS CH 48842 W31A	APP CRS 316°	Rwy ldg TDZE Apt Elev	5152 670 729
--	------------------------	-----------------------------	---

RNAV (GPS) RWY 31

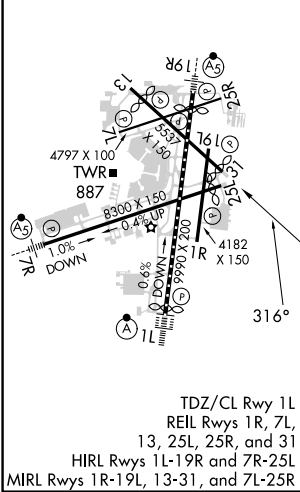
GENERAL MITCHELL INTL (MKE)

RNP APCH.	MISSED APPROACH: Climb to 2900 direct CEXIS and hold.
▼ Rwy 31 helicopter visibility reduction below 3/4 SM NA. For uncompensated Baro-VNAV systems, LNAV/VNAV NA below -19°C or above 54°C.	

D-ATIS 126.4	MILWAUKEE APP CON 126.5 307.0	MILWAUKEE TOWER 124.575 269.05	GND CON 121.8 263.125	CLNC DEL 120.8	CPDLC
------------------------	---	--	---------------------------------	--------------------------	-------



ELEV 729	D	TDZE 670
----------	----------	----------



CATEGORY	A	B	C	D
LPV DA		948-1	278 (300-1)	
LNAV/VNAV DA		1092-1¼	422 (400-1¼)	
LNAV MDA	1080-1	410 (400-1)	1080-1½	410 (400-1½)
C CIRCLING	1240-1	511 (600-1)	1240-1½	1360-2 631 (700-2)

EC-3, 31 OCT 2024 to 28 NOV 2024

EC-3, 31 OCT 2024 to 28 NOV 2024