

(ORSKY3.ORSKY) 23334
ORSKY THREE DEPARTURE

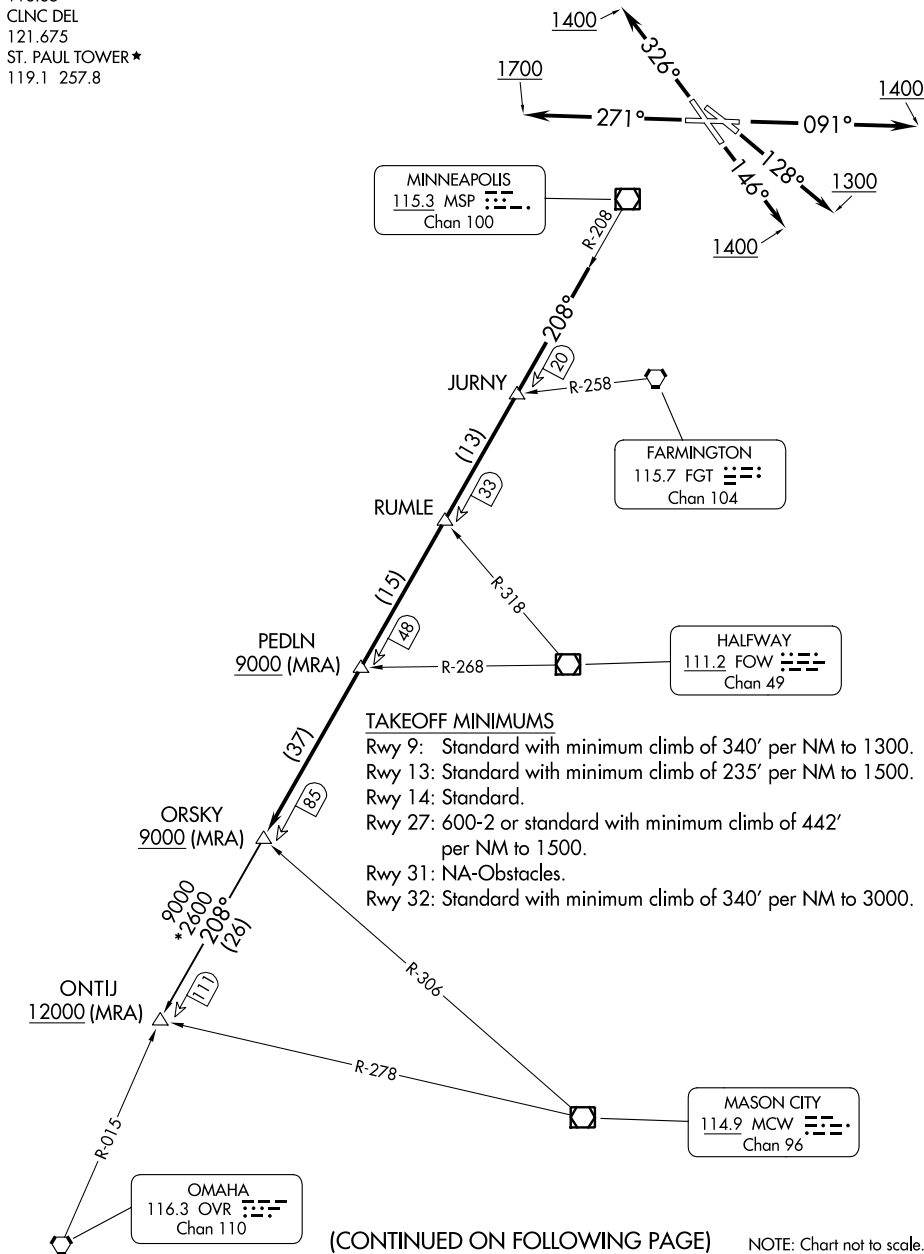
AL-263 (FAA)

ST PAUL DOWNTOWN HOLMAN FLD (STP)
 ST PAUL, MINNESOTA

MINNEAPOLIS DEP CON
 121.2 335.65
 ATIS
 118.35
 CLNC DEL
 121.675
 ST. PAUL TOWER★
 119.1 257.8

RADAR required.

**TOP ALTITUDE:
 ASSIGNED BY ATC**



TAKEOFF MINIMUMS

- Rwy 9: Standard with minimum climb of 340' per NM to 1300.
- Rwy 13: Standard with minimum climb of 235' per NM to 1500.
- Rwy 14: Standard.
- Rwy 27: 600-2 or standard with minimum climb of 442' per NM to 1500.
- Rwy 31: NA-Obstacles.
- Rwy 32: Standard with minimum climb of 340' per NM to 3000.

(CONTINUED ON FOLLOWING PAGE)

NOTE: Chart not to scale.

NC-1, 31 OCT 2024 to 28 NOV 2024

NC-1, 31 OCT 2024 to 28 NOV 2024

ORSKY THREE DEPARTURE
 (ORSKY3.ORSKY) 08SEP22

ST PAUL, MINNESOTA
 ST PAUL DOWNTOWN HOLMAN FLD (STP)



DEPARTURE ROUTE DESCRIPTION

TAKEOFF RUNWAY 9: Climb on heading 091° to 1400 for RADAR vectors to assigned fix on MSP R-208, then on depicted route to ORSKY. Thence

TAKEOFF RUNWAY 13: Climb on heading 128° to 1300 for RADAR vectors to assigned fix on MSP R-208, then on depicted route to ORSKY. Thence

TAKEOFF RUNWAY 14: Climb on heading 146° to 1400 for RADAR vectors to assigned fix on MSP R-208, then on depicted route to ORSKY. Thence

TAKEOFF RUNWAY 27: Climb on heading 271° to 1700 for RADAR vectors to assigned fix on MSP R-208, then on depicted route to ORSKY. Thence

TAKEOFF RUNWAY 32: Climb on heading 326° to 1400 for RADAR vectors to assigned fix on MSP R-208, then on depicted route to ORSKY. Thence

. . . .on transition or assigned route. Expect filed altitude 10 minutes after departure.

ONTIJ TRANSITION (ORSKY3.ONTIJ): From over ORSKY INT on MSP R-208 to ONTIJ INT.

NC-1, 31 OCT 2024 to 28 NOV 2024

NC-1, 31 OCT 2024 to 28 NOV 2024