

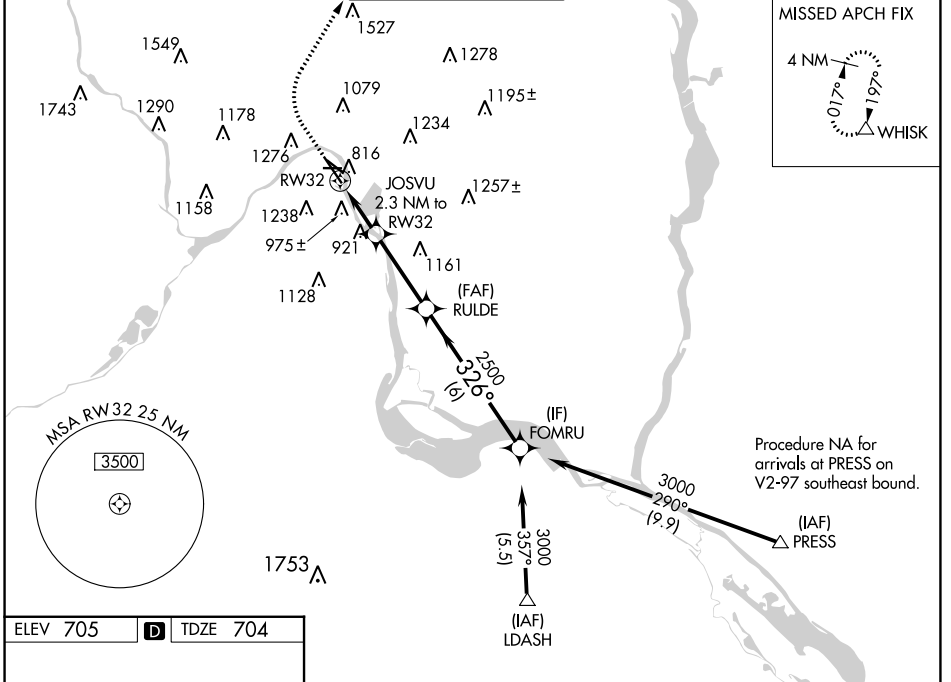
WAAS CH <b>50123</b> <b>W32A</b>	APP CRS <b>326°</b>	Rwy Idg TDZE Apt Elev	<b>6109</b> <b>704</b> <b>705</b>
--	------------------------	-----------------------------	---

# RNAV (GPS) RWY 32

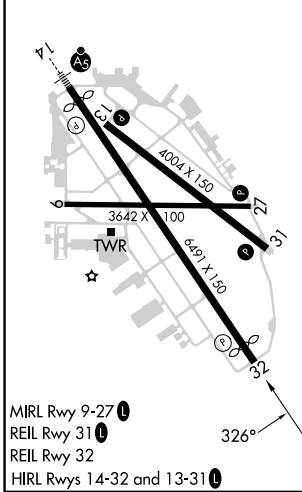
ST PAUL DOWNTOWN HOLMAN FLD (STP)

RNP APCH - GPS.		<p>▼ Rwy 32 helicopter visibility reduction below ¾ SM NA.                  ▲ For uncompensated Baro-VNAV systems, LNAV/VNAV NA below -30°C                  ☳ -30°C</p>		<p>MISSED APPROACH: Climb to 1400 then climbing right turn to 3000 direct WHISK and hold.</p>	
-----------------	--	--	--	---	--

ATIS <b>118.35</b>	MINNEAPOLIS APP CON <b>121.2 335.65</b>	ST. PAUL TOWER ★ <b>119.1(CTAF) 257.8</b>	GND CON <b>121.675</b>	CLNC DEL <b>121.675</b>	UNICOM <b>122.95</b>
-----------------------	--	--	---------------------------	----------------------------	-------------------------



ELEV 705	<b>D</b>	TDZE 704
----------	----------	----------



1400	3000	WHISK	JOSVU 2.3 NM to RW32		RULDE	FOMRU
↑	↷	△	1.6 NM to RW32	1460	2500	3000
			1.6 NM	0.7 NM	3.2 NM	6 NM
GP 3.00°						TCH 40
CATEGORY	A	B	C	D		
LPV DA	1031/50		327 (400-1)			
LNAV/VNAV DA	1258-1½		554 (600-1½)			
LNAV MDA	1240/55	536 (600-1)	1240-1½	536 (600-1½)		
CIRCLING	1580-1¼	875 (900-1¼)	1580-2½	875 (900-2½)	1580-2¾ 875 (900-2¾)	

NC-1, 31 OCT 2024 to 28 NOV 2024

NC-1, 31 OCT 2024 to 28 NOV 2024