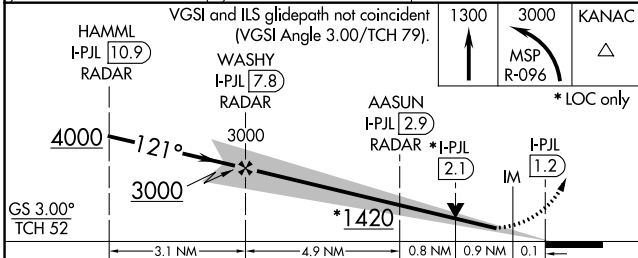
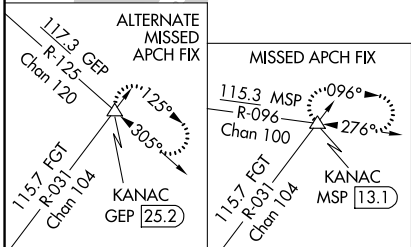
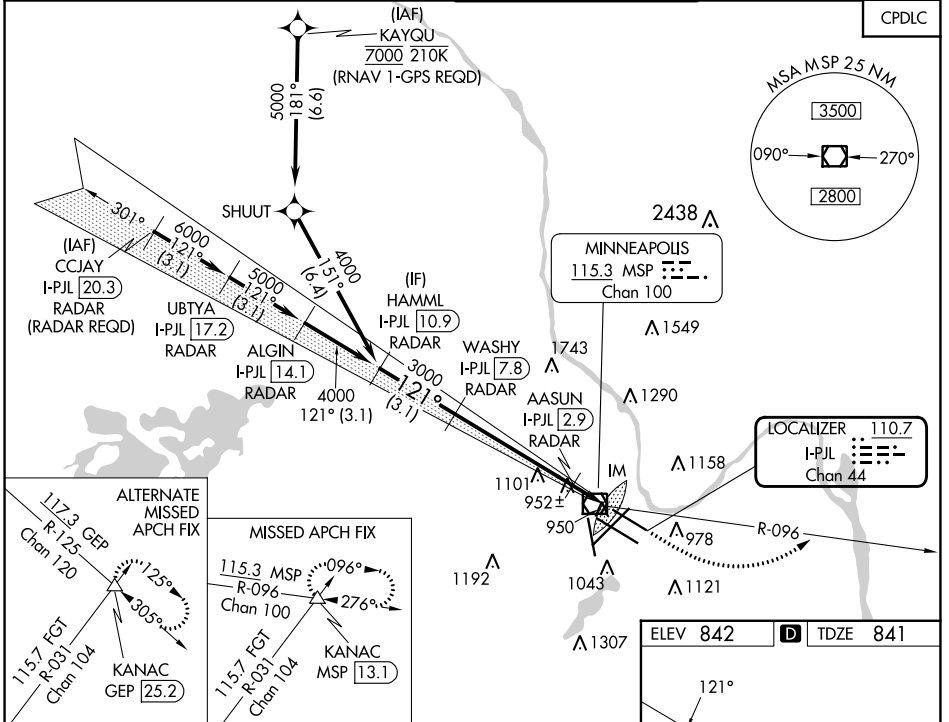


LOC/DME I-PJL 110.7 Chan 44	APP CRS 121°	Rwy Idg TDZE Apt Elev	7620 841 842
---	------------------------	-----------------------------	---

ILS or LOC RWY 12L

MINNEAPOLIS-ST PAUL INTL/WOLD-CHAMBERLAIN (MSP)

⚠ Simultaneous approach authorized with Rwy 12R. For inop ALS, increase S-ILS 12L Cat E visibility to RVR 4000, S-LOC 12L Cat C/D/E visibility to RVR 5500. DME or RADAR required.	ALS F-2	MISSED APPROACH: Climb to 1300, then climbing left turn to 3000 on MSP VOR/DME R-096 to KANAC INT/MSP 13.1 DME and hold.		
	ARR 135.35 239.275	MINNEAPOLIS APP CON 118.725 335.65 (Rwy 35) 119.3 335.65 (12L-30R, 4-22, 17)	MINNEAPOLIS TOWER 123.675 273.55 (17-35) 123.95 273.55 (12L-30R) 126.7 273.55 (12R-30L, 4-22)	GND CON N 121.8 348.6 S 121.9 348.6 W 127.925 348.6



ELEV 842	TDZE 841
HIRL all Rwys REIL Rwy 17	
TDZ/CL Rwys 12L, 12R, 30L, and 35	
FAF to MAP 6.6 NM	
Knots	60 90 120 150 180
Min:Sec	6:36 4:24 3:18 2:38 2:12

NC-1, 31 OCT 2024 to 28 NOV 2024

NC-1, 31 OCT 2024 to 28 NOV 2024