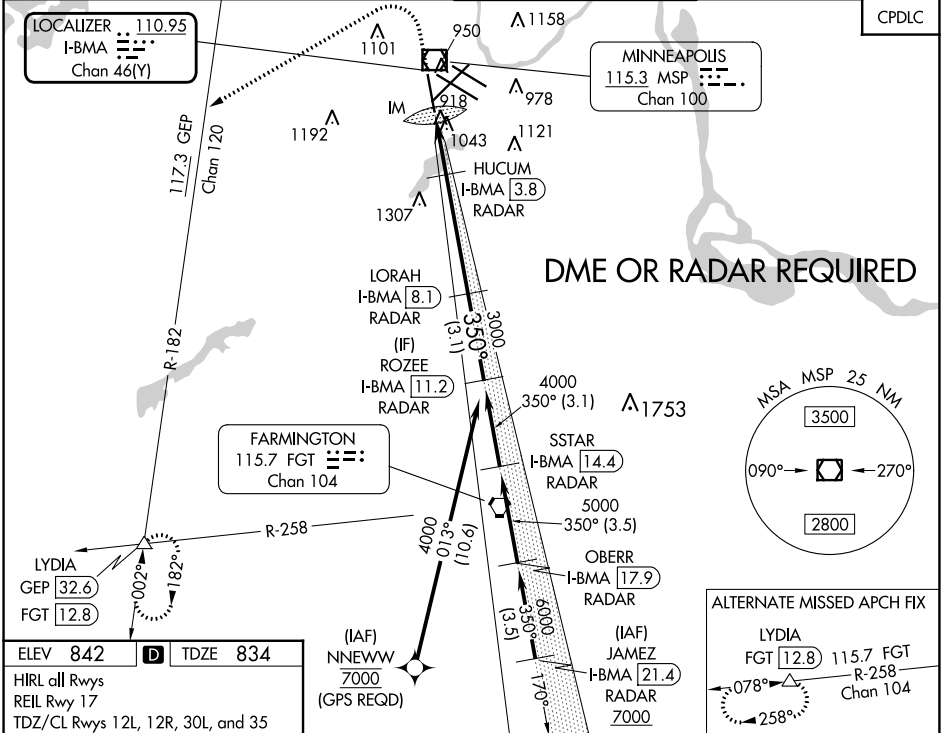


|  |                        |                             |   |
|--|------------------------|-----------------------------|---|
| LOC/DME I-BMA<br><b>110.95</b><br>Chan <b>46 (Y)</b> | APP CRS<br><b>350°</b> | Rwy ldg<br>TDZE<br>Apt Elev | <b>8000</b><br><b>834</b><br><b>842</b> |
|--|------------------------|-----------------------------|---|

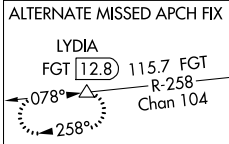
# ILS Z or LOC RWY 35

## MINNEAPOLIS-ST PAUL INTL/WOLD-CHAMBERLAIN (MSP)

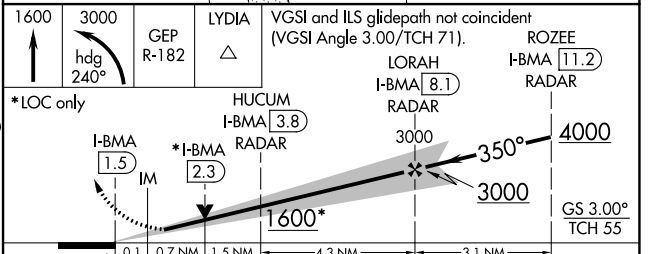
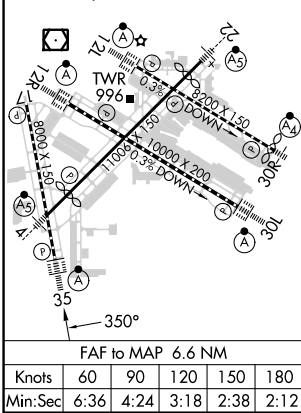
|  |   |  |   |   |
|--|---|--|---|---|
| <b>▼</b> DME or RADAR required. For inop ALS, increase S-ILS 35 Cat E visibility to RVR 4000 and S-LOC 35 Cats C/D/E visibility to RVR 5500.<br><b>▲</b> | ALS F-2   | MISSED APPROACH: Climb to 1600 then climbing left turn to 3000 on heading 240° and on GEP VORTAC R-182 to LYDIA INT/GEP 32.6 DME and hold. |   |   |
|  | D-ATIS<br>ARR <b>135.35 239.275</b><br>DEP <b>120.8</b> | MINNEAPOLIS APP CON<br><b>118.725 335.65</b> (Rwy 35)<br><b>119.3 335.65</b> (12L-30R, 4-22, 17)<br><b>126.95 335.65</b> (12R-30L)         | MINNEAPOLIS TOWER<br><b>123.675 273.55</b> (17-35)<br><b>123.95 273.55</b> (12L-30R)<br><b>126.7 273.55</b> (12R-30L, 4-22) | GND CON<br><b>N 121.8 348.6</b><br><b>S 121.9 348.6</b><br><b>W 127.925 348.6</b> |



**DME OR RADAR REQUIRED**



|   |          |          |
|---|----------|----------|
| ELEV 842  | <b>D</b> | TDZE 834 |
| HIRL all Rwys<br>REIL Rwy 17<br>TDZ/CL Rwys 12L, 12R, 30L, and 35 |          |          |



|                   |                     |             |                     |              |              |
|-------------------|---------------------|-------------|---------------------|--------------|--------------|
| CATEGORY          | A                   | B           | C                   | D            | E            |
| S-ILS 35          | 1034/18 200 (200-½) |             |                     |              |              |
| S-LOC 35          | 1180/24             | 346 (400-½) | 1180/30 346 (400-¾) |              |              |
| <b>C</b> CIRCLING | 1360-1              | 518 (600-1) | 1460-1¾             | 1660-2¾      | 1800-3       |
|                   |                     |             | 618 (700-1¾)        | 818 (900-2¾) | 958 (1000-3) |