

MINNEAPOLIS APP CON  
126.35 335.5  
D-ATIS ARR  
135.35 239.275

(KKILR.KKILR3) 17173  
MINNEAPOLIS-ST PAUL INTL/WOLD-CHAMBERLAIN (MSP)  
KKILR THREE ARRIVAL (RNAV) Transition Routes AL-264 (FAA) MINNEAPOLIS, MINNESOTA

MINNEAPOLIS, MINNESOTA  
KKILR THREE ARRIVAL (RNAV) Transition Routes  
(KKILR.KKILR3) 051AN17

See following page  
for Arrival Routes.

KKILR  
12000 280K

4000  
\*2600  
291°  
(14)

CMAAC  
14000 280K

8000  
\*2600  
292°  
(24)  
112°  
10 NM

HENDR  
FL240

10000  
\*2700  
292°  
(32)

ZZING  
FL290

10000  
\*2600  
293°  
(11)

10000  
\*2500  
309°  
(26)  
129°  
10 NM

KBULL

ROBBY

10000  
\*2500  
308°  
(30)

BEERI

129°  
10 NM

10000  
\*2500  
309°  
(63)

KAMMA



NOTE: Expect "descend via" clearance and runway transition assignment by Center.  
Approach will assign landing Rwy.

NOTE: Turbojet aircraft descend via Mach number until intercepting 280K.  
Maintain 280K until slowed by the STAR, or assigned by ATC.

NOTE: DME/DME/IRU or GPS required.

NOTE: For Turbojet aircraft only.

NOTE: RADAR required.

NOTE: RNAV 1.

CMAAC TRANSITION (CMAAC.KKILR3)

HENDR TRANSITION (HENDR.KKILR3)

KAMMA TRANSITION (KAMMA.KKILR3)

KBULL TRANSITION (KBULL.KKILR3)

(CONTINUED ON FOLLOWING PAGE)

NOTE: Chart not to scale.

(KKILR, KKILR3) 05/AN17  
**KKILR THREE ARRIVAL (RNAV)**  
 Arrival Routes  
 MINNEAPOLIS-ST PAUL INTL/WOLD-CHAMBERLAIN (MSP)  
 MINNEAPOLIS, MINNESOTA

MINNEAPOLIS APP CON  
 126.35 335.5  
 D-ATIS ARR  
 135.35 239.275



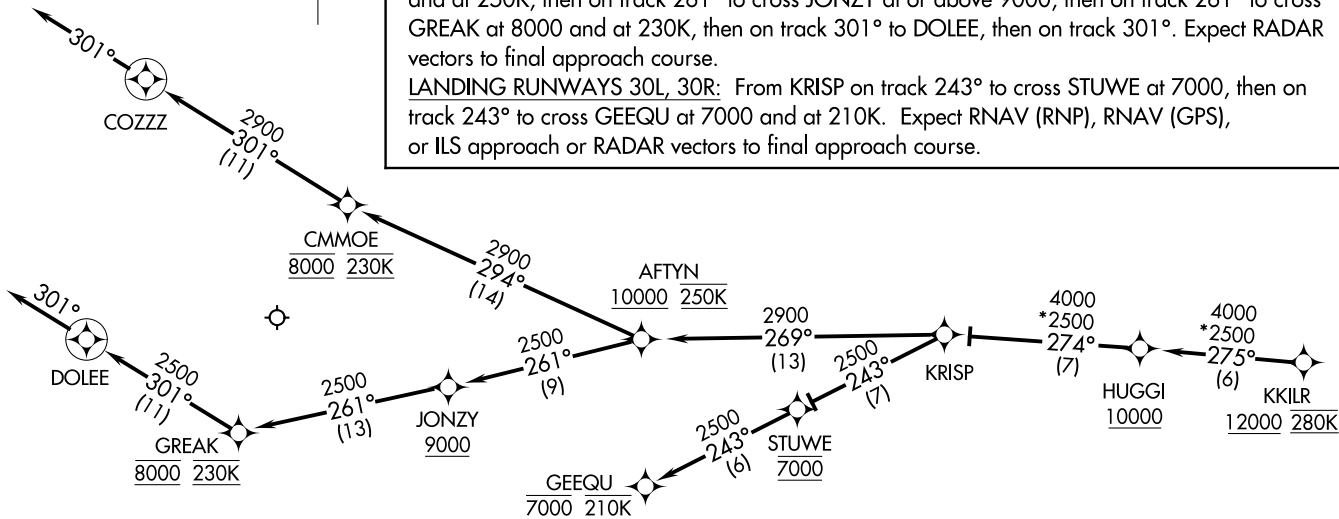
### ARRIVAL ROUTE DESCRIPTION

From KKILR on track 275° to cross HUGGI at or above 10000, then on track 274° to KRISP.

LANDING RUNWAYS 4, 12L, 17, 22: From KRISP on track 269° to cross AFTYN at or above 10000 and at 250K, then on track 294° to cross CMMOE at 8000 and at 230K, then on track 301° to COZZZ, then on track 301°. Expect RADAR vectors to final approach course.

LANDING RUNWAYS 12R, 35: From KRISP on track 269° to cross AFTYN at or above 10000 and at 250K, then on track 261° to cross JONZY at or above 9000, then on track 261° to cross GREAK at 8000 and at 230K, then on track 301° to DOLEE, then on track 301°. Expect RADAR vectors to final approach course.

LANDING RUNWAYS 30L, 30R: From KRISP on track 243° to cross STUWE at 7000, then on track 243° to cross GEEQU at 7000 and at 210K. Expect RNAV (RNP), RNAV (GPS), or ILS approach or RADAR vectors to final approach course.



NOTE: Expect "descend via" clearance and runway transition assignment by Center.  
 Approach will assign landing Rwy.

NOTE: Turbojet aircraft descend via Mach number until intercepting 280K. Maintain 280K until slowed by the STAR, or assigned by ATC.

NOTE: DME/DME/IRU or GPS required.

NOTE: For Turbojet aircraft only.

NOTE: RADAR required.

NOTE: RNAV 1.

NOTE: Chart not to scale.

(KKILR, KKILR3) 17173  
**KKILR THREE ARRIVAL (RNAV)**  
 Arrival Routes  
 MINNEAPOLIS-ST PAUL INTL/WOLD-CHAMBERLAIN (MSP)  
 Arrival Routes  
 AL-264 (FAA)  
 MINNEAPOLIS, MINNESOTA