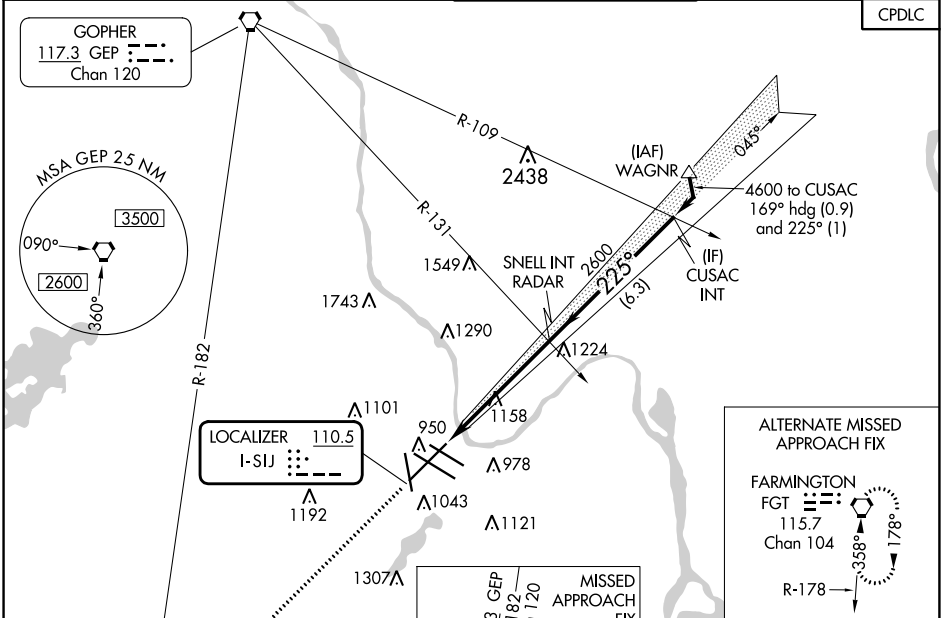


LOC I-SIJ 110.5	APP CRS 225°	Rwy ldg 10006 TDZE 828 Apt Elev 842
---------------------------	------------------------	--

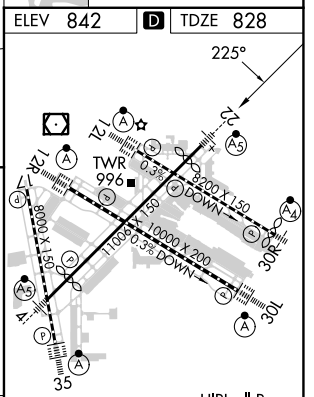
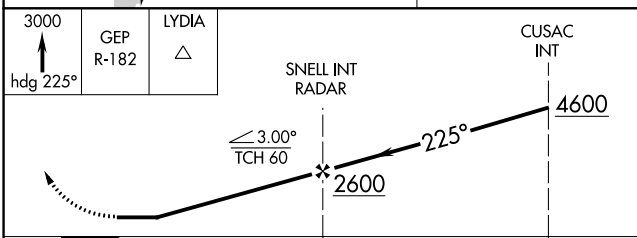
LOC RWY 22

MINNEAPOLIS-ST PAUL INTL/WOLD-CHAMBERLAIN (MSP)

	Rwy 22 helicopter visibility reduction below RVR 4000 NA. For inop ALS, increase S-22 Cat A and B visibility to RVR 5500, and Cat E visibility to 1 3/4 SM.	MALS R 	MISSED APPROACH: Climb to 3000 on heading 225° and GEP VORTAC R-182 to LYDIA INT/GEP 32.6 DME and hold.	CLNC DEL 133.2 CPDLC
	D-ATIS ARR 135.35 239.275 DEP 120.8	MINNEAPOLIS APP CON 118.725 335.65 (Rwy 35) 119.3 335.65 (12L-30R, 4-22, 17) 126.95 335.65 (12R-30L)	MINNEAPOLIS TOWER 123.675 273.55 (17-35) 123.95 273.55 (12L-30R) 126.7 273.55 (12R-30L, 4-22)	



ELEV 842	D TDZE 828
----------	-------------------



CATEGORY	A	B	C	D	E	TDZ/CL Rwys 12L, 12R, 30L, and 35 FAF to MAP 5.4 NM
S-22	1420/40	592 (600-3/4)	1420-1 1/4	592 (600-1 1/4)		
C CIRCLING	1420-1	578 (600-1)	1460-1 3/4 618 (700-1 3/4)	1620-2 1/2 778 (800-2 1/2)	1800-3 958 (1000-3)	HIRL all Rwys REIL Rwy 17 Knots: 60 90 120 150 180 Min:Sec: 5:24 3:36 2:42 2:10 1:48

LOC RWY 22

NC-1, 31 OCT 2024 to 28 NOV 2024

NC-1, 31 OCT 2024 to 28 NOV 2024