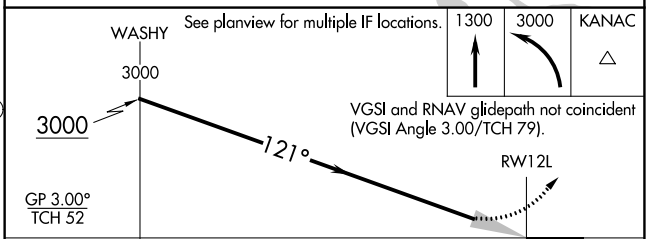
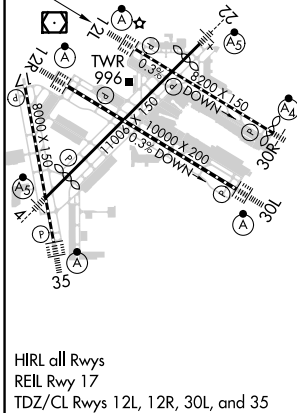
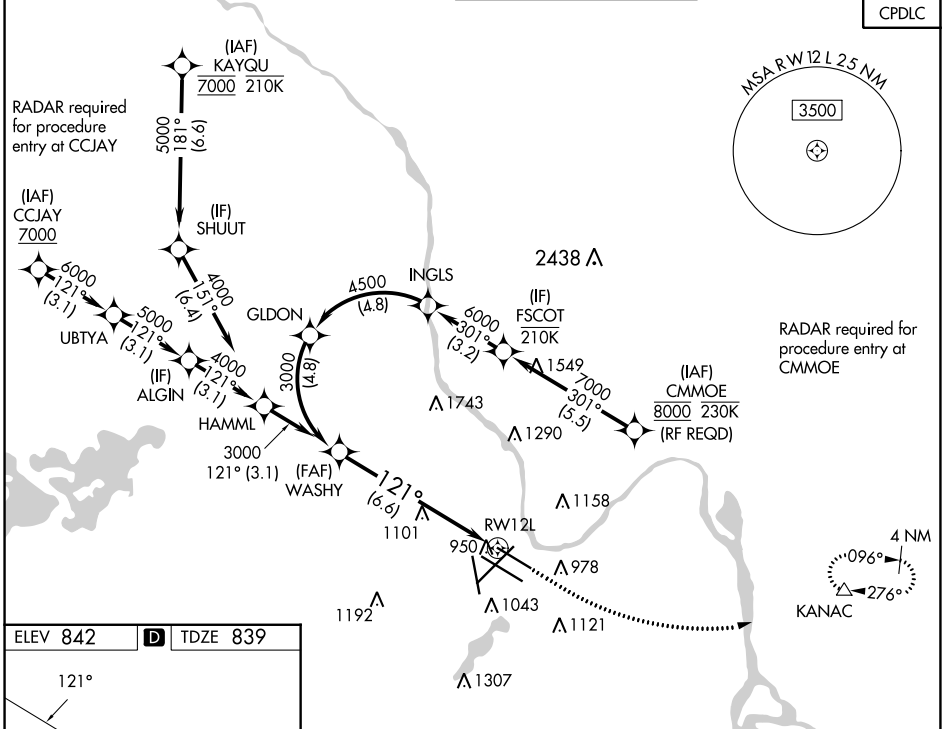


APP CRS	Rwy Idg	7620
121°	TDZE	839
	Apt Elev	842

RNAV (RNP) Y RWY 12L

MINNEAPOLIS-ST PAUL INTL/WOLD-CHAMBERLAIN (MSP)

▽ For uncompensated Baro-VNAV systems, procedure NA below -20°C (-4°F) or above 54°C (130°F). GPS required.	MINNEAPOLIS APP CON ARR 135.35 239.275 DEP 120.8		MINNEAPOLIS TOWER 123.675 273.55 (17-35) 123.95 273.55 (12L-30R) 126.7 273.55 (12R-30L, 4-22)		GND CON N 121.8 348.6 S 121.9 348.6 W 127.925 348.6	CLNC DEL 133.2
	(IALF) KAYQU 7000 210K		(IF) SHUUT 4000 (6.4)		(IF) FSCOT 210K	
	(IALF) CCJAY 7000		(IF) ALGIN 4000 (3.1)		(IALF) CMMOE 8000 230K (RF REQD)	



GP 3.00° TCH 52	6.6 NM			
CATEGORY	A	B	C	D
RNP 0.15 DA	1150/24 311 (400-½)			
RNP 0.30 DA	1241/45 402 (400-⅔)			

HIRL all Rwys
 REIL Rwy 17
 TDZ/CL Rwys 12L, 12R, 30L, and 35

NC-1, 31 OCT 2024 to 28 NOV 2024

NC-1, 31 OCT 2024 to 28 NOV 2024