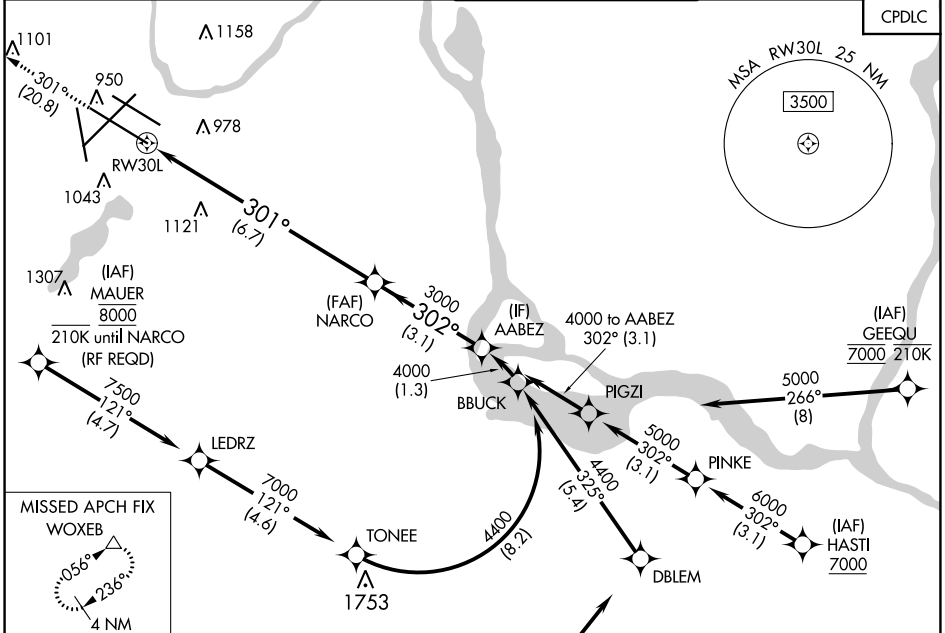


APP CRS	Rwy Idg	10000
301°	TDZE	823
	Apt Elev	842

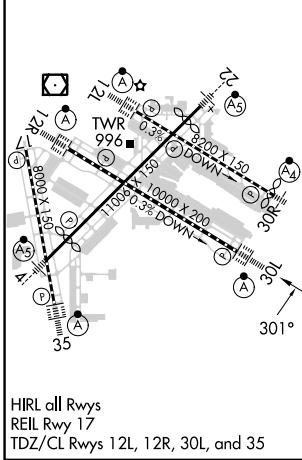
RNAV (RNP) Y RWY 30L

MINNEAPOLIS-ST PAUL INTL/WOLD-CHAMBERLAIN (MSP)

▽ For uncompensated Baro-VNAV systems, procedure NA below -19°C (-2°F) or above 54°C (130°F). GPS required. Simultaneous approaches authorized with Rwy 30R and ILS V RWY 35 (CONVERGING).	ALSF-2 	MISSED APPROACH: Climb to 3000 on track 301° to WOXEB and hold.			
		D-ATIS	MINNEAPOLIS APP CON	MINNEAPOLIS TOWER	GND CON
ARR 135.35	239.275	118.725 335.65 (Rwy 35)	123.675 273.55 (17-35)	N 121.8 348.6	133.2
DEP 120.8		119.3 335.65 (12L-30R, 4-22, 17)	123.95 273.55 (12L-30R)	S 121.9 348.6	
		126.95 335.65 (12R-30L)	126.7 273.55 (12R-30L, 4-22)	W 127.925 348.6	



ELEV 842	D	TDZE 823
-----------------	----------	-----------------



3000	WOXEB	VGS1 and RNAV glidepath not coincident (VGS1 Angle 3.00°/TCH 78°).		
↑	△	NARCO	AABEZ	
↑		3000	4000	
↑		301°	302°	
		6.7 NM	3.1 NM	GP 3.00° TCH 55
CATEGORY	A	B	C	D
RNP 0.30 DA	1150/30 327 (400-%)			
AUTHORIZATION REQUIRED				

NC-1, 31 OCT 2024 to 28 NOV 2024

NC-1, 31 OCT 2024 to 28 NOV 2024