

APP CRS	Rwy Idg	<b>8000</b>
<b>350°</b>	TDZE	<b>834</b>
	Apt Elev	<b>842</b>

# RNAV (RNP) Y RWY 35

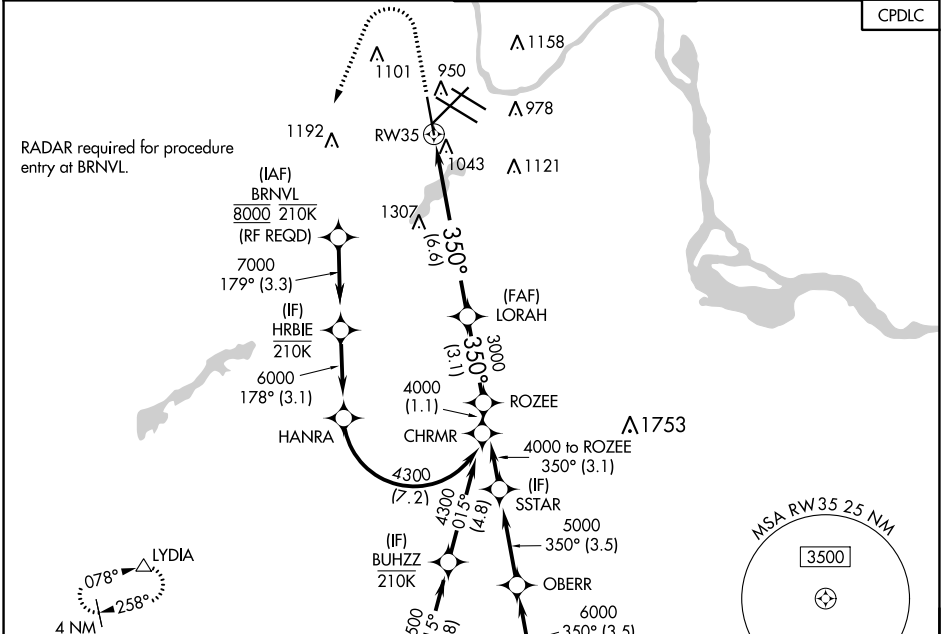
MINNEAPOLIS-ST PAUL INTL/WOLD-CHAMBERLAIN (MSP)

**▼** For uncompensated Baro-VNAV systems, procedure NA below -19°C (-2°F) or above 54°C (130°F). For inop ALSF, increase RNP 0.30 all Cats visibility to 1½ miles. GPS required.



**MISSED APPROACH:** Climb to 1300 then climbing left turn to 3000 direct LYDIA and hold.

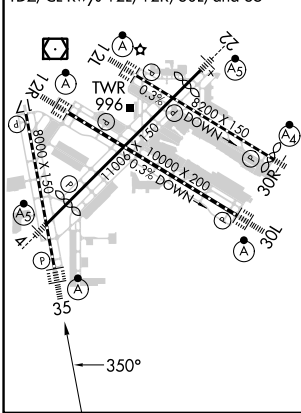
D-ATIS ARR <b>135.35</b> 239.275 DEP <b>120.8</b>	MINNEAPOLIS APP CON <b>118.725 335.65</b> (Rwy 35) <b>119.3 335.65</b> (12L-30R, 4-22, 17) <b>126.95 335.65</b> (12R-30L)	MINNEAPOLIS TOWER <b>123.675 273.55</b> (17-35) <b>123.95 273.55</b> (12L-30R) <b>126.7 273.55</b> (12R-30L, 4-22)	GND CON <b>N 121.8 348.6</b> <b>S 121.9 348.6</b> <b>W 127.925 348.6</b>	CLNC DEL <b>133.2</b>
---	--	---	---	--------------------------



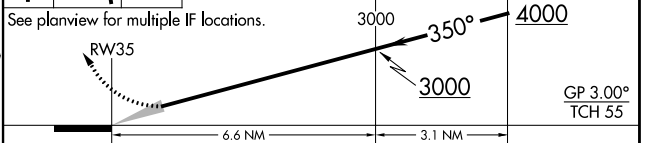
NC-1, 31 OCT 2024 to 28 NOV 2024

NC-1, 31 OCT 2024 to 28 NOV 2024

ELEV <b>842</b>	<b>D</b>	TDZE <b>834</b>
HIRL all Rwys		
REIL Rwy 17		
TDZ/CL Rwys 12L, 12R, 30L, and 35		



1300 3000 LYDIA VGS1 and RNAV glidepath not coincident (VGS1 Angle 3.00/TCH 71). ROZEE



GP 3.00°	TCH 55
6.6 NM	3.1 NM
CATEGORY	A B C D
RNP 0.11 DA	1213/40 379 (400-¾)
RNP 0.16 DA	1291/60 457 (500-1¼)
RNP 0.30 DA	1345-1¼ 511 (600-1¼)

## AUTHORIZATION REQUIRED

# RNAV (RNP) Y RWY 35