

MONTGOMERY, ALABAMA

HI-ILS Y or LOC Y RWY 10

LOC I-MGM 109.9	APCH CRS 097°	Rwy Idg 9020 TDZE 219 Arpt Elev 221
---------------------------	-------------------------	--

[USAF]

MONTGOMERY RGNL (DANNELLY FLD) (KMGM)

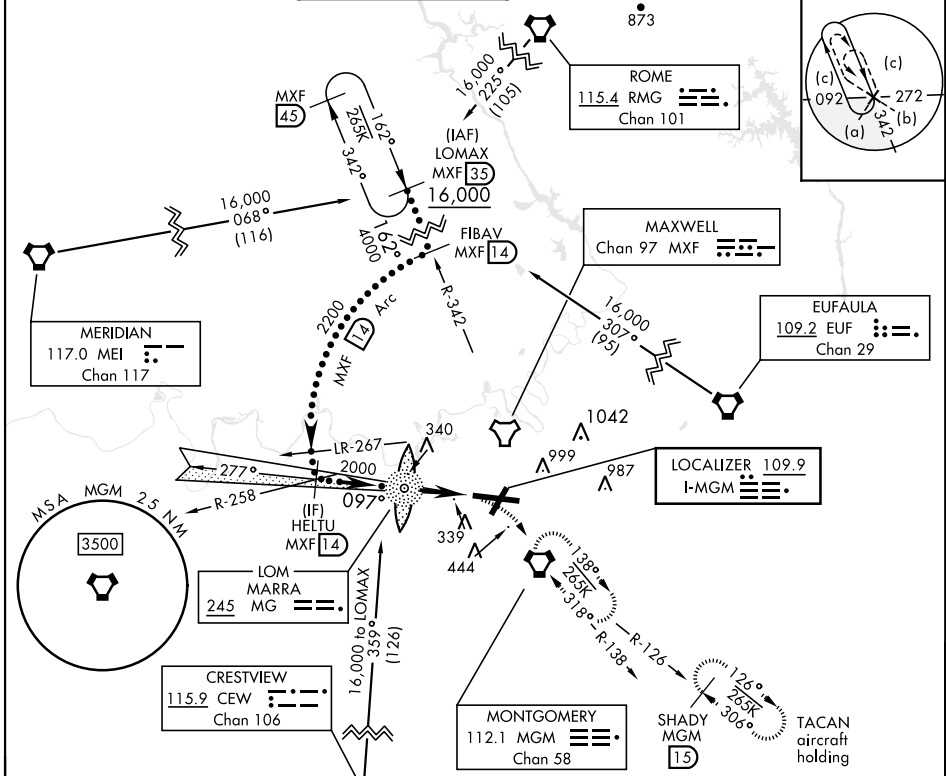
DME required. ADF and DME required for LOC only.

- ▼ *When ALS inop, increase RVR to 40.
- **When ALS inop, increase vis to 1½ miles.
- ▲ ***Circling not authorized for CAT E, N of Rwy 10-28.

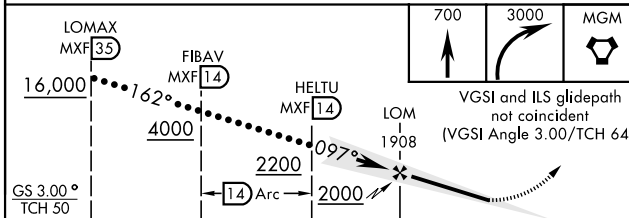


MISSED APPROACH: Climb to 700 then climbing right turn to 3000 direct MGM VORTAC and hold, continue climb-in-hold to 3000.
TACAN aircraft continue to 3500 via MGM R-126 to SHADY and hold southeast, right turn, 306° inbound.

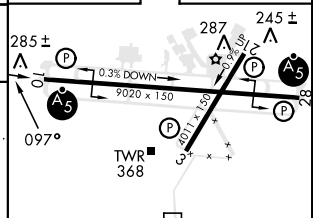
ATIS ★ 120.675	APP CON 124.0 363.025	DANNELLY TOWER★ 119.7(CTAF) 0360.85	GND CON 121.7 348.6	CINC DEL 118.3 270.3	UNICOM 112.95
--------------------------	---------------------------------	---	-------------------------------	--------------------------------	-------------------------



EMERG SAFE ALT 100 NM
5000 FROM "MGM" VORTAC



ELEV 221	TDZE 219
----------	----------



CATEGORY	C	D	E
S-ILS 10*	419/24	200	(200-½)
S-LOC 10**	660/45	441	(500-¾)
*** CIRCLING	800-1½ 579 (600-1½)	860-2 639 (700-2)	860-2¼ 639 (700-2¼)

FAF to MAP 5.2 NM					
Knots	120	140	160	180	200
Min:Sec	2:36	2:14	1:57	1:44	1:34

MONTGOMERY, ALABAMA

32°18'N-86°24'W

MONTGOMERY RGNL (DANNELLY FLD) (KMGM)

Amdt 9D 16MAY24

HI-ILS Y or LOC Y RWY 10

SE-4, 31 OCT 2024 to 28 NOV 2024

SE-4, 31 OCT 2024 to 28 NOV 2024