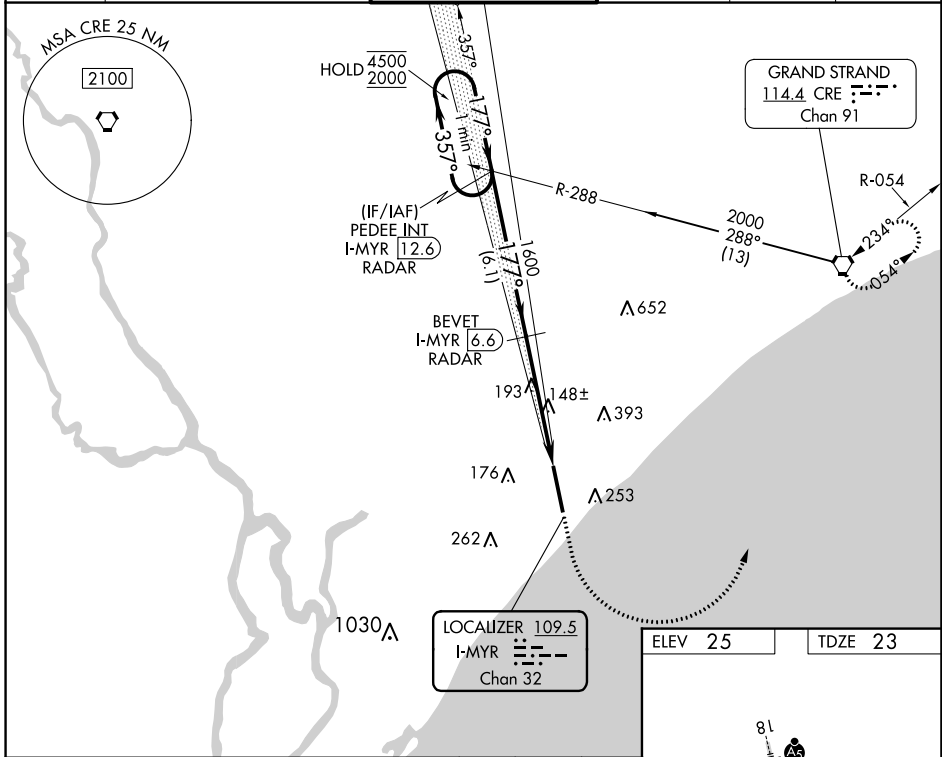


|  |                        |   |
|--|------------------------|---|
| LOC/DME I-MYR<br><b>109.5</b><br>Chan 32 | APP CRS<br><b>177°</b> | Rwy Idg <b>9503</b><br>TDZE <b>23</b><br>Apt Elev <b>25</b> |
|--|------------------------|---|

# ILS RWY 18 (SA CAT I & II)

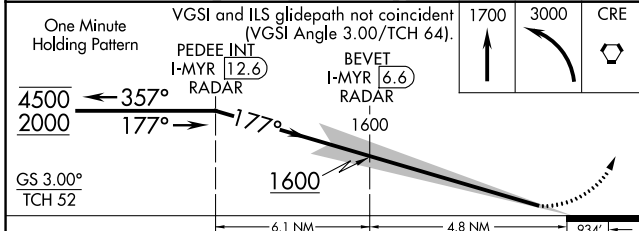
MYRTLE BEACH INTL (MYR)

|  |   |  |  |                          |                         |
|--|---|--|--|--------------------------|-------------------------|
| DME required.  |   | MALSR  | MISSED APPROACH: Climb to 1700 then climbing left turn to 3000 direct CRE VORTAC and hold. |                          |                         |
| SA CAT I/II: Requires specific OPSPEC, MSPEC, or LOA approval. |   |  |  |                          |                         |
| ATIS<br><b>123.925</b>   | MYRTLE BEACH APP CON *<br>(171° - 321°) <b>127.4 257.95</b><br>(322° - 170°) <b>119.2 350.3</b> | MYRTLE BEACH TOWER *<br><b>128.45 (CTAF) 259.3</b> | GND CON<br><b>120.3 275.8</b>  | CLNC DEL<br><b>120.3</b> | UNICOM<br><b>122.95</b> |

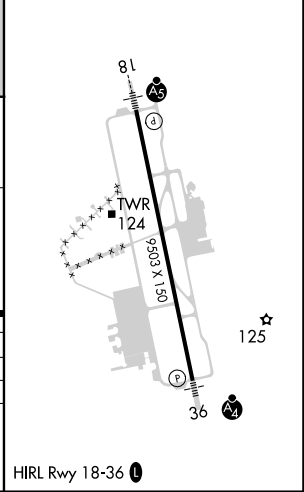


SE-2, 31 OCT 2024 to 28 NOV 2024

SE-2, 31 OCT 2024 to 28 NOV 2024



|         |         |
|---------|---------|
| ELEV 25 | TDZE 23 |
|---------|---------|



|          |   |                     |            |   |
|----------|---|---------------------|------------|---|
| CATEGORY | A | B                   | C          | D |
| S-ILS 18 |   | SA CAT I RA 156/14  | 150 DA 173 |   |
| S-ILS 18 |   | SA CAT II RA 101/12 | 100 DA 123 |   |

**SA CATEGORY I & II SPECIAL AIRCREW & AIRCRAFT CERTIFICATION REQUIRED**