

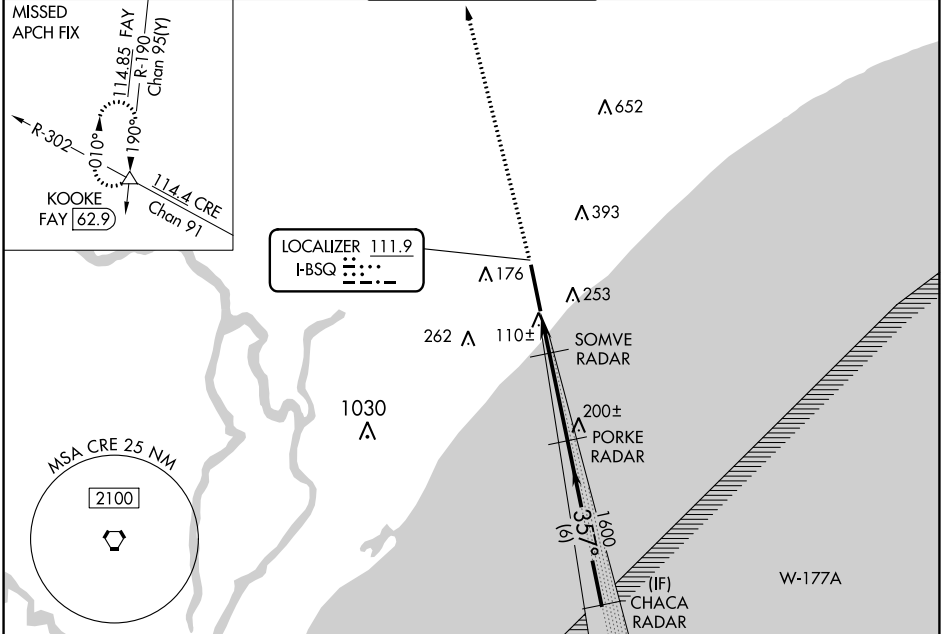
LOC I-BSQ 111.9	APP CRS 357°	Rwy Idg TDZE Apt Elev	9503 25 25
---------------------------	------------------------	-----------------------------	---------------------------------------

ILS or LOC RWY 36

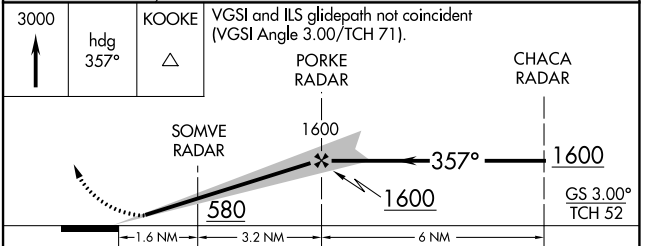
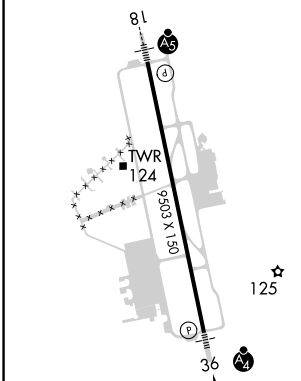
MYRTLE BEACH INTL (MYR)

RADAR required.		MALSF	MISSED APPROACH: Climb to 3000 on heading 357° expect RADAR vectors to KOOKE INT/FAY 62.9 DME and hold.		
For inop ALS increase S-LOC 36 Cats D/E visibility to RVR 5000.					

ATIS 123.925	MYRTLE BEACH APP CON ★ (171° - 321°) 127.4 257.95 (322° - 170°) 119.2 350.3	MYRTLE BEACH TOWER ★ 128.45 (CTAF) 259.3	GND CON 120.3 275.8	CLNC DEL 120.3	UNICOM 122.95
------------------------	---	--	-------------------------------	--------------------------	-------------------------



ELEV 25	TDZE 25
---------	---------



HIRL Rwy 18-36		FAF to MAP 4.8 NM				
Knots	60	90	120	150	180	
Min:Sec	4:48	3:12	2:24	1:55	1:36	
CIRCLING	560-1	535 (600-1)	700-2	700-2¼	700-2½	
			675 (700-2)	675 (700-2¼)	675 (700-2½)	

SE-2, 31 OCT 2024 to 28 NOV 2024

SE-2, 31 OCT 2024 to 28 NOV 2024