

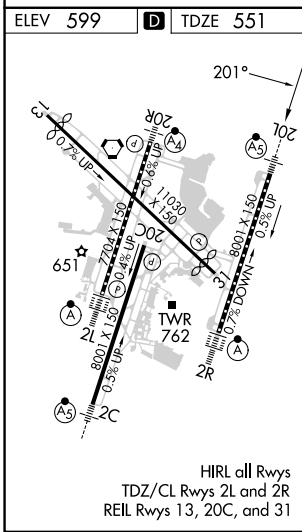
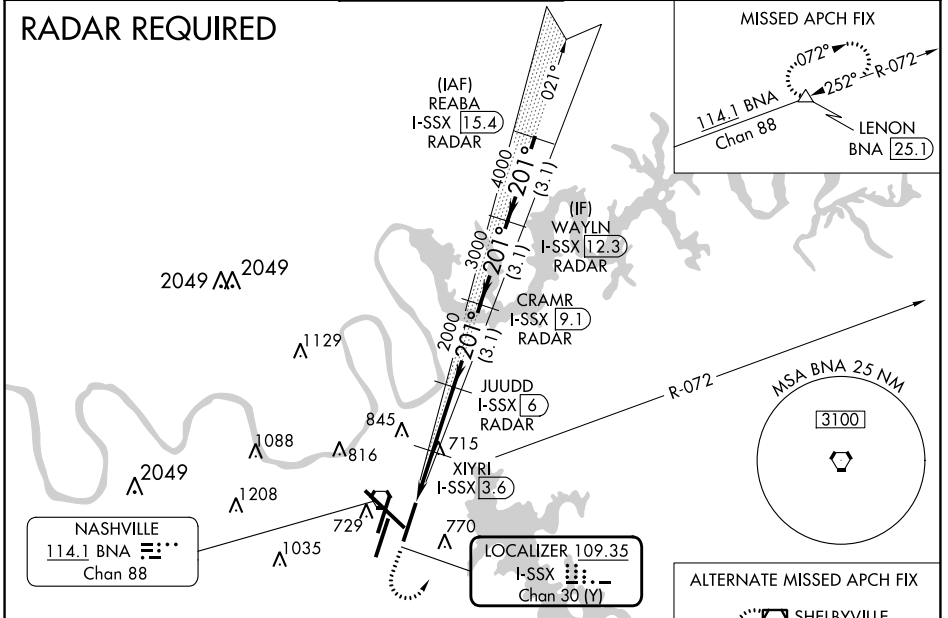
LOC/DME I-SSX <b>109.35</b> Chan 30 (Y)	APP CRS <b>201°</b>	Rwy Idg TDZE Apt Elev	<b>8000</b> <b>551</b> <b>599</b>
---	------------------------	-----------------------------	---

# ILS or LOC/DME RWY 20L

NASHVILLE INTL (BNA)

<b>▽</b> Simultaneous approach authorized with Rwy 20R. <b>▲</b> DME required. **RVR 1800 authorized with the use of FD or AP or HUD to DA.	<b>MALS</b> 		<b>MISSED APPROACH:</b> Climb to 1300 then climbing left turn to 3000 on heading 040° and BNA VORTAC R-072 to LENON/BNA 25.1 DME and hold.		
	D-ATIS <b>135.1</b>	NASHVILLE APP CON <b>118.4 360.7</b>	NASHVILLE TOWER <b>118.6 257.8</b>	GND CON <b>121.9 348.6</b>	CLNC DEL <b>126.05</b>

## RADAR REQUIRED



ELEV 599	<b>D</b>	TDZE 551				
1300 3000 BNA LENON R-072 △			WAYLN I-SSX 12.3 RADAR		REABA I-SSX 15.4 RADAR	
*LOC only.			XIYRI I-SSX 3.6 RADAR	CRAMR I-SSX 9.1 RADAR	JUUDD I-SSX 6 RADAR	
I-SSX 1.6 I-SSX 2.8			2000 3000 4000 5000		GS 3.00° TCH 55	
-1.2 -0.8 -2.4 NM -3.1 NM -3.1 NM -3.1 NM						
CATEGORY	A	B	C	D		
S-ILS 20L	** 751/24 200 (200-½)					
S-LOC 20L	980/24	429 (400-½)	980/40	429 (400-¾)		
<b>C</b> CIRCLING	1100-1 501 (600-1)	1120-1 521 (600-1)	1200-1¾ 601 (700-1¾)	1380-2½ 781 (800-2½)		

SE-1, 31 OCT 2024 to 28 NOV 2024

SE-1, 31 OCT 2024 to 28 NOV 2024