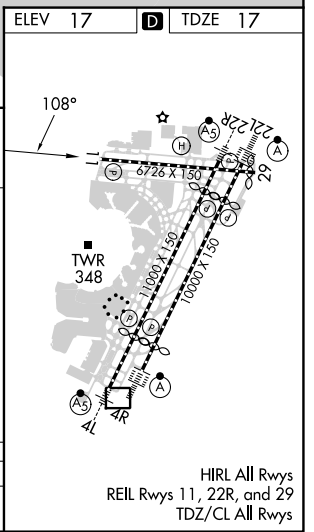
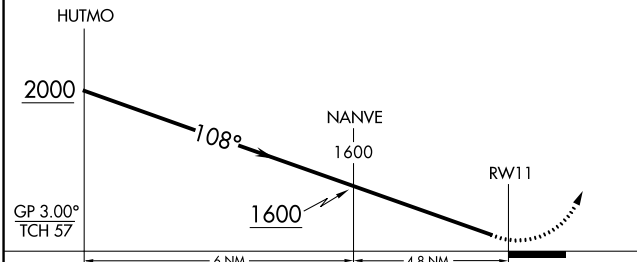
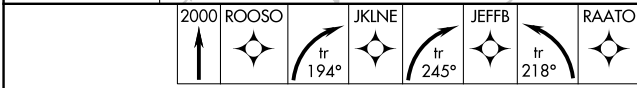
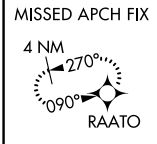
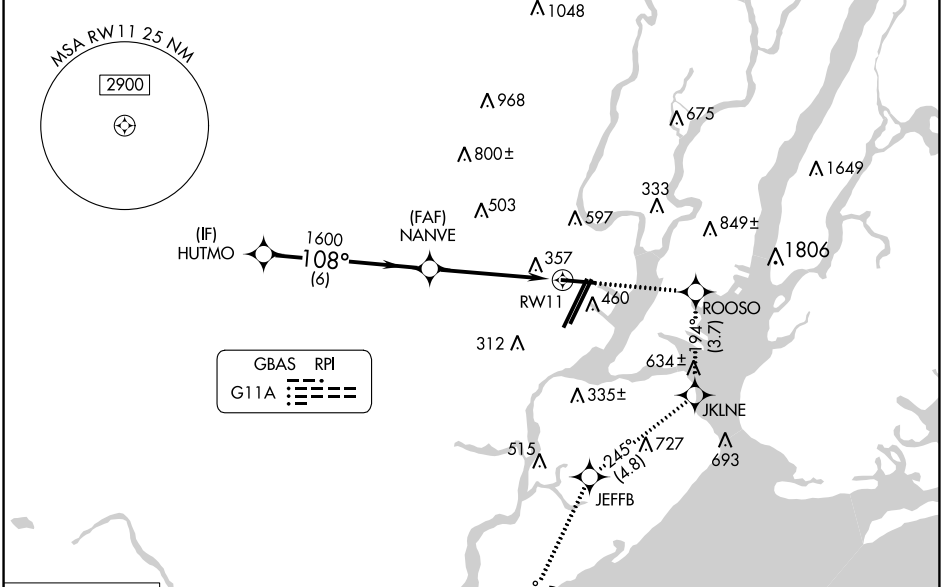


| | | | |
|-----------------|-------------|----------|-------------|
| GBAS | APP CRS | Rwy Idg | 6726 |
| CH 21905 | 108° | TDZE | 17 |
| G11A | | Apt Elev | 17 |

GLS RWY 11

NEWARK LIBERTY INTL (EWR)

| | | | | | |
|---|---------------------|---|--------------|---------------|-------|
| RNP APCH - GPS. | | MISSED APPROACH: (Do not exceed 230K until JKLNE) | | | |
| RADAR required. | | Climb to 2000 direct ROOSO and right turn on track 194° to JKLNE and right turn on track 245° to JEFFB and left turn on track 218° to RAATO and hold. | | | |
| Autopilot coupled approach NA below 312. Rwy 11 helicopter visibility reduction below RVR 4000 NA. | | | | | |
| D-ATIS | NEWARK APP CON | NEWARK TOWER | GND CON | CLNC DEL | CPDLC |
| 115.7 134.825 | 128.55 379.9 | 118.3 257.6 | 121.8 | 118.85 | |



| | | | | |
|----------|--------|---|--------------|---|
| CATEGORY | A | B | C | D |
| GLS DA | 312/45 | | 295 (300-7%) | |

NE-2, 31 OCT 2024 to 28 NOV 2024

NE-2, 31 OCT 2024 to 28 NOV 2024