

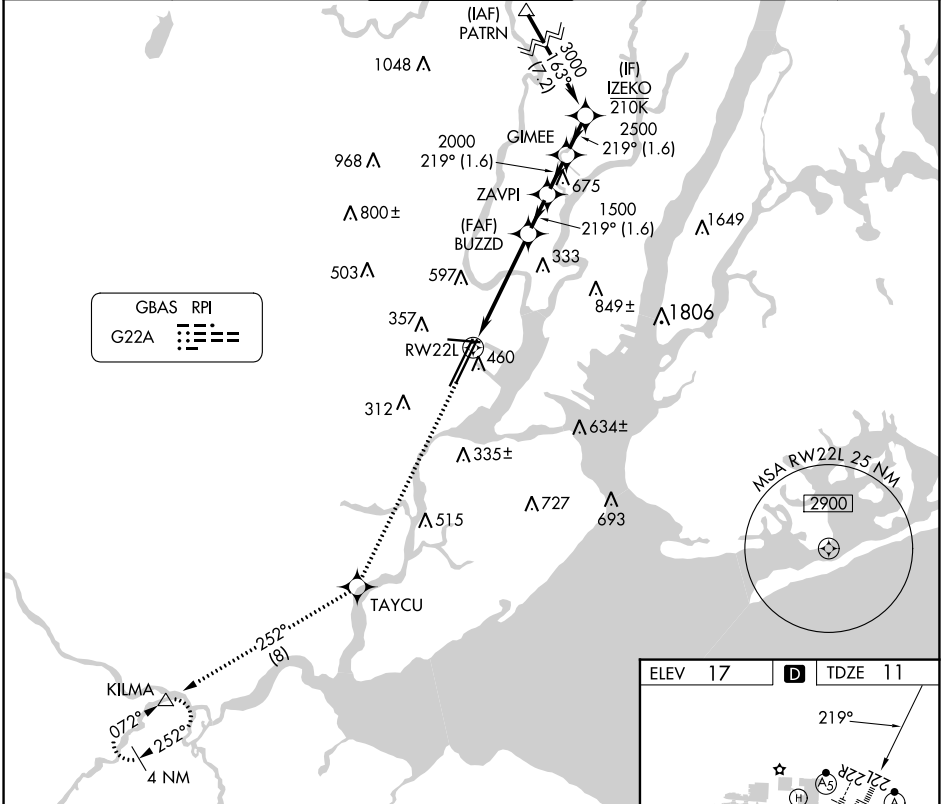
GBAS CH 21494 G22A	APP CRS 219°	Rwy Idg TDZE 11 Apt Elev 17	8207
--	------------------------	---	-------------

GLS RWY 22L

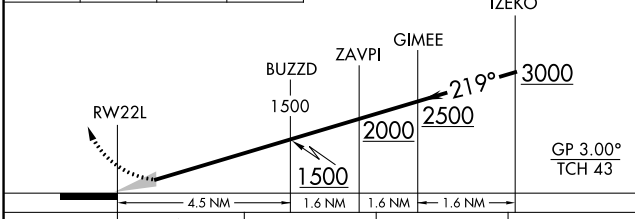
NEWARK LIBERTY INTL (EWR)

RNP APCH - GPS.	ALSIF-2	MISSED APPROACH: Climb to 3000 direct TAYCU and on track 252° to KILMA and hold.
NA Autopilot coupled approach NA below 211.	NA	

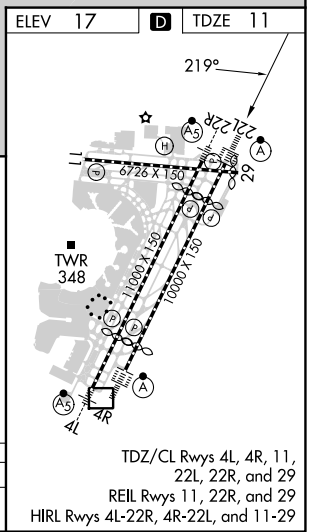
D-ATIS 115.7 134.825	NEWARK APP CON 128.55 379.9	NEWARK TOWER 118.3 257.6	GND CON 121.8	CLNC DEL 118.85	CPDLC
--------------------------------	---------------------------------------	------------------------------------	-------------------------	---------------------------	-------



3000	TAYCU	KILMA	VGSI and GLS glidepath not coincident (VGSI Angle 3.00/TCH 60).
↑	✦	lr 252°	△



CATEGORY	A	B	C	D
GLS DA	211/18 200 (200-1/2)			



NE-2, 31 OCT 2024 to 28 NOV 2024

NE-2, 31 OCT 2024 to 28 NOV 2024

GLS RWY 22L