

LOC/DME I-LSQ	APP CRS	Rwy Idg	22L 8207	22R 9560
<b>108.7</b>	<b>219°</b>	TDZE	11	10
Chan 24		Apt Elev	17	17

# ILS or LOC RWY 22L

NEWARK LIBERTY INTL (EWR)

RNP APCH - GPS.

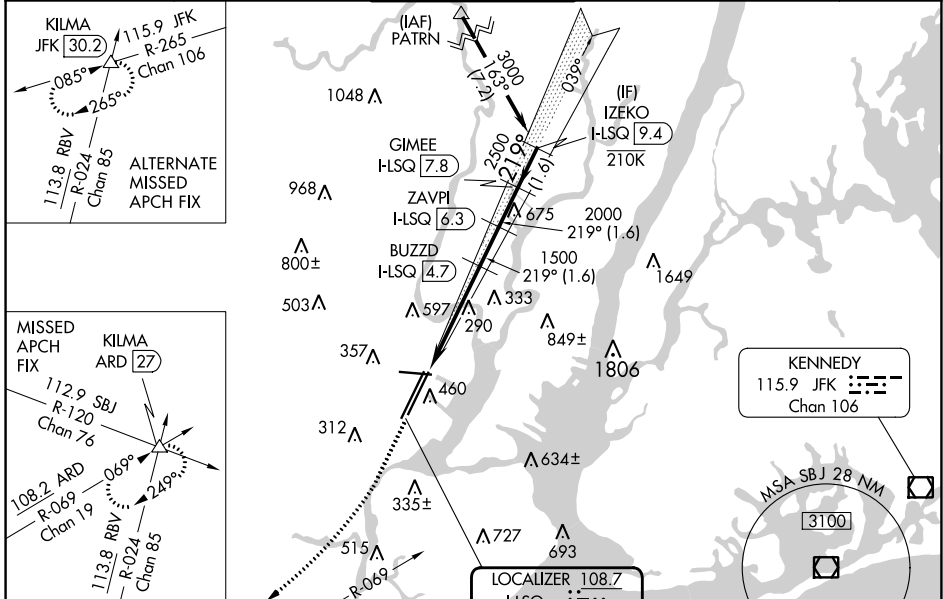
Aircraft not GPS equipped - RADAR required for procedure entry. DME required.

22L ALSF-2

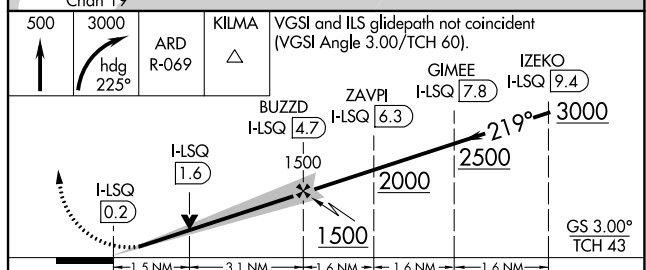
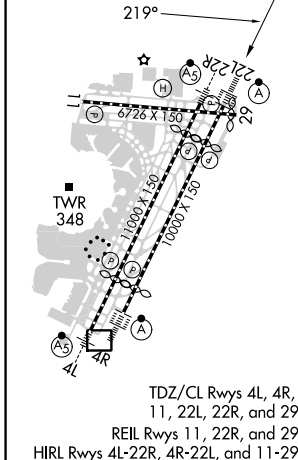
22R MALSR

MISSED APPROACH: Climb to 500 then climbing right turn to 3000 on heading 225° and ARD VOR/DME R-069 to KILMA INT/ARD 27 DME and hold.

D-ATIS	NEWARK APP CON	NEWARK TOWER	GND CON	CLNC DEL	CPDLC
<b>115.7 134.825</b>	<b>128.55 379.9</b>	<b>118.3 257.6</b>	<b>121.8</b>	<b>118.85</b>	



ELEV 17	<b>D</b>	TDZE 22L 11	TDZE 22R 10
---------	----------	-------------	-------------



CATEGORY	A	B	C	D
S-ILS 22L	211/18 200 (200-1/2)			
S-LOC 22L	540/24	529 (600-1/2)	540/55	529 (600-1)
SIDESTEP RWY 22R	540/55 530 (600-1)			540-1/2 530 (600-1/2)
CIRCLING	660-1	643 (700-1)	900-2 3/4 883 (900-2 3/4)	900-3 883 (900-3)

NE-2, 31 OCT 2024 to 28 NOV 2024

NE-2, 31 OCT 2024 to 28 NOV 2024