

NEWARK FIVE DEPARTURE
(EWRS, EWR) 30NOV23

NEWARK FIVE DEPARTURE
NEWARK LIBERTY INTL (EWR)

A1-285 (FAA)

NEWARK LIBERTY INTL (EWR)
NEWARK, NEW JERSEY

NEWARK DEP CON
119.2 379.9
D-ATIS
134.825
CLNC DEL 118.85
CPDLC
GND CON 121.8
NEWARK TOWER
118.3 257.6

SPARTA
115.7 SAX
Chan 104

HUGUENOT
116.1 HUO
Chan 108

KINGSTON
117.6 IGN
Chan 123

CARMEL
116.6 CMK
Chan 113

GREKI

MERIT

BAYYS

TETERBORO
108.4 TEB
Chan 21

BREZY

BRIDGEPORT
108.8 BDR
Chan 25

DEER PARK
117.7 DPK
Chan 124

LA GUARDIA
113.1 LGA
Chan 78

LOCALIZER 108.7
I-LSQ
Chan 24

KENNEDY
115.9 JFK
Chan 106

BROADWAY
114.2 BWZ
Chan 89

LOCALIZER 109.15
I-GPR
Chan 28 (Y)

LOCALIZER 110.75
I-EWR
Chan 44 (Y)

LOCALIZER 110.75
I-JNN
Chan 44 (Y)

LOCALIZER 108.7
I-EZA
Chan 24

SOLBERG
112.9 SBJ
Chan 76

NECK

EAST TEXAS
110.2 ETX
Chan 39

POTTSTOWN
116.5 PTW
Chan 112

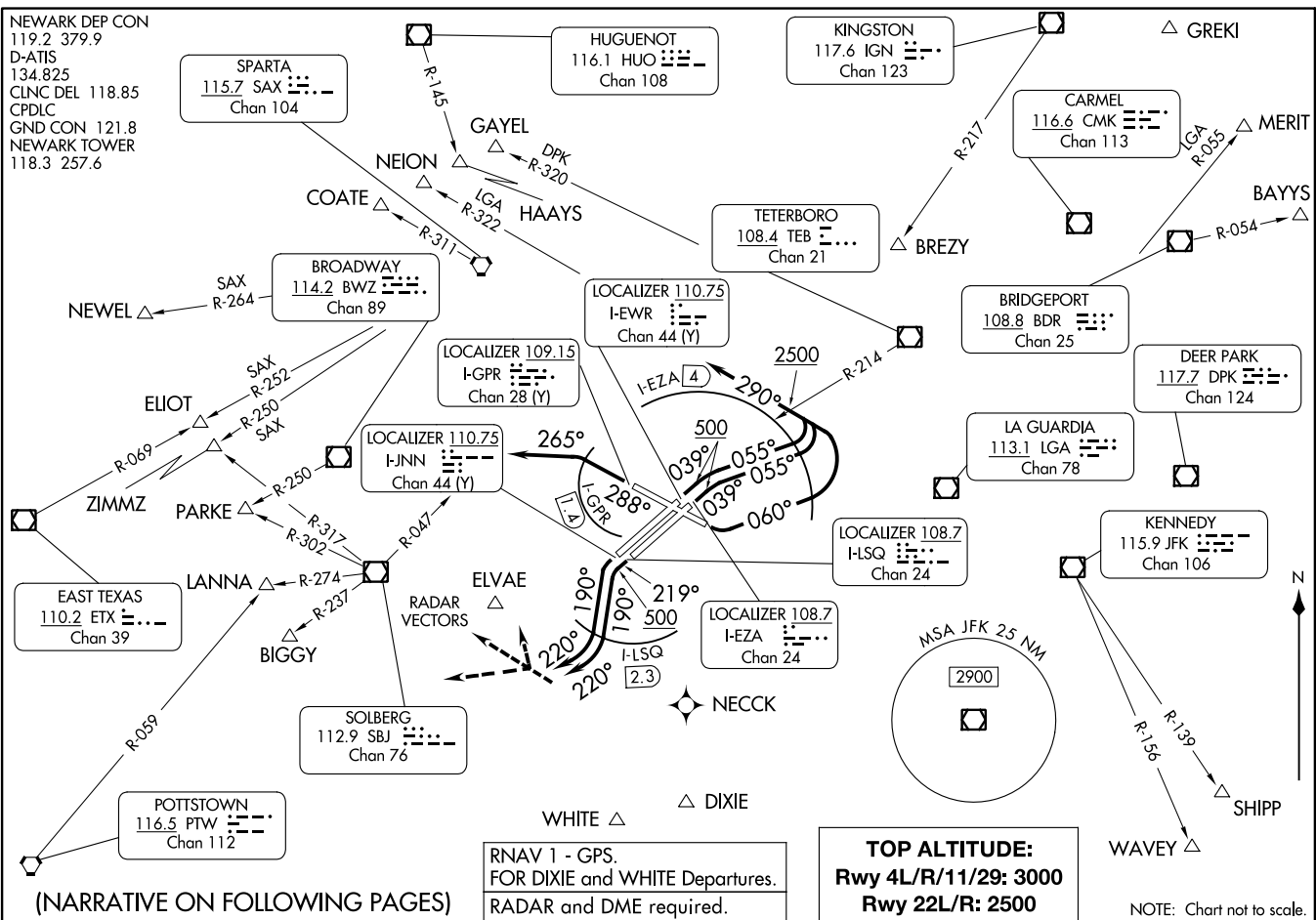
WHITE

DIXIE

RNAV 1 - GPS.
FOR DIXIE and WHITE Departures.
RADAR and DME required.

TOP ALTITUDE:
Rwy 4L/R/11/29: 3000
Rwy 22L/R: 2500

NOTE: Chart not to scale.



(NARRATIVE ON FOLLOWING PAGES)

NEWARK, NEW JERSEY
NEWARK LIBERTY INTL (EWR)



DEPARTURE ROUTE DESCRIPTION

TAKEOFF RUNWAY 4L/R: Climb on heading 039° to 500, then climbing right turn to heading 055° to I-EZA 4 DME (use I-EWR 3.6 DME when I-EZA is NA), then climbing left turn to heading 290°, cross TEB R-214 westbound at or above 2500, climb and maintain 3000, thence....

TAKEOFF RUNWAY 11: Climbing left turn on heading 060° to I-EZA 4 DME (use I-EWR 3.6 DME when I-EZA is NA), then climbing left turn to heading 290°, cross TEB R-214 westbound at or above 2500, climb and maintain 3000, thence....

TAKEOFF RUNWAY 22L: Climb on heading 219° to 500, then climbing left turn to heading 190° to I-LSQ 2.3 DME (use I-JNN 2.8 DME when I-LSQ is NA), then climbing right turn to heading 220°, maintain 2500, thence....

TAKEOFF RUNWAY 22R: Climbing left turn on heading 190° to I-LSQ 2.3 DME (use I-JNN 2.8 DME when I-LSQ is NA), then climbing right turn to heading 220°, maintain 2500, thence....

TAKEOFF RUNWAY 29: Climb on heading 288° to I-GPR 1.4 DME, then climbing left turn to heading 265°, maintain 3000, thence....

....as per notes or for RADAR vectors to assigned route/fix. Expect clearance to filed altitude/flight level ten (10) minutes after departure.

All Aircraft: ATC climb gradients: If unable to accept climb rates advise ATC prior to taxi.
Rwy 4L/R/11: ATC climb of 500'/NM to 2500.
Rwy 22L: ATC climb of 500'/NM to 600.
Rwy 22R/29: ATC climb of 500'/NM to 500.

LOST COMMUNICATIONS: For aircraft proceeding to COATE, NEION, HAAYS, GAYEL, or BREZY, if radio contact lost/not established with ATC, climb to 3000 after SBJ R-047.

(NOTES CONTINUED ON FOLLOWING PAGE)

(NOTES CONTINUED)

NOTE: Rwy 4L/R, 11 simultaneous reception of EWR ILS/DME required.

NOTE: Rwy 22L/R westbound departures expect RADAR vectors between 5 and 8 NM.

	Depart Rwy 4L/R	Depart Rwy 22L/R
	<u>Expect RADAR VECTORS to:</u>	<u>Expect RADAR VECTORS to:</u>
<u>DP FIX</u>		
BAYYS	BDR/BDR R-054	BDR/BDR R-054
BIGGY	SBJ /SBJ R-237	SBJ /SBJ R-237
BREZY	IGN R-217 to BREZY	IGN R-217 to BREZY
COATE	SAX/SAX R-311	SAX/SAX R-311
DIXIE	ELVAE/NECCK	ELVAE/NECCK
ELIOT	SAX R-252	ETX (2300L-0700L SBJ/ETX)
GAYEL	DPK R-320	DPK R-320
HAAYS	HUO	HUO
LANNA	PTW R-059	SBJ /SBJ R-274
MERIT	LGA R-055	LGA R-055
NEION	LGA R-322	LGA R-322
NEWEL	SAX/SAX R-264	SAX/SAX R-264
PARKE	BWZ R-250	SBJ /SBJ R-302
SHIPP	JFK/JFK R-139	JFK/JFK R-139
WAVEY	JFK/JFK R-156	JFK/JFK R-156
WHITE	ELVAE/NECCK	ELVAE/NECCK
ZIMMZ	SAX R-250	SBJ /SBJ R-317

NOTE: ELIOT may be accessed by all types of aircraft requesting a final altitude of 14000 or 16000.

NOTE: NEWEL may be accessed by turbo jet aircraft only requesting a final altitude at or above FL180.

NOTE: ZIMMZ may be accessed by all types of aircraft requesting a final altitude at or above FL180.

TAKEOFF MINIMUMS:

- Rwy 4L: Standard with minimum climb of 365'/NM to 800.
- Rwy 4R: Standard with minimum climb of 345'/NM to 900.
- Rwy 11: Standard with minimum climb of 250'/NM to 2000.
- Rwy 22L: Standard with minimum climb of 450'/NM to 700.
- Rwy 22R: Standard with minimum climb of 225'/NM to 500.
- Rwy 29: Standard with minimum climb of 455'/NM to 500.

NE-2, 31 OCT 2024 to 28 NOV 2024

NE-2, 31 OCT 2024 to 28 NOV 2024