

RNAV (GPS) W RWY 29

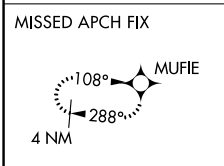
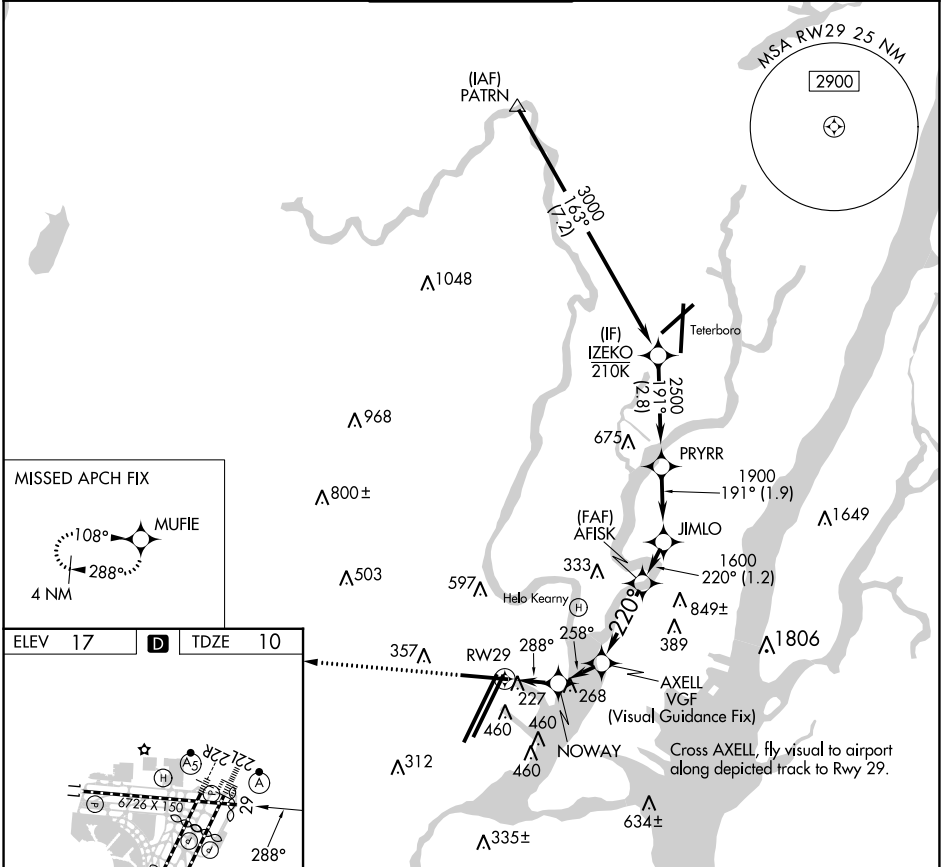
NEWARK LIBERTY INTL (EWR)

APP CRS	Rwy Idg	6502
288°	TDZE	10
	Apt Elev	17

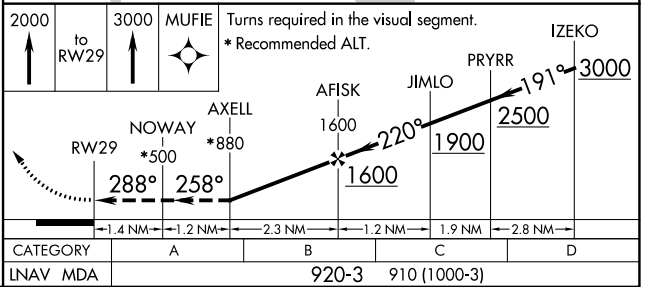
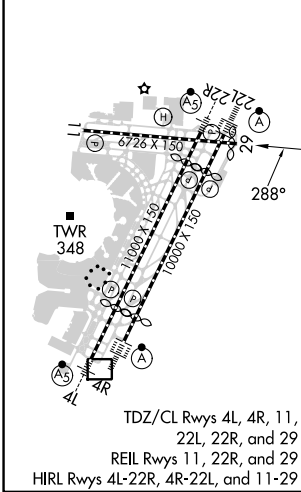
RNP APCH - GPS.
 RADAR required.
 ▼ Rwy 29 helicopter visibility reduction below 1 SM NA. Straight-in Rwy 29 at night,
 ▲ operational VGSI required, remain at or above VGSI glidepath until threshold.

MISSED APPROACH: (Do not exceed 165K until Rwy 29) Climb to 2000 on the extended visual approach track to Rwy 29, then climb to 3000 direct MUFIE and hold.

D-ATIS	NEWARK APP CON	NEWARK TOWER	GND CON	CLNC DEL	CPDLC
115.7 134.825	128.55 379.9	118.3 257.6	121.8	118.85	



ELEV 17	D	TDZE 10
---------	----------	---------



RNAV (GPS) W RWY 29

NE-2, 31 OCT 2024 to 28 NOV 2024

NE-2, 31 OCT 2024 to 28 NOV 2024