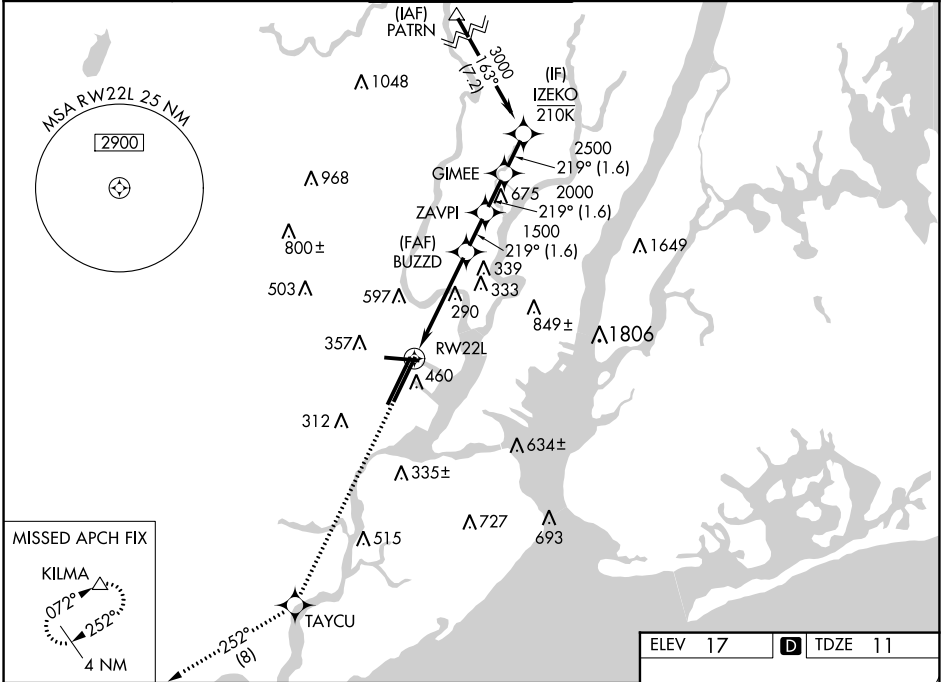


WAAS CH <b>70324</b> <b>W22A</b>	APP CRS <b>219°</b>	Rwy Idg <b>8207</b> TDZE <b>11</b> Apt Elev <b>17</b>
--	------------------------	---

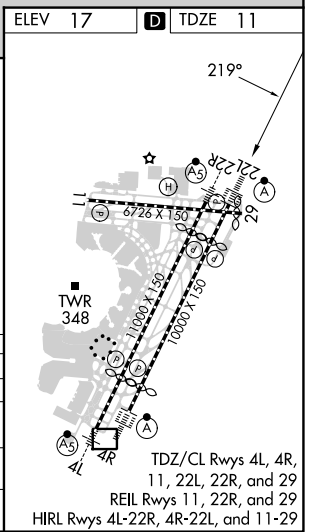
# RNAV (GPS) Z RWY 22L

NEWARK LIBERTY INTL (EWR)

RNP APCH - GPS.		NEWARK TOWER <b>118.3 257.6</b>		GND CON <b>121.8</b>	CLNC DEL <b>118.85</b>	CPDLC
<p><b>⚠</b> Circling NA south of Rwy 11-29. For uncompensated Baro-VNAV systems, LNAV/VNAV NA below -12°C or above 54°C. When Circling to Rwy 29 at night, operational VGSI required, remain on or above VGSI glidepath until threshold.</p>		<p>ALSF-2 <b>(A)</b></p>		<p>MISSED APPROACH: Climb to 3000 direct TAYCU and on track 252° to KILMA and hold.</p>		



3000	TAYCU	tr 252°	KILMA	VGSI and RNAV glidepath not coincident (VGSI Angle 3.00/TCH 60).	
↑	✦		△		
				IZEKO	
				GIMEE	3000
				ZAVPI	2500
				BUZZD	2000
				RW22L	1500
					GP 3.00° TCH 43
				1.5 NM	3 NM
				1.6 NM	1.6 NM
				1.6 NM	1.6 NM
CATEGORY	A	B	C	D	
LPV DA		211/18	200 (200-½)		
LNAV/VNAV DA		462/45	451 (500-¾)		
LNAV MDA	560/24	549 (600-½)	560/60	549 (600-1¼)	
<b>C</b> CIRCLING	660-1	643 (700-1)	900-2¾ 883 (900-2¾)	900-3 883 (900-3)	



NE-2, 31 OCT 2024 to 28 NOV 2024

NE-2, 31 OCT 2024 to 28 NOV 2024

# RNAV (GPS) Z RWY 22L