

SHAFF SEVEN ARRIVAL
(SHAFF:SHAFF7) 31MAY12

(SHAFF:SHAFF7) 24249
SHAFF SEVEN ARRIVAL

BOSTON CENTER
126.47 388.8
134.3 256.9
NEWARK APP CON
121.15 379.9
ATIS
115.7 134.825

ROCHESTER
110.0 ROC
Chan 37

SYRACUSE
117.0 SYR
Chan 117

ROCKDALE
112.6 RKA
Chan 73

ALBANY
115.3 ALB
Chan 100

BARNES
113.0 BAF
Chan 77

Expect to cross
10 NM east
16000.

PAWLING
114.3 PWL
Chan 90

GENESEEO
108.2 GEE
Chan 19

HANCOCK
116.8 HNK
Chan 115

Expect to cross at
or below lowest
usable flight level.

HUGUENOT
116.1 HUU
Chan 108

KINGSTON
117.6 IGN
Chan 123

SPARTA
115.7 SAX
Chan 104

- NOTE: Radar required.
- NOTE: STAR applicable to turbojet and non-turbojet aircraft capable of 250K.
- NOTE: North Atlantic arrivals via BOS file BAF transition. Domestic arrivals from the east file IGN Transition.
- NOTE: Expect to cross 10 NM east of BAF at or below 16000.
- NOTE: Expect to cross HNK at or below lowest useable flight level.

NOTE: USE CAUTION:
Parachute operations
4 NM radius of 5NY5
at or below 14500 MSL.

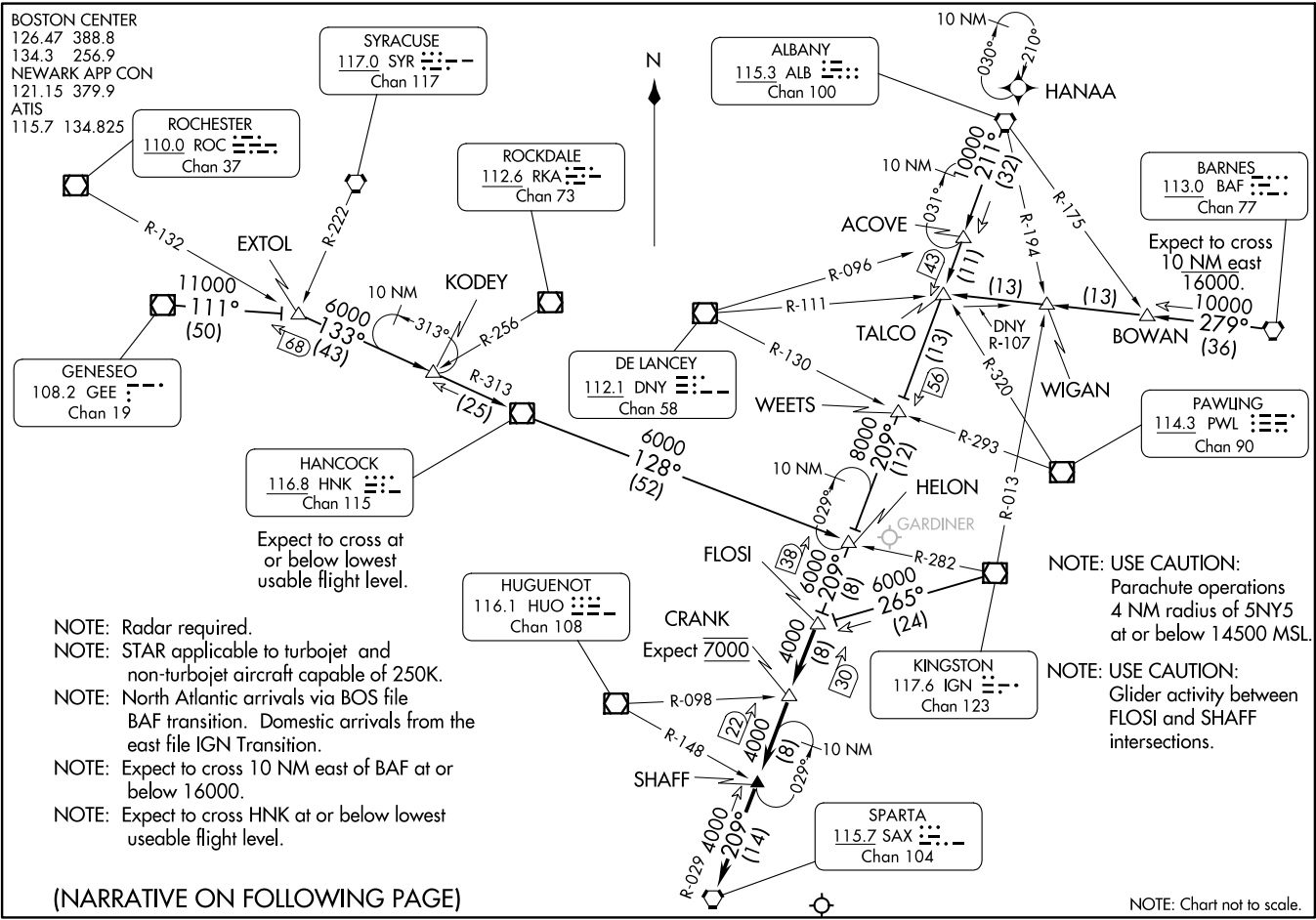
NOTE: USE CAUTION:
Glider activity between
FLOSI and SHAFF
intersections.

(NARRATIVE ON FOLLOWING PAGE)

NOTE: Chart not to scale.

NEWARK LIBERTY INTL (E/W/R)
NEWARK LIBERTY INTL (E/W/R)

NEWARK LIBERTY INTL (E/W/R)
NEWARK, NEW JERSEY



ARRIVAL ROUTE DESCRIPTION

ALBANY TRANSITION (ALB.SHAFF7): From over ALB VORTAC on ALB R-211 to WEETS INT, then on SAX R-029 to FLOSI INT. Thence. . . .

BARNES TRANSITION (BAF.SHAFF7): From over BAF VORTAC on BAF R-279 to TALCO INT, then on ALB R-211 to WEETS INT, then on SAX R-029 to FLOSI INT. Thence. . . .

GENESEO TRANSITION (GEE.SHAFF7): From over GEE VOR/DME on GEE R-111 to EXTOL INT, then on HNK R-313 to HNK VOR/DME, then on HNK R-128 to HELON INT, then on SAX R-029 to FLOSI INT. Thence. . . .

HANCOCK TRANSITION (HNK.SHAFF7): From over HNK VOR/DME on HNK R-128 to HELON INT, then on SAX R-029 to FLOSI INT. Thence. . . .

KINGSTON TRANSITION (IGN.SHAFF7): From over IGN VOR/DME on IGN R-265 to FLOSI INT. Thence. . . .

. . . . From over FLOSI INT on SAX R-029 to CRANK INT, then to SHAFF INT, then to SAX VORTAC. Expect radar vectors to final approach course.

NE-2, 31 OCT 2024 to 28 NOV 2024

NE-2, 31 OCT 2024 to 28 NOV 2024