

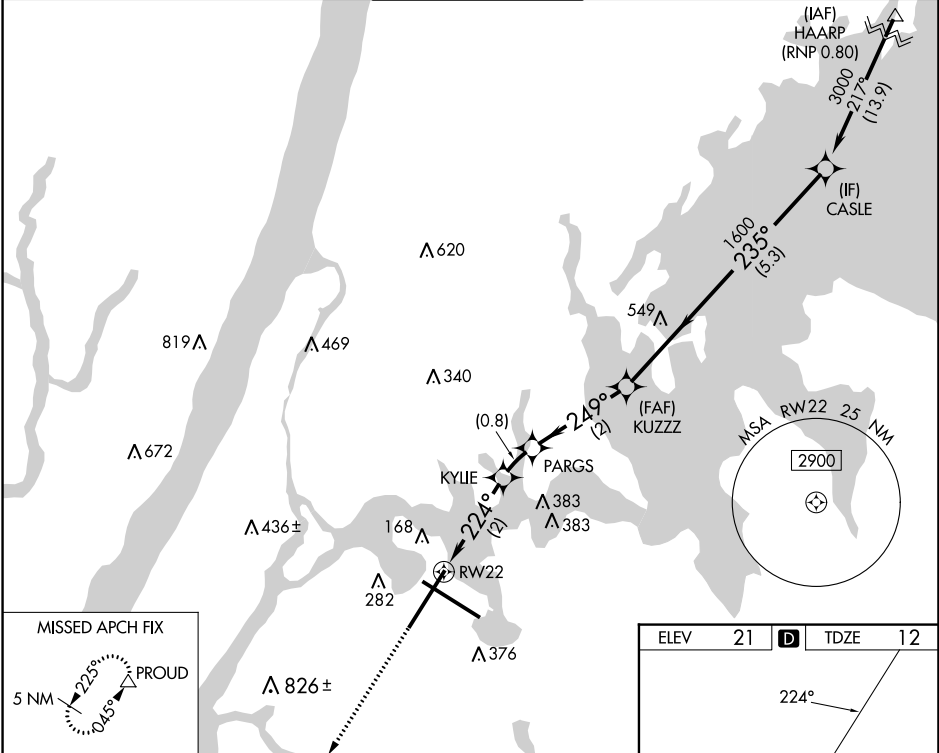
APP CRS	Rwy Idg	<b>7002</b>
<b>224°</b>	TDZE	<b>12</b>
	Apt Elev	<b>21</b>

# RNAV (RNP) Z RWY 22

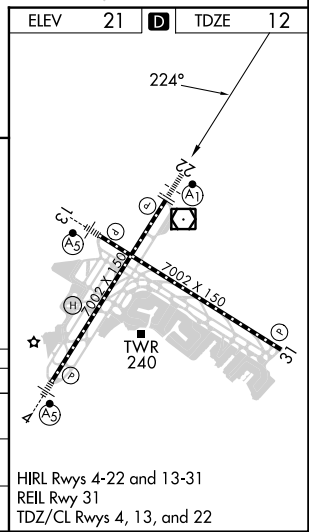
LAGUARDIA (LGA)

RNP AR APCH - GPS. RF required.		ALSF-1 	MISSED APPROACH: Climb to 3000 direct PROUD and hold, continue climb-in-hold to 3000. *Missed approach requires minimum climb of 397 feet per NM to 560.		
NA For uncompensated Baro-VNAV systems, procedure NA below -11°C or above 54°C. For inop ALS, increase RNP 0.30 DA* visibility to RVR 5500.					

D-ATIS ARR	<b>125.95</b>	NEW YORK APP CON	<b>120.8 263.0</b>	LAGUARDIA TOWER	<b>118.7 263.0</b>	GND CON	<b>121.7 263.0</b>	CLNC DEL	<b>135.2</b>	CPDLC
D-ATIS DEP	<b>127.05</b>									



3000 PROUD 	VGSi and RNAV glidepath not coincident (VGSi Angle 3.00/TCH 67).			
	KUZZ	CASLE		
	KYLIE 704 224° 2 NM	PARGS 947 249° 0.8 NM	1600 235° 2 NM	3000 1600 GP 3.00° TCH 52 5.3 NM
CATEGORY	A	B	C	D
RNP 0.30 DA*	384/35		372 (400-3%)	
RNP 0.30 DA	445/40		433 (500-3%)	



**AUTHORIZATION REQUIRED**

NE-2, 31 OCT 2024 to 28 NOV 2024

NE-2, 31 OCT 2024 to 28 NOV 2024